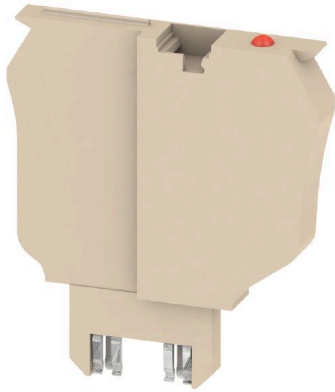


SIHA 1/G20 10-36V

Weidmüller Interface GmbH & Co. KG
Klingenbergstraße 26
D-32758 Detmold
Germany

www.weidmueller.com



The fuse holder SIHA quickly turns a disconnect terminal into a fuse terminal: simply remove the disconnect lever and attach the fuse unit.

General ordering data

Version	Fuse holder for feed-through modular terminal, dark beige, 2.31 A, pluggable, V-0, Wemid
Order No.	9537560000
Type	SIHA 1/G20 10-36V
GTIN (EAN)	4008190125066
Qty.	25 items

SIHA 1/G20 10-36V

Weidmüller Interface GmbH & Co. KG
 Klingenbergstraße 26
 D-32758 Detmold
 Germany

www.weidmueller.com

Technical data

Approvals

ROHS	Conform
------	---------

Dimensions and weights

Depth	43.93 mm	Depth (inches)	1.7295 inch
Height	33.38 mm	Height (inches)	1.3142 inch
Width	5.95 mm	Width (inches)	0.2343 inch
Net weight	8.32 g		

Temperatures

Ambient temperature	-5 °C...40 °C	Operating temperature	-50 °C... 120 °C
Continuous operating temp., min.	-50 °C	Continuous operating temp., max.	120 °C

Environmental Product Compliance

RoHS Compliance Status	Compliant with exemption
RoHS Exemption (if applicable/known)	7cl
REACH SVHC	No SVHC above 0.1 wt%

Material data

Basic material	Wemid	Insulating material	Wemid
Colour	dark beige	UL 94 flammability rating	V-0

System specifications

Version	Fuse cartridge	End cover plate required	No
---------	----------------	--------------------------	----

Additional technical data

Installation advice	Direct mounting	Type of mounting	Plugged
---------------------	-----------------	------------------	---------

Conductors for clamping (rated connection)

Type of connection	Plug-in connection
--------------------	--------------------

General

Installation advice	Direct mounting	Operating temperature range, max.	120 °C
---------------------	-----------------	-----------------------------------	--------

Rating data

Rated voltage	250 V	Nominal current	6.3 A
Rated impulse withstand voltage	4 kV	Pollution severity	3

Classifications

ETIM 6.0	EC002848	ETIM 7.0	EC002848
ETIM 8.0	EC002848	ETIM 9.0	EC002848
ETIM 10.0	EC002848	ECLASS 9.0	27-14-11-92
ECLASS 9.1	27-14-11-92	ECLASS 10.0	27-14-11-92
ECLASS 11.0	27-14-11-92	ECLASS 12.0	27-14-11-92
ECLASS 13.0	27-25-03-90	ECLASS 14.0	27-25-03-90
ECLASS 15.0	27-25-03-90		

Drawings

