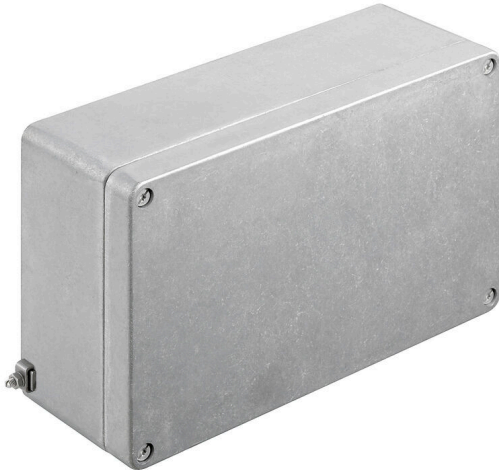


KLIPPON K61 EX

Weidmüller Interface GmbH & Co. KG

Klingenbergstraße 26
D-32758 Detmold
Germany

www.weidmueller.com



The aluminium Klippon® K enclosures are suitable for use in an extremely wide range of different areas. Various components can be installed inside the enclosures, and will benefit in particular from the high temperature resistance, the excellent IP protection and the good impact resistance.

No matter what kind of application the customer is planning, Weidmüller is able to provide a wide range of aluminium enclosures precisely fitting the customer's requirements.

Klippon® K enclosures for hazardous areas are available on request.

Our extensive product range offers the following advantages:

- Available in two surface finishes: natural and powder-coated (RAL 7001)
 - With chloroprene moulded seal as standard (silicone moulded seal optionally available)
 - Standardised closure system with Torx slotted screw head for 19 enclosure sizes
 - Mounting holes outside of the gasket area
 - High IP protection classes: IP66, IP67 and IP68 according to DIN EN 60529
 - Impact resistance of up to 7 (10) Joules
 - The enclosures are approved according to ATEX, IECEx, cULus, and DNV GL as well as the empty enclosure standard.
- Suitable for railway applications according to EN 45545-2:2013
 - Alloy is resistant to salt water
 - Standardised distributor enclosures with threaded holes and a variety of terminal configurations

General ordering data

Version	Klippon K (aluminium empty enclosure), Empty enclosure, Aluminium enclosure, Height: 160 mm, Width: 260 mm, Depth: 91 mm, Basic material: Aluminium AlSi12, untreated, silver
Order No.	9526970000
Type	KLIPPON K61 EX
GTIN (EAN)	4008190974824
Qty.	1 items

KLIPPON K61 EX

Weidmüller Interface GmbH & Co. KG
 Klingenbergstraße 26
 D-32758 Detmold
 Germany

www.weidmueller.com

Technical data

Approvals

Approvals



ROHS Conform

Dimensions and weights

Depth	91 mm	Depth (inches)	3.5827 inch
Height	160 mm	Height (inches)	6.2992 inch
Width	260 mm	Width (inches)	10.2362 inch
Mounting dimension - height	110 mm	Mounting dimension - width	240 mm
Net weight	1918.4 g		

Temperatures

Operating temperature -60 °C...135 °C

Environmental Product Compliance

RoHS Compliance Status Compliant without exemption
 REACH SVHC No SVHC above 0.1 wt%

Cable glands, left

M12	8	M16	6
M32	1	M25	2
M20	3	M40	1

Cable glands, right

M25	2	M16	6
M40	1	M32	1
M20	3	M12	8

Cable glands, top/bottom

M20	13	M12	27
M40	3	M32	4
M25	8	M16	23

Certificate numbers enclosure

Declaration of Conformity No. (DoC LVD)	DE PS2410 160412 001ISS03	Attestation of Conformity No. (AoC)	DE PS2410 160308 001ISS03
Certificate no. empty enclosure (INMETRO)	LMP 23.0526U	Certificate No. (DNV)	TAE00002SM
Certificate no. Terminal Box (ATEX)	IBExU12ATEX1145 X	Certificate no. empty enclosure (ATEX)	IBExU12ATEX1144 U
Certificate no. Terminal Box (INMETRO)	LMP 23.0527X	Certificate no. Terminal Box (IECEX)	IECEX IBE 13.0002X
Certificate no. empty enclosure (IECEX)	IECEX IBE 13.0001U	Certificate No. (IECEX)	IECEXIBE13.0001U
Certificate No. (ATEX)	IBEXU12ATEX1144U	Approval conditions	DNV, GL, RMRS, ATEX, IECEX, UL AEx Class Div., CCC, INMETRO

KLIPPON K61 EX

Weidmüller Interface GmbH & Co. KG

Klingenbergstraße 26
D-32758 Detmold
Germany

www.weidmueller.com

Technical data

General information

Material thickness of cover	4 mm	Material thickness of enclosure	4.5 mm
Operating temperature, max.	135 °C	Operating temperature, min.	-60 °C
Lid attachment	M6 torx stainless steel screws with slot	Standards	IEC 60079-0, IEC 60079-7, IEC 60079-31, EN 45545-2:2013
Surface finish	untreated	Impact resistance	7 J ATEX version
Protection degree	IP66, IP67	Basic material	Aluminium AISi12
Seal material	Silicone	Torque for lid screws	2.5 Nm
Integral fixing	Threaded holes M5	Enclosure attachment	Holes 6 mm
Number of lid screws	4	Access opening: width	251 mm
Flange plate	No	Lid	Yes
Access opening: height	151 mm	Areas of use	Explosive risk zone, Process industry, Transportation, Packaging industry, Marine engineering, Machine construction, Harbour facilities

horizontal assembly

WDU 10 / ZDU 10	1x20	WDU 16 / ZDU 16	1x16
WDU 2,5 / ZDU 2,5 / IDU 2,5	1x39	WDU 4 / ZDU 4	1x33
WDU 6 / ZDU 6	1x24		

vertical assembly

WDU 2,5 / ZDU 2,5 / IDU 2,5	*	WDU 4 / ZDU 4	*
-----------------------------	---	---------------	---

Classifications

ETIM 8.0	EC002503	ETIM 9.0	EC002503
ETIM 10.0	EC002503	ECLASS 14.0	27-18-05-02
ECLASS 15.0	27-18-05-02		

KLIPPON K61 EX

Weidmüller Interface GmbH & Co. KG
Klingenbergstraße 26
D-32758 Detmold
Germany

Drawings

www.weidmueller.com

Dimensioned drawing



KLIPPON K61 EX

Weidmüller Interface GmbH & Co. KG

Klingenbergstraße 26
D-32758 Detmold
Germany

www.weidmueller.com

Accessories

Klippon® K - Hinge



The system accessories for the Klippon® K enclosure series allows you to easily adapt the enclosures to meet the specific requirements of every application.

- DIN Rails TS 35 and TS 15
- Mounting plates
- Hinges
- Wall-mounted holder

Weidmüller can manufacture and supply this enclosure - according to customer specifications - fitted with all necessary terminals and cable glands.

General ordering data

Type	HG K+POK	Version	
Order No.	1580360000	Klippon POK (polyester empty enclosure), External joint, Hinge, Basic	
GTIN (EAN)	4008190203542	material: Aluminium AISi12, silver	
Qty.	1 ST		

Klippon® K - Mounting plates



The system accessories for the Klippon® K enclosure series allows you to easily adapt the enclosures to meet the specific requirements of every application.

- DIN Rails TS 35 and TS 15
- Mounting plates
- Hinges
- Wall-mounted holder

Weidmüller can manufacture and supply this enclosure - according to customer specifications - fitted with all necessary terminals and cable glands.

General ordering data

Type	MOPL K61 STAHL	Version	
Order No.	3073120000	Klippon K (aluminium empty enclosure), Mounting plate, Mounting	
GTIN (EAN)	4008190858056	plate, Height: 145 mm, Width: 245 mm, Depth: 2 mm, Basic material:	
Qty.	1 ST	Sheet steel, galvanized, galvanized, silver	

Depth 7.5 mm



The system accessories for the Klippon® K enclosure series allows you to easily adapt the enclosures to meet the specific requirements of every application.

- DIN Rails TS 35 and TS 15
- Mounting plates
- Hinges
- Wall-mounted holder

Weidmüller can manufacture and supply this enclosure - according to customer specifications - fitted with all necessary terminals and cable glands.

General ordering data

Type	TS35/243 KLIPPON K61POK6	Version	
Order No.	1910120000	Rail, TS 35, TS 35 x 7.5, Width: 239 mm, without slot, Steel,	
GTIN (EAN)	4032248537037	galvanized, chromium-plated	
Qty.	1 ST		

KLIPPON K61 EX

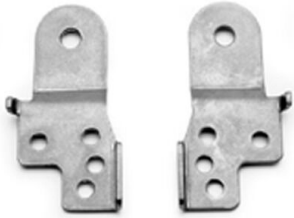
Weidmüller Interface GmbH & Co. KG

Klingenbergstraße 26
D-32758 Detmold
Germany

www.weidmueller.com

Accessories

Klippon® K - Wall-mounted holder



The system accessories for the Klippon® K enclosure series allows you to easily adapt the enclosures to meet the specific requirements of every application.

- DIN Rails TS 35 and TS 15
- Mounting plates
- Hinges
- Wall-mounted holder

Weidmüller can manufacture and supply this enclosure - according to customer specifications - fitted with all necessary terminals and cable glands.

General ordering data

Type	KLIPPON K MF KIT 25	Version	
Order No.	9527590000	Klippon K (aluminium empty enclosure), Mounting foot, Fixing lugs,	
GTIN (EAN)	4032248014071	Height: 70 mm, Width: 33.5 mm, Depth: 12 mm, Basic material:	
Qty.	1 ST	Stainless steel 1.4301, silver	

Installation material



Integrate, expand and customise - the perfect supplement to every application

The fully structured range of system accessories for the new Klippon® TB enclosure series allows you to easily adapt the enclosures to meet the specific requirements of every application.

Mounting hardware kits

Mounting hardware kits are available for quick and easy installation of type label holders, document holders and rain hoods.

The label fastening set – SD is required to install a plastic (Trafolyte) ID or type label. With the aid of this set can you mount the ID or type label directly on the enclosure cover. The label fastening set has been specially developed for this purpose. Only by using this fastening set can you ensure that there will be no leaks into the enclosure or damage to the label.

The universal fastening set – TPSD has been developed to enable secure and quick installation of type label holders, rain covers or document holders, for example. By using this fastening set, the risk of leaks can be minimised, if not avoided.

General ordering data

Type	TPSD FIXING SET KTB	Version	
Order No.	1252190000	Klippon TB (Terminal Box), Type plate fixings set, Basic material:	
GTIN (EAN)	4050118043969	Stainless steel, rust-proof, untreated, silver	
Qty.	20 ST		
Type	SD FIXING SET	Version	
Order No.	1285200000	Klippon TB (Terminal Box), Identification plate fixing set, Height: 12	
GTIN (EAN)	4050118075472	mm, Width: 12 mm, Depth: 16.4 mm, Basic material: Stainless steel,	
Qty.	1 ST	rust-proof, untreated, silver	

KLIPPON K61 EX

Weidmüller Interface GmbH & Co. KG
 Klingenbergstraße 26
 D-32758 Detmold
 Germany

www.weidmueller.com

Accessories

Mounting support



We offer a broad portfolio of mounting support for easy handling and supplementation of our products. From various tools to insulating sleeves and various screws, our components are matched to each other down to the last detail and thus facilitate assembly in compliance with the respective standards and protective regulations.

General ordering data

Type	FKSC M5X8 D9/SW2.5	Version	
Order No.	0295900000	Version	SAK Series, Allen hex screw, Screws, Number of poles: 1
GTIN (EAN)	4008190133337		
Qty.	50 ST		

Depth 7.5 mm



The Klippon® POK enclosure range is made from a high-quality glass fibre reinforced polyester and is ideal for applications and environments where corrosion resistance, impact resistance and a high IP protection class are a requirement.

Key features of the extensive product range:

- Available in 17 sizes
- Two standard finishes (colours): grey (similar to RAL 7001 for industrial use) and black (similar to RAL 9011 for harsh environments, Ex)
- Cover with stainless steel screws in cross-head / slotted design
- Moulded gasket made of silicone or chloroprene
- Fixing holes outside the sealed area to ensure high ingress protection of IP66
- Impact resistance up to 7 Joules
- Mounting directly in the enclosure or using an internal mounting plate
- Direct wall mounting possible using fixing holes or mounting feet
- Fastening thread to attach mounting rails and plates
- Up to E60 fire rating dependent on the configuration
- Weidmüller can manufacture and supply this enclosure to match customer specifications - fitted with all necessary terminals and cable glands.

General ordering data

Type	TS35X7.5 ST POK 1626	Version	
Order No.	8000003909	Version	Rail, TS 35, TS 35 x 7.5, Width: 243 mm, without slot, Steel, galvanic zinc plated and passivated
GTIN (EAN)	4050118652673		
Qty.	20 ST		
Type	TS35X7.5 ST K61	Version	
Order No.	8000037567	Version	Rail, TS 35, TS 35 x 7.5, Width: 243 mm, with slot, Steel, galvanized, chromium-plated
GTIN (EAN)	4050118653298		
Qty.	20 ST		

KLIPPON K61 EX**Weidmüller Interface GmbH & Co. KG**

Klingenbergstraße 26

D-32758 Detmold

Germany

www.weidmueller.com**Accessories****Depth 15 mm**

The system accessories for the Klippon® K enclosure series allows you to easily adapt the enclosures to meet the specific requirements of every application.

- DIN Rails TS 35 and TS 15
- Mounting plates
- Hinges
- Wall-mounted holder

Weidmüller can manufacture and supply this enclosure - according to customer specifications - fitted with all necessary terminals and cable glands.

General ordering data

Type	TS35X15 ST K61	Version	
Order No.	8000073097	Rail, TS 35, TS 35 x 15, Width: 243 mm, with slot, Steel, galvanic zinc plated and passivated	
GTIN (EAN)	4064675340508		
Qty.	20 ST		