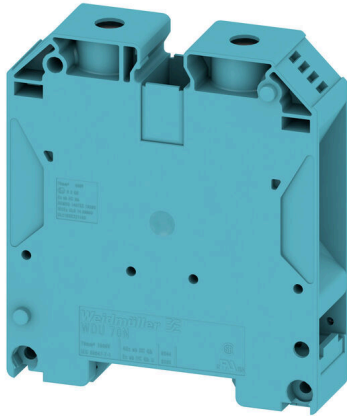


WDU 70N/35 BL**Weidmüller Interface GmbH & Co. KG**Klingenbergstraße 26
D-32758 Detmold
Germany

www.weidmueller.com

Product image

More and more components need to be housed within a confined space, in switchgear and panels. As part of the power feed-in, connecting conductors is becoming increasingly challenging, especially for large cross-sections. Our comprehensive range of connection solutions also enables convenient wiring in challenging space conditions. The compact design and the combination of many practical handling benefits make the supply of power to switchgear and panels simple, efficient, and space-saving.

General ordering data

| | |
|------------|---|
| Version | Feed-through terminal block, Screw connection, blue, 70 mm ² , 192 A, 1000 V, Number of connections: 2 |
| Order No. | 9512420000 |
| Type | WDU 70N/35 BL |
| GTIN (EAN) | 4008190403973 |
| Qty. | 10 items |

WDU 70N/35 BL

Weidmüller Interface GmbH & Co. KG

Klingenbergstraße 26

D-32758 Detmold

Germany

www.weidmueller.com

Technical data

Approvals

Approvals



| | |
|---------------------------|----------------------------|
| ROHS | Conform |
| UL File Number Search | UL Website |
| Certificate No. (cURus) | E60693 |
| Certificate No. (cURusEX) | E184763 |

Dimensions and weights

| | | | |
|--------------------------|-------------|----------------|-------------|
| Depth | 85 mm | Depth (inches) | 3.3464 inch |
| Depth including DIN rail | 86 mm | Height | 75 mm |
| Height (inches) | 2.9527 inch | Width | 20.5 mm |
| Width (inches) | 0.8071 inch | Net weight | 119.73 g |

Temperatures

| | | | |
|----------------------------------|----------------|----------------------------------|----------------|
| Storage temperature | -25 °C...55 °C | Ambient temperature | -60 °C...85 °C |
| Continuous operating temp., min. | -60 °C | Continuous operating temp., max. | 130 °C |

Environmental Product Compliance

| | | | |
|--------------------------|-----------------------------|------------------|--|
| RoHS Compliance Status | Compliant without exemption | | |
| REACH SVHC | No SVHC above 0.1 wt% | | |
| Product Carbon Footprint | Cradle to gate | 1.029 kg CO2 eq. | |

Material data

| | | | |
|---------------------------|-------|--------|------|
| Basic material | Wemid | Colour | blue |
| UL 94 flammability rating | V-0 | | |

Rating data IECEx/ATEX

| | | | |
|--------------------------------|--------------------|---------------------------------|--------------------|
| Certificate No. (ATEX) | DEMKO14ATEX1338U | Certificate No. (IECEX) | IECEXULD14.0005U |
| Max. voltage (ATEX) | 690 V | Current (ATEX) | 184 A |
| Wire cross section max. (ATEX) | 70 mm ² | Max. voltage (IECEX) | 690 V |
| Current (IECEX) | 184 A | Wire cross section max. (IECEX) | 70 mm ² |
| Marking EN 60079-7 | Ex eb II C Gb | Ex 2014/34/EU label | II 2 G D |

System specifications

| | | | |
|-------------------------------------|---|-------------------------------|-----|
| Version | Screw connection, for screwable cross-connection, in closed state | End cover plate required | No |
| Number of potentials | 1 | Number of levels | 1 |
| Number of clamping points per level | 2 | Number of potentials per tier | 1 |
| Levels cross-connected internally | No | PE connection | No |
| Mounting rail | TS 35 | N-function | Yes |
| PE function | No | PEN function | Yes |

WDU 70N/35 BL

Weidmüller Interface GmbH & Co. KG
 Klingenbergstraße 26
 D-32758 Detmold
 Germany

www.weidmueller.com

Technical data

2 clampable conductors (H05V/H07V) with equal cross-section (rated connection)

| | | | |
|--|--------------------|--|--------------------|
| Wire connection cross section, finely stranded with wire-end ferrules DIN 46228/1, 2 clampable wires, max. | 25 mm ² | Wire connection cross section, finely stranded with wire-end ferrules DIN 46228/1, 2 clampable wires, min. | 6 mm ² |
| Wire cross-section, finely stranded, two clampable wires, max. | 25 mm ² | Wire connection cross section, finely stranded, two clampable wires, min. | 10 mm ² |
| Cross-section for connected wire, stranded, two clampable wires, min. | 10 mm ² | | |

Additional technical data

| | | | |
|---------------------|-----------------|-----------------------------|-----|
| Open sides | closed | Number of similar terminals | 1 |
| Installation advice | Direct mounting | Explosion-tested version | Yes |
| Type of mounting | Snap-on | | |

CSA rating data

| | | | |
|-------------------------------|-------|-----------------------|----------------|
| Wire cross section max. (CSA) | 0 AWG | Voltage size C (CSA) | 600 V |
| Current size C (CSA) | 150 A | Certificate No. (CSA) | 200039-1581431 |
| Wire cross section min. (CSA) | 6 AWG | | |

Conductors for clamping (additional connection)

Connection type, additional connection Screw connection

Conductors for clamping (rated connection)

| | | | |
|---|--------------------|---|--------------------|
| Gauge to IEC 60947-1 | B11 | Wire connection cross section AWG, max. | AWG 0 |
| Connection direction | on side | Tightening torque, max. | 12 Nm |
| Tightening torque, min. | 8 Nm | Stripping length | 22 mm |
| Type of connection | Screw connection | Number of connections | 2 |
| Clamping range, max. | 95 mm ² | Clamping range, min. | 16 mm ² |
| Clamping screw | M 8 | Blade size | S6 (DIN 6911) |
| Wire connection cross section AWG, min. | AWG 6 | Wire connection cross-section, finely stranded with wire-end ferrules DIN 46228/4, max. | 50 mm ² |
| Wire connection cross-section, finely stranded with wire-end ferrules DIN 46228/4, min. | 16 mm ² | Wire connection cross-section, finely stranded with wire-end ferrules DIN 46228/1, max. | 70 mm ² |
| Wire connection cross-section, finely stranded with wire-end ferrules DIN 46228/1, min. | 16 mm ² | Wire connection cross section, finely stranded, max. | 70 mm ² |
| Wire connection cross section, finely stranded, min. | 16 mm ² | Connection cross-section, stranded, max. | 95 mm ² |
| Connection cross-section, stranded, min. | 16 mm ² | Wire connection cross-section, solid core, max. | 16 mm ² |
| Wire connection cross-section, solid core, min. | 16 mm ² | Connection cross-section, finely stranded, min. | 16 mm ² |

General

| | | | |
|---|-------|---------------------|-----------------|
| Wire connection cross section AWG, max. | AWG 0 | Installation advice | Direct mounting |
| Wire connection cross section AWG, min. | AWG 6 | Standards | IEC 60947-7-1 |
| Mounting rail | TS 35 | | |

WDU 70N/35 BL

Weidmüller Interface GmbH & Co. KG
 Klingenbergstraße 26
 D-32758 Detmold
 Germany

www.weidmueller.com

Technical data

PE rating data

PEN function Yes

Rating data

| | | | |
|--|--------------------|---------------------------------|---------------|
| Rated cross-section | 70 mm ² | Rated voltage | 1000 V |
| Rated DC voltage | 1000 V | Nominal current | 192 A |
| Current at maximum wires | 232 A | Standards | IEC 60947-7-1 |
| Volume resistance according to IEC 60947-7-x | 0.17 mΩ | Rated impulse withstand voltage | 8 kV |
| Power loss in accordance with IEC 60947-7-x | 6.14 W | Pollution severity | 3 |

UL rating data

| | | | |
|--|-------|--|--------|
| Conductor size Factory wiring max. (cURus) | 0 AWG | Certificate No. (cURus) | E60693 |
| Conductor size Field wiring min. (cURus) | 6 AWG | Conductor size Factory wiring min. (cURus) | 6 AWG |
| Voltage size C (cURus) | 600 V | Current size C (cURus) | 150 A |
| Conductor size Field wiring max. (cURus) | 0 AWG | | |

Classifications

| | | | |
|-------------|-------------|-------------|-------------|
| ETIM 8.0 | EC000897 | ETIM 9.0 | EC000897 |
| ETIM 10.0 | EC000897 | ECLASS 14.0 | 27-25-01-01 |
| ECLASS 15.0 | 27-25-01-01 | | |

Drawings



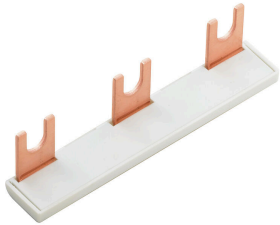
WDU 70N/35 BL

Weidmüller Interface GmbH & Co. KG
Klingenbergstraße 26
D-32758 Detmold
Germany

www.weidmueller.com

Accessories

Cross connector



The distribution or multiplication of a potential to adjoining terminal blocks is realized via a cross-connection. Additional wiring effort can be easily avoided. Even if the poles are broken out, contact reliability in the terminal blocks is still ensured. Our portfolio offers pluggable and screwable cross-connection systems for modular terminal blocks.

General ordering data

| | | |
|------------|----------------------------|---|
| Type | WQV 70N/2 | Version |
| Order No. | 9512240000 | Cross-connector (terminal), when screwed in, Silver grey, 192 A, |
| GTIN (EAN) | 4008190403928 | Number of poles: 2, Pitch in mm (P): 20.50, Insulated: No, Width: 9.5 |
| Qty. | 5 ST | mm |
| Type | WQV 70N/3 | Version |
| Order No. | 9512250000 | Cross-connector (terminal), when screwed in, Silver grey, 192 A, |
| GTIN (EAN) | 4008190403935 | Number of poles: 3, Pitch in mm (P): 20.50, Insulated: No, Width: 9.5 |
| Qty. | 5 ST | mm |
| Type | WQV 70N/4 | Version |
| Order No. | 9531290000 | Cross-connector (terminal), when screwed in, Silver grey, 192 A, |
| GTIN (EAN) | 4008190351243 | Number of poles: 4, Pitch in mm (P): 20.50, Insulated: No, Width: 9.5 |
| Qty. | 5 ST | mm |

End bracket



Weidmüller's range of products includes end brackets that guarantee a permanent, reliable mounting on the terminal rail and prevent sliding. Versions with and without screws are available. The end brackets include marking options, also for group markers, and also a test plug holder.

General ordering data

| | | |
|------------|----------------------------|--|
| Type | WEW 35/1 | Version |
| Order No. | 1059000000 | End bracket, dark beige, TS 35, V-2, Wemid, Width: 12 mm, 100 °C |
| GTIN (EAN) | 4008190172282 | |
| Qty. | 50 ST | |

WDU 70N/35 BL

Weidmüller Interface GmbH & Co. KG
 Klingenbergstraße 26
 D-32758 Detmold
 Germany

www.weidmueller.com

Accessories

auxillary connection

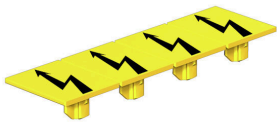


The additional connection enables a separate voltage tap. This can be used, for example, for the emergency power supply before the main switch or simply as an additional connection within the application.

General ordering data

| | | | |
|------------|----------------------------|---|--|
| Type | WZAD 70N | Version | |
| Order No. | 1964830000 | Auxiliary connection (terminal), 6 mm ² , Number of connections: 1 | |
| GTIN (EAN) | 4032248651474 | | |
| Qty. | 5 ST | | |

Warning cover



Warning covers with a flash symbol provide more safety for man and machine. They are used where external voltage must be indicated within the application.

General ordering data

| | | | |
|------------|----------------------------|---|--|
| Type | WAD 20 GE WSD | Version | |
| Order No. | 9512260000 | Terminal marking, yellow, Pitch in mm (P): 18.00, Printed characters: Symbols, horizontal | |
| GTIN (EAN) | 4008190403942 | | |
| Qty. | 10 ST | | |

Socket wrench sets



Allen key made from fully hardened, high-alloy chromium-vanadium- steel, acc. to DIN ISO 2936 L (DIN 911), high-quality refined surface.

General ordering data

| | | | |
|------------|----------------------------|-----------------|--|
| Type | SKS 2,0-8,0 MR | Version | |
| Order No. | 9008870000 | socket wrenches | |
| GTIN (EAN) | 4032248266623 | | |
| Qty. | 1 ST | | |

WDU 70N/35 BL

Weidmüller Interface GmbH & Co. KG
 Klingenbergstraße 26
 D-32758 Detmold
 Germany

www.weidmueller.com

Accessories

Blank



The Dekafix (DEK) marker is the universal marker for all conductor and plug-in connectors as well as for electronic sub-assemblies. The system is ideal for short number sequences and covers a wide range of ready-printed markers.

Strips for fast installation in only one work step. The printing is easy to read, rich in contrast and available in various widths.

- Large range of ready-to-use markers
 - Strips for fast installation
 - Terminal markers, suitable for all Weidmüller cable connectors
 - Available as blank MultiCard or with standard printing
- For custom printing: Please send us a file of our labeling software M-Print PRO or M-Print PRO Online (without installation) for your labeling specifications.

General ordering data

| | | |
|------------|----------------------------|--|
| Type | DEK 5/5 MC NE WS | Version |
| Order No. | 1609801044 | Dekafix, Terminal marker, 5 x 5 mm, Pitch in mm (P): 5.00 |
| GTIN (EAN) | 4008190397111 | Weidmueller, white |
| Qty. | 1000 ST | |
| Type | WS 12/5 MC NE WS | Version |
| Order No. | 1609860000 | WS, Terminal marker, 12 x 5 mm, Pitch in mm (P): 5.00 Weidmueller, |
| GTIN (EAN) | 4008190203481 | Allen-Bradley, white |
| Qty. | 720 ST | |

SchT group marker carrier



The SchT 5 S group tag carriers are clipped directly onto the TS 32 mounting rail (G-rail) or the TS 35 mounting rail (top-hat rail). It is therefore possible to label the terminal strip irrespective of the terminal and the type of terminal. SchT 5 and SchT 5 S are fitted with ESO 5, STR 5 protective strips.

The SchT 7 is a hinged group tag carrier for inlay tags which enables easy access to the clamping screw. The SchT 7 is fitted with ESO 7, STR 7 protective strips or DEK 5.

Inlay tags and protective strips can be found under "Accessories".

General ordering data

| | | |
|------------|----------------------------|---|
| Type | SCHT 7 | Version |
| Order No. | 0517960000 | SCHT, Terminal marker, 39.3 x 8 mm, Pitch in mm (P): 7.00 |
| GTIN (EAN) | 4008190001742 | Weidmueller, white |
| Qty. | 20 ST | |

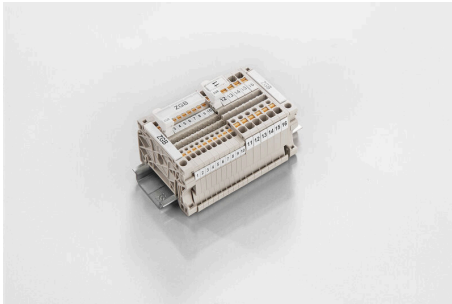
WDU 70N/35 BL

Weidmüller Interface GmbH & Co. KG
 Klingenbergstraße 26
 D-32758 Detmold
 Germany

www.weidmueller.com

Accessories

ZGB pivotable group tag holder



The ZGB 15 is a hinged group tag carrier. The tag carrier can hold the dekafix 5, WS 12/5 terminal markers or the inlay tag ESO 15.

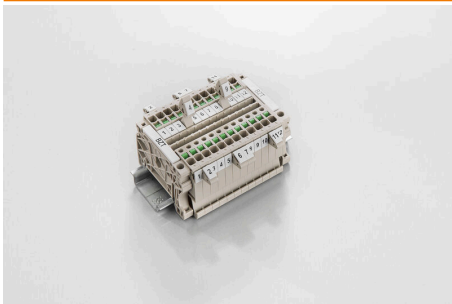
The ZGB 30 is a hinged group tag carrier. The tag carrier can hold the dekafix 5, WS 12/5 terminal markers or the inlay tag ESO 7.

Inlay tags and protective strips can be found under "Accessories".

General ordering data

| | | |
|------------|----------------------------|---|
| Type | ZGB 15 | Version |
| Order No. | 1636530000 | Terminal markers, Terminal marker, 15 x 7 mm, Pitch in mm (P): 5.00 |
| GTIN (EAN) | 4008190297053 | Weidmueller, white |
| Qty. | 20 ST | |
| Type | ZGB 30 | Version |
| Order No. | 1611930000 | Terminal markers, Terminal marker, 32 x 7 mm, Pitch in mm (P): 5.00 |
| GTIN (EAN) | 4008190002251 | Weidmueller, white |
| Qty. | 20 ST | |

Marker holder



The marker holder offer the possibility of additional mounting of standard markers with a pitch of 5 or 5.1 mm. The angled holders can be optionally snapped together and could be mounted in all standard marking channels of the Klippon® Connect modular terminal blocks. Fitting marker types could be found under the respective accessories of the designation marking holder.

General ordering data

| | | |
|------------|----------------------------|----------------------------|
| Type | BZT 1 WS 10/5 | Version |
| Order No. | 1805490000 | Accessories, Marker holder |
| GTIN (EAN) | 4032248270231 | |
| Qty. | 100 ST | |
| Type | BZT 1 ZA WS 10/5 | Version |
| Order No. | 1805520000 | Accessories, Marker holder |
| GTIN (EAN) | 4032248270248 | |
| Qty. | 100 ST | |

WDU 70N/35 BL

Weidmüller Interface GmbH & Co. KG
 Klingenbergstraße 26
 D-32758 Detmold
 Germany

www.weidmueller.com

Accessories

WS 12/5



WS/ DEK

MultiMark terminal markers use an innovative composite material made from two components. The hard base contour of the marker snaps securely into the connector. The elastic surface finish makes the marker easy to mount. This specially punched material enables the strips to be stretched to accommodate the slight variations in spacing that tend to add up, especially with long terminal blocks. Another advantage: the excellent printability of the surface material guarantees durable and wear-resistant labelling. A print resolution of 300 dpi also produces a very legible script.

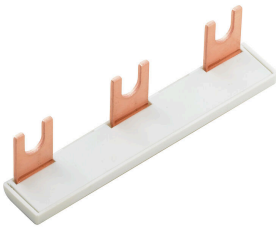
Your benefits with MultiMark

- Firm hold and durable printing
- Continuous strips save installation time
- Easy mounting thanks to an innovative composite material
- Large label field for optimal legibility
- High flexibility thanks to manufacturer independence

General ordering data

| | | | |
|------------|----------------------------|--|--|
| Type | WS 12/5 MM WS | Version | |
| Order No. | 2007190000 | WS, Terminal marker, 12 x 5 mm, Weidmueller, white | |
| GTIN (EAN) | 4050118392036 | | |
| Qty. | 800 ST | | |

Cross connector



The distribution or multiplication of a potential to adjoining terminal blocks is realized via a cross-connection. Additional wiring effort can be easily avoided. Even if the poles are broken out, contact reliability in the terminal blocks is still ensured. Our portfolio offers pluggable and screwable cross-connection systems for modular terminal blocks.

General ordering data

| | | | |
|------------|----------------------------|---|--|
| Type | WQB PEN 70N | Version | |
| Order No. | 1079700000 | Cross-connector (terminal), when screwed in, Silver grey, 192 A, | |
| GTIN (EAN) | 4008190370114 | Number of poles: 2, Pitch in mm (P): 20.50, Insulated: No, Width: | |
| Qty. | 5 ST | 30.4 mm | |