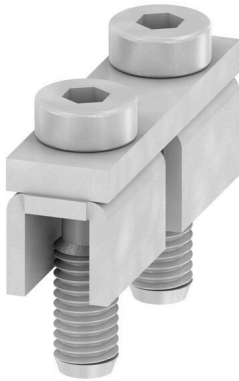


**WQV 70N/2****Weidmüller Interface GmbH & Co. KG**Klingenbergstraße 26  
D-32758 Detmold  
Germany

www.weidmueller.com

**Product image**

The distribution or multiplication of a potential to adjoining terminal blocks is realized via a cross-connection. Additional wiring effort can be easily avoided. Even if the poles are broken out, contact reliability in the terminal blocks is still ensured. Our portfolio offers pluggable and screwable cross-connection systems for modular terminal blocks.

**General ordering data**

Version	Cross-connector (terminal), when screwed in, Silver grey, 192 A, Number of poles: 2, Pitch in mm (P): 20.50, Insulated: No, Width: 9.5 mm
Order No.	<a href="#">9512240000</a>
Type	WQV 70N/2
GTIN (EAN)	4008190403928
Qty.	5 items

## WQV 70N/2

Weidmüller Interface GmbH &amp; Co. KG

Klingenbergstraße 26

D-32758 Detmold

Germany

www.weidmueller.com

## Technical data

## Approvals

ROHS Conform

## Dimensions and weights

Depth	18.6 mm	Depth (inches)	0.7323 inch
Height	30.5 mm	Height (inches)	1.2008 inch
Width	9.5 mm	Width (inches)	0.374 inch
Net weight	24.86 g		

## Temperatures

Storage temperature	-25 °C...55 °C	Ambient temperature	-5 °C...40 °C
Continuous operating temp., min.	-60 °C	Continuous operating temp., max.	130 °C

## Environmental Product Compliance

RoHS Compliance Status	Compliant without exemption
REACH SVHC	No SVHC above 0.1 wt%

## Material data

Basic material	tinned copper	Colour	Silver grey
----------------	---------------	--------	-------------

## System specifications

Version For the terminals

## Additional technical data

Type of fixing	when screwed in	Installation advice	Direct mounting
Explosion-tested version	No		

## Dimensions

Pitch in mm (P) 20.50 mm

## General

Number of poles	2	Installation advice	Direct mounting
-----------------	---	---------------------	-----------------

## Rating data

Rated voltage	400 V	Nominal current	192 A
---------------	-------	-----------------	-------

## Classifications

ETIM 8.0	EC000489	ETIM 9.0	EC000489
ETIM 10.0	EC000489	ECLASS 14.0	27-25-03-03
ECLASS 15.0	27-25-03-03		