

POK MOPL 0816**Weidmüller Interface GmbH & Co. KG**

Klingenbergstraße 26

D-32758 Detmold

Germany

www.weidmueller.com

The Klippon® POK enclosure range is made from a high-quality glass fibre reinforced polyester and is ideal for applications and environments where corrosion resistance, impact resistance and a high IP protection class are a requirement.

Key features of the extensive product range:

- Available in 17 sizes
- Two standard finishes (colours): grey (similar to RAL 7001 for industrial use) and black (similar to RAL 9011 for harsh environments, Ex)
- Cover with stainless steel screws in cross-head / slotted design
- Moulded gasket made of silicone or chloroprene
- Fixing holes outside the sealed area to ensure high ingress protection of IP66
- Impact resistance up to 7 Joules
- Mounting directly in the enclosure or using an internal mounting plate
- Direct wall mounting possible using fixing holes or mounting feet
- Fastening thread to attach mounting rails and plates
- Up to E60 fire rating dependent on the configuration
-
- Weidmüller can manufacture and supply this enclosure to match customer specifications - fitted with all necessary terminals and cable glands.

General ordering data

Version	Klippon POK (polyester empty enclosure), Mounting plate, Height: 64 mm, Width: 148.5 mm, Depth: 1.5 mm, Basic material: Sheet steel, galvanized, Miscellaneous, silver
Order No.	9510680000
Type	POK MOPL 0816
GTIN (EAN)	4008190498191
Qty.	1 items

Technical data

Approvals

ROHS	Conform
------	---------

Dimensions and weights

Depth	1.5 mm	Depth (inches)	0.0591 inch
Height	64 mm	Height (inches)	2.5197 inch
Width	148.5 mm	Width (inches)	5.8464 inch
Mounting dimension - width	139 mm	Net weight	26 g

Temperatures

Operating temperature

Environmental Product Compliance

RoHS Compliance Status	Compliant without exemption
REACH SVHC	No SVHC above 0.1 wt%

General information

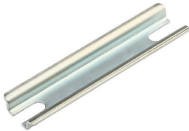
Material thickness	1.5 mm	Type of fixing	when screwed in
Surface finish	Miscellaneous	Basic material	Sheet steel, galvanized

Classifications

ETIM 6.0	EC000213	ETIM 7.0	EC000213
ETIM 8.0	EC000213	ETIM 9.0	EC000213
ETIM 10.0	EC000213	ECLASS 9.0	27-40-06-39
ECLASS 9.1	27-18-92-90	ECLASS 10.0	27-40-06-39
ECLASS 11.0	27-40-06-39	ECLASS 12.0	27-40-06-39
ECLASS 13.0	27-40-06-39	ECLASS 14.0	27-40-06-39
ECLASS 15.0	27-40-06-39		

Accessories

TS 15



The Klippon® POK enclosure range is made from a high-quality glass fibre reinforced polyester and is ideal for applications and environments where corrosion resistance, impact resistance and a high IP protection class are a requirement.

Key features of the extensive product range:

- Available in 17 sizes
- Two standard finishes (colours): grey (similar to RAL 7001 for industrial use) and black (similar to RAL 9011 for harsh environments, Ex)
- Cover with stainless steel screws in cross-head / slotted design
- Moulded gasket made of silicone or chloroprene
- Fixing holes outside the sealed area to ensure high ingress protection of IP66
- Impact resistance up to 7 Joules
- Mounting directly in the enclosure or using an internal mounting plate
- Direct wall mounting possible using fixing holes or mounting feet
- Fastening thread to attach mounting rails and plates
- Up to E60 fire rating dependent on the configuration
- Weidmüller can manufacture and supply this enclosure to match customer specifications - fitted with all necessary terminals and cable glands.

General ordering data

Type	TS15X5 ST POK 0816	Version
Order No.	8000003891	Rail, TS 15, Width: 147 mm, without slot, Steel, galvanic zinc plated
GTIN (EAN)	4050118652567	and passivated
Qty.	20 ST	