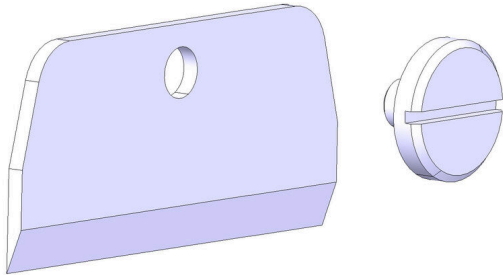


ERME MULTI-STRIPAX

Weidmüller Interface GmbH & Co. KG
Klingenbergstraße 26
D-32758 Detmold
Germany

www.weidmueller.com



- For flexible and solid conductors with special insulating materials
- High-quality stripping for industrial applications (complies with aircraft industry requirements)
- Specially shaped blades enable stripping of special types of insulation and conductor configurations
- Stripping length adjustable via end stop
- Very versatile thanks to interchangeable stripping units
- Stripping results reproduced accurately over and over again
- No damage to the conductor
- A long-lasting, reliable tool thanks to its sturdy design
- Integrated cutting function

General ordering data

| | |
|------------|----------------------------|
| Version | Spare cutting blade |
| Order No. | 9203070000 |
| Type | ERME MULTI-STRIPAX |
| GTIN (EAN) | 4032248538096 |
| Qty. | 1 items |

ERME MULTI-STRIPAX

Weidmüller Interface GmbH & Co. KG
 Klingenbergstraße 26
 D-32758 Detmold
 Germany

www.weidmueller.com

Technical data

Dimensions and weights

| | | | |
|------------|--------|-----------------|-------------|
| Height | 85 mm | Height (inches) | 3.3464 inch |
| Width | 250 mm | Width (inches) | 9.8425 inch |
| Length | 85 mm | Length (inches) | 3.3464 inch |
| Net weight | 11 g | | |

Environmental Product Compliance

| | |
|------------------------|--------------------------------------|
| RoHS Compliance Status | Not affected |
| REACH SVHC | Lead 7439-92-1 |
| SCIP | 6a3438d7-aa8c-48e4-8879-adf736ca79e3 |

Technical data

| | |
|------------------------|----------------------------|
| Description of article | Multi-Stripax spare cutter |
|------------------------|----------------------------|

Stripping tools

| | | | |
|-------------------------------|---------------------|------------------------------------|-------------------|
| max. cutting capacity, solid | 2.5 mm ² | max. cutting capacity, fine-strand | 6 mm ² |
| max. cutting capacity, ribbon | 10,2 mm x 4 mm | | |

Classifications

| | | | |
|-------------|-------------|-------------|-------------|
| ETIM 8.0 | EC001509 | ETIM 9.0 | EC001509 |
| ETIM 10.0 | EC001509 | ECLASS 14.0 | 21-04-48-91 |
| ECLASS 15.0 | 21-04-48-91 | | |