

H0,5/14D ZH W

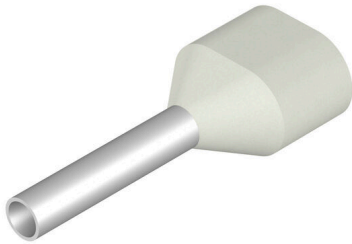
Weidmüller Interface GmbH & Co. KG

Klingenbergstraße 26

D-32758 Detmold

Germany

www.weidmueller.com



- supplied loose in polybag
- Weidmüller colour code
- DIN colour code

General ordering data

| | |
|------------|---|
| Version | Wire-end ferrule, Twin wire-end ferrule, 11 mm, 8 mm, white |
| Order No. | 9037380000 |
| Type | H0,5/14D ZH W |
| GTIN (EAN) | 4008 19049286 1 |
| Qty. | 500 items |
| Packaging | loose |

H0,5/14D ZH W

Weidmüller Interface GmbH & Co. KG
 Klingenbergstraße 26
 D-32758 Detmold
 Germany

www.weidmueller.com

Technical data

Approvals

Approvals



| | |
|-------------------------|----------------------------|
| ROHS | Conform |
| UL File Number Search | UL Website |
| Certificate no. (cULus) | E499744 |

Dimensions and weights

| | |
|------------|--------|
| Net weight | 0.09 g |
|------------|--------|

Environmental Product Compliance

| | |
|------------------------|-----------------------------|
| RoHS Compliance Status | Compliant without exemption |
| REACH SVHC | No SVHC above 0.1 wt% |

Technical data

| | | | |
|------------------------|------------------------------|---------|-----------------------|
| Description of article | Twin wire end ferrule, white | Version | Twin wire-end ferrule |
|------------------------|------------------------------|---------|-----------------------|

Wire-end ferrules

| | | | |
|---|--------|-----------------------------|---------------------|
| Contact surface diameter (D1) | 1.4 mm | Contact surface length (L2) | 8 mm |
| Collar width (B) | 3 mm | Collar height (A) | 5 mm |
| Plastic collar thickness (S2) | 0.3 mm | L1 in mm | 14.00 mm |
| Wire connection cross section AWG, max. | AWG 20 | Metal sleeve thickness (S1) | 0.15 mm |
| Stripping length | 11 mm | Conductor cross-section | 0.5 mm ² |
| Colour code | DIN | | |

Classifications

| | | | |
|-------------|-------------|-------------|-------------|
| ETIM 8.0 | EC000005 | ETIM 9.0 | EC000005 |
| ETIM 10.0 | EC000005 | ECLASS 14.0 | 27-40-02-01 |
| ECLASS 15.0 | 27-40-02-01 | | |

Drawing

