

BUE SPX

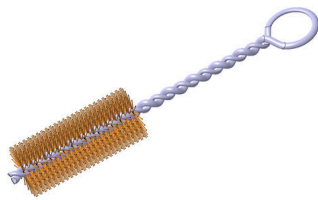
Weidmüller Interface GmbH & Co. KG

Klingenbergstraße 26

D-32758 Detmold

Germany

www.weidmueller.com



- Stripping tools with automatic self-adjustment
- For flexible and solid conductors
- Ideally suitable for mechanical and plant engineering, railway and rail traffic, wind energy, robot technology, explosion protection as well as marine, offshore and ship building sectors
- Stripping length adjustable via end stop
- Automatic opening of clamping jaws after stripping
- No fanning-out of individual conductors
- Adjustable to diverse insulation thicknesses
- Double-insulated cables in two process steps without special adjustment
- No play in self-adjusting cutting unit
- Long service life
- Optimised ergonomic design

General ordering data

| | |
|------------|----------------------------|
| Version | Accessories, Brush |
| Order No. | 9005450000 |
| Type | BUE SPX |
| GTIN (EAN) | 4008190146634 |
| Qty. | 5 items |

BUE SPX

Weidmüller Interface GmbH & Co. KG
Klingenbergstraße 26
D-32758 Detmold
Germany

www.weidmueller.com

Technical data**Dimensions and weights**

| | |
|------------|--------|
| Net weight | 1.98 g |
|------------|--------|

Environmental Product Compliance

| | |
|------------------------|--------------------------------------|
| RoHS Compliance Status | Not affected |
| REACH SVHC | Lead 7439-92-1 |
| SCIP | cf06c250-ed1e-4a45-9c1b-c5c8cbf13bf0 |

Technical data

| | |
|------------------------|-------------------|
| Description of article | Brush for Stripax |
|------------------------|-------------------|

Classifications

| | | | |
|-------------|-------------|-------------|-------------|
| ETIM 8.0 | EC002185 | ETIM 9.0 | EC011128 |
| ETIM 10.0 | EC011128 | ECLASS 14.0 | 21-04-36-13 |
| ECLASS 15.0 | 21-04-36-13 | | |