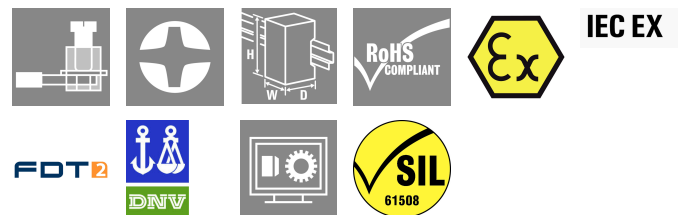


## ACT20X-HTI-SAO-S

**Weidmüller Interface GmbH & Co. KG**  
 Klingenbergstraße 26  
 D-32758 Detmold  
 Germany

www.weidmueller.com

### Product image, Similar to illustration



The ACT20X-HTI-SAO / 2HTI-2SAO temperature transducers record temperatures from PT100 sensors and thermocouples from Ex zone 0. Current loops from 0(4) to 20 mA can also be connected on the input side.

On the output side, there are active and passive current loops available for the safe zone.

Integrated alarm contacts issue an alert in the event of a malfunction; this makes troubleshooting easier and increases system availability.

The rail-mounted current output isolators are optionally available in one- or two-channel versions.

With 11 mm width per channel, the devices need little space in the electrical cabinet.

### General ordering data

Version	EX signal isolating converter, Ex-input: I, 9, Safe-output: 4-20mA, 2-channel, Input : Temperature, 0-20 mA, EX, Output : 0(4)-20 mA, Safe, 4-20 mA
Order No.	<a href="#">8965470000</a>
Type	ACT20X-HTI-SAO-S
GTIN (EAN)	4032248785087
Qty.	1 items

## ACT20X-HTI-SAO-S

Weidmüller Interface GmbH &amp; Co. KG

Klingenbergstraße 26  
D-32758 Detmold  
Germany

www.weidmueller.com

## Technical data

## Approvals

Approvals CE; CULUS; DETNORVER; FMEX; FUSAFETY; IECEXKEM; KEMAATEX

Approvals DNVGL;

Approvals



ROHS Conform

UL File Number Search [UL Website](#)

Certificate no. (cULus) E337701

## Dimensions and weights

Depth	113.6 mm	Depth (inches)	4.4724 inch
Height	119.2 mm	Height (inches)	4.6929 inch
Width	22.5 mm	Width (inches)	0.8858 inch
Net weight	178 g		

## Temperatures

Storage temperature	-20 °C...85 °C	Operating temperature	-20 °C...60 °C
Humidity	0...95 % (no condensation)		

## Probability of failure

SIL PAPER	SIL certificate - PDF/ Cert_Weidmueller_070902_P0002_C003_V2R1.pdf (application/pdf)	SIL in compliance with IEC 61508	2
MTBF	111 a		

## Environmental Product Compliance

RoHS Compliance Status	Compliant with exemption		
RoHS Exemption (if applicable/known)	7a, 7cl		
REACH SVHC	Lead 7439-92-1		
SCIP	2f6dd957-421a-46db-a0c2-cf1609156924		

## Assembling

Type of mounting	DIN rail, Snap mounting support rail	Mounting rail	TS 35
Mounting position	horizontal or vertical		

## Input EX

Sensor	2-/3-/4-wire, RTD: PT10, PT20, PT50, PT100, PT250, PT300, PT400, PT500, PT1000, Ni50, Ni100, Ni120, Ni1000, Thermocouples: B, E, J, K, N, R, S, T; in compliance with IEC 60584-1 and	Type	intrinsically safe circuit, RTD, TC, DC (mA)
--------	--	------	---

## ACT20X-HTI-SAO-S

**Weidmüller Interface GmbH & Co. KG**  
 Klingenbergstraße 26  
 D-32758 Detmold  
 Germany

www.weidmueller.com

## Technical data

	L, U in compliance with DIN43710		
Line resistance in measuring circuit	≤ 50 Ω	Temperature input range	Configurable, PT100: -200...+850 °C, PT200: -200...+850 °C, PT1000: -200...+850 °C, NI100: -60°C...+250 °C, Ni120: -80 °C...+320 °C, NI1000: -60°C...+250 °C, B: +100... +1820 °C, E: (-100... +1000 °C), J: (-100... +1200 °C), K: (-180... +1372 °C), L: (-200...+900 °C), N: (-180...+1300 °C), R: (-50...+1760 °C), S: (-50...+1760 °C), T: (-200... +400 °C), U: (-200...+600 °C), W3: (0...+2300 °C), W5: (0...+2300 °C), LR: (-200...+800 °C)
Input current	0...20 mA, 4...20mA	Input resistance, current	20 Ω + PTC 50 Ω

### Output

Number of outputs	1	Load impedance current	≤ 600 Ω
Influence of load resistance	≤ 0.01% of span / 100 Ω	Type	active (as current source) or passive (as current sink)
Output current	0...23 mA, configurable: 0...20 / 4...20 / 20...0 / 20...4 mA, configurable downscale (3.5 mA) / upscale (23 mA) @ error	Output signal limit	3.8...20.5 mA / 0...20.5 mA (dependent on range)

### Output (Status)

Type	Status relay, 1 NC (voltage-free)	Alarm function	Device error, No supply voltage
Nominal switching voltage	≤ 125 V AC / 110 V DC (safe area) ≤ 32 V AC / 32 V DC (zone 2)	Continuous current	≤ 0.5 A AC / 0.3 A DC (safe zone), ≤ 0,5 A AC / 1 A DC (zone 2)
Power rating	≤ 62.5 VA / 32 W (safe area) ≤ 16 VA / 32 W (Zone 2)		

### General specifications

Type of connection	Screw connection	Humidity	0...95 % (no condensation)
Protection degree	IP20	Supply voltage	19.2...31.2 V DC
Step response time	≤ 400 ms (with current), ≤ 1 s (with temperature)	Configuration	With FDT/DTM software, Requires configuration adapter 8978580000 CBX200 USB
Operating altitude	≤ 2000 m		

### Insulation coordination

EMC standards	EN 61326-1	Standards	EN 61010-1
Insulation voltage	2.6 kV (input / output)	Rated voltage	300 V

## ACT20X-HTI-SAO-S

Weidmüller Interface GmbH &amp; Co. KG

Klingenbergstraße 26

D-32758 Detmold

Germany

www.weidmueller.com

## Technical data

## Data for Ex applications (ATEX)

ATEX - gas labelling	II (1) G [Ex ia Ga] IIC/IIB/IIA	IECEx - dust labelling	[Ex ia Da] IIIC
ATEX - dust labelling	II (1) D [Ex ia Da] IIIC, I (M1) [Ex ia Ma] I	IECEx - gas labelling	Ex ec nC IIC T4 Gc, [Ex ia Ga] IIC/IIB/IIA
Installation location	Device installed in safe area, zone 2		

## Connection data

Type of connection	Screw connection	Tightening torque, min.	0.4 Nm
Tightening torque, max.	0.6 Nm	Clamping range, rated connection	2.5 mm <sup>2</sup>
Clamping range, min.	0.25 mm <sup>2</sup>	Clamping range, max.	2.5 mm <sup>2</sup>
Wire connection cross section AWG, min.	AWG 26	Wire connection cross section AWG, max.	AWG 12

## Guarantee

Time interval	3 years
---------------	---------

## Part description

Product description	<p>The devices of the ACT20X-HTI-SAO-S family transmit analog signals galvanic isolated from hazardous areas to the safe area. For this purpose the input circuits are designed intrinsically safe.</p> <p>Features</p> <ul style="list-style-type: none"> <li>• Configuration and diagnosis via FDT/DTM Software "WI-Manager".</li> <li>• The device can be mounted in the safe area and in zone 2 / division 2 and receive signals from zone 0, 1, 2, 20, 21 and 22, as well as Class I/II/III, division 1, group A-G.</li> <li>• The passive signal inputs for RTD, TC and mA are made for one or two channels and completely electrically isolated.</li> <li>• The two-channel version is suitable to use as a signal splitter.</li> <li>• As cold junction compensation for the TC signal input, either the internal cold junction compensation or for even higher accuracy an external cold junction compensation terminal is used.</li> <li>• Extended self diagnostic: Monitoring of error events and cable breakage via the individual status relay.</li> <li>• Front LEDs indicates operation status and malfunction.</li> <li>• 3-way galvanic isolation between input, output and power supply.</li> </ul>
---------------------	--

## Classifications

ETIM 8.0	EC002919	ETIM 9.0	EC002919
ETIM 10.0	EC002919	ECLASS 14.0	27-21-01-29
ECLASS 15.0	27-21-01-29		

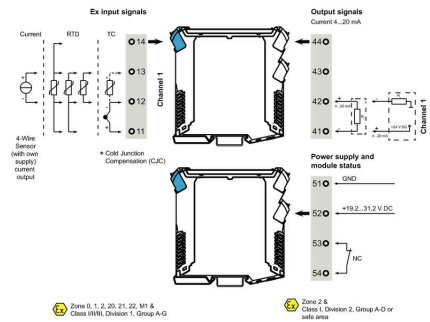
**ACT20X-HTI-SAO-S**

**Weidmüller Interface GmbH & Co. KG**  
 Klingenbergstraße 26  
 D-32758 Detmold  
 Germany

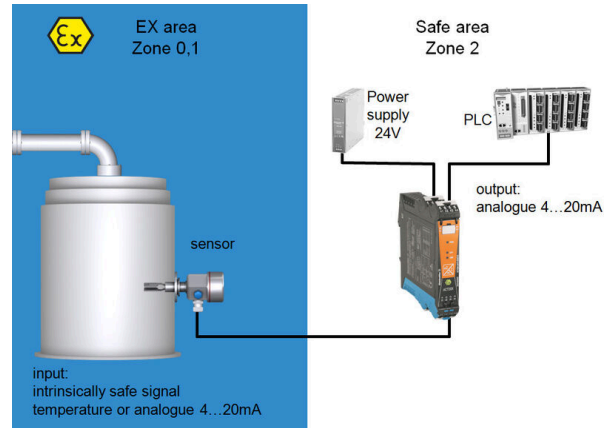
**Drawings**

www.weidmueller.com

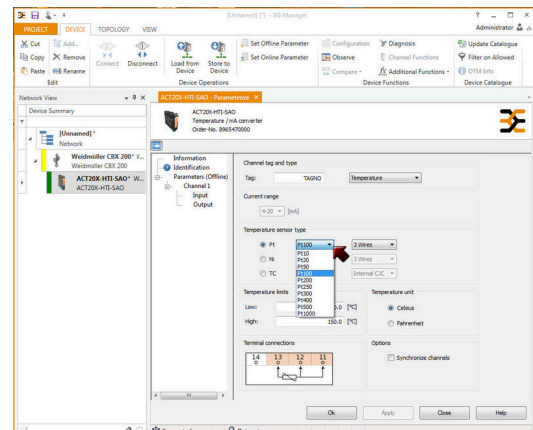
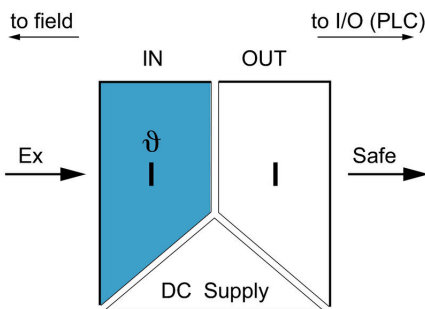
**Connection diagram**

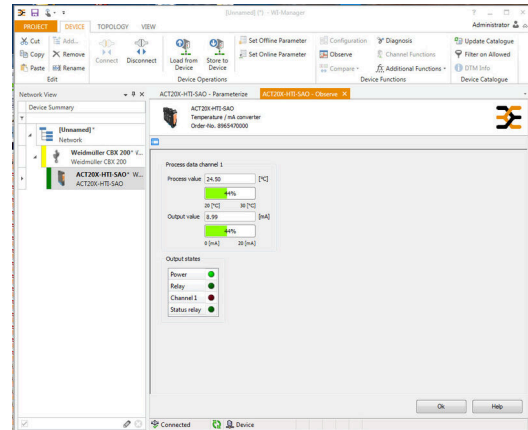
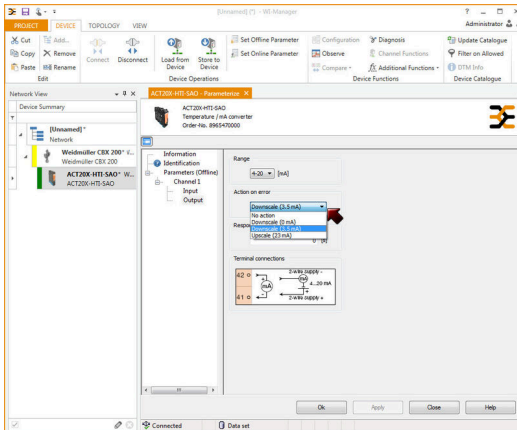


**Application**



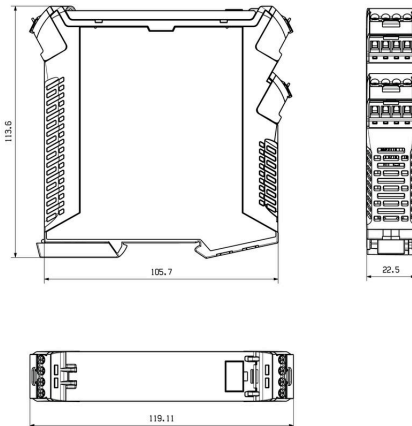
**Block diagram**





screenshot of output configuration with FDT2 / DTM software

## Dimensioned drawing



Removable terminals with coding