

IE-M12-PCBCE-PANEL

Weidmüller Interface GmbH & Co. KG
Klingenbergstraße 26
D-32758 Detmold
Germany

www.weidmueller.com



General ordering data

Version	PCB connection element M12, Solder connection, Cat.5 (ISO/IEC 11801), IP65 in acc. with DIN EN 60529
Order No.	8902820000
Type	IE-M12-PCBCE-PANEL
GTIN (EAN)	4032248658183
Qty.	10 items

IE-M12-PCBCE-PANEL

Weidmüller Interface GmbH & Co. KG
 Klingenbergstraße 26
 D-32758 Detmold
 Germany

www.weidmueller.com

Technical data

Approvals

ROHS	Conform
------	---------

Dimensions and weights

Net weight	11.6 g
------------	--------

Temperatures

Storage temperature	Operating temperature	-25 °C...85 °C
Installation temperature		

Environmental Product Compliance

RoHS Compliance Status	Compliant with exemption
RoHS Exemption (if applicable/known)	6c
REACH SVHC	Lead 7439-92-1
SCIP	3e8ceb07-2a6e-42e7-9cfb-aa443d2916b3

Technical data of PCB plug-in connector

Number of poles	4	Coding	D-coded
Protection degree	IP65 in acc. with DIN EN 60529	Housing main material	CuZn, Polyamide, nickel-plated
Connection thread	M12		

General Info

Number of poles	4	Connection 1	M12
Connection 2	Solder connection	Description of article	Connecting element, clip-on
Composition	Reflow compatible	Housing main material	CuZn, Polyamide, nickel-plated
Category	Cat.5 (ISO/IEC 11801)	Connection thread	M12
Shielding	360° shield contact	Protection degree	IP65 in acc. with DIN EN 60529

Important note

Notes

Classifications

ETIM 8.0	EC003568	ETIM 9.0	EC003568
ETIM 10.0	EC003568	ECLASS 14.0	27-44-01-10
ECLASS 15.0	27-44-01-10		

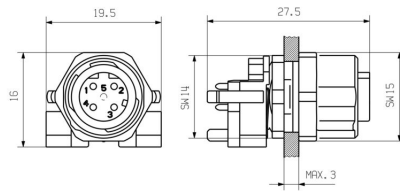
IE-M12-PCBCE-PANEL

Weidmüller Interface GmbH & Co. KG
Klingenbergstraße 26
D-32758 Detmold
Germany

Drawings

www.weidmueller.com

Dimensioned drawing



Dimensioned drawing

