

IE-M12-PCBCE**Weidmüller Interface GmbH & Co. KG**Klingenbergstraße 26
D-32758 Detmold
Germany

www.weidmueller.com

**General ordering data**

| | |
|------------|--|
| Version | PCB connection element M12, Solder connection, Cat.5 (ISO/IEC 11801), IP65 in acc. with DIN EN 60529 |
| Order No. | 8902810000 |
| Type | IE-M12-PCBCE |
| GTIN (EAN) | 4032248658190 |
| Qty. | 60 items |

IE-M12-PCBCE

Weidmüller Interface GmbH & Co. KG
 Klingenbergstraße 26
 D-32758 Detmold
 Germany

www.weidmueller.com

Technical data

Approvals

| | |
|------|---------|
| ROHS | Conform |
|------|---------|

Dimensions and weights

| | |
|------------|---------|
| Net weight | 10.62 g |
|------------|---------|

Temperatures

| | | |
|--------------------------|-----------------------|----------------|
| Storage temperature | Operating temperature | -25 °C...85 °C |
| Installation temperature | | |

Environmental Product Compliance

| | |
|--------------------------------------|--------------------------------------|
| RoHS Compliance Status | Compliant with exemption |
| RoHS Exemption (if applicable/known) | 6c |
| REACH SVHC | Lead 7439-92-1 |
| SCIP | 3e8ceb07-2a6e-42e7-9cfb-aa443d2916b3 |

Technical data of PCB plug-in connector

| | | | |
|-------------------|--------------------------------|-----------------------|--------------------------------|
| Number of poles | 4 | Coding | D-coded |
| Protection degree | IP65 in acc. with DIN EN 60529 | Housing main material | CuZn, Polyamide, nickel-plated |
| Connection thread | M12 | | |

General Info

| | | | |
|-----------------|-----------------------|------------------------|--------------------------------|
| Number of poles | 4 | Connection 1 | M12 |
| Connection 2 | Solder connection | Description of article | Connection element |
| Composition | Reflow compatible | Housing main material | CuZn, Polyamide, nickel-plated |
| Category | Cat.5 (ISO/IEC 11801) | Connection thread | M12 |
| Shielding | 360° shield contact | Protection degree | IP65 in acc. with DIN EN 60529 |

Important note

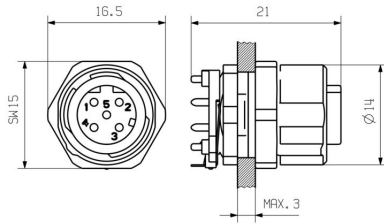
Notes

Classifications

| | | | |
|-------------|-------------|-------------|-------------|
| ETIM 8.0 | EC003568 | ETIM 9.0 | EC003568 |
| ETIM 10.0 | EC003568 | ECLASS 14.0 | 27-44-01-10 |
| ECLASS 15.0 | 27-44-01-10 | | |

Drawings

Dimensioned drawing



Dimensioned drawing

