

IE-M12-COUP

Weidmüller Interface GmbH & Co. KG
Klingenbergstraße 26
D-32758 Detmold
Germany

www.weidmueller.com



General ordering data

Version	Coupling, M12, M12, Cat.5 (ISO/IEC 11801), IP67
Order No.	8901640000
Type	IE-M12-COUP
GTIN (EAN)	4032248658206
Qty.	1 items

IE-M12-COUP

Weidmüller Interface GmbH & Co. KG

Klingenbergstraße 26

D-32758 Detmold

Germany

www.weidmueller.com

Technical data

Approvals

ROHS Conform

Dimensions and weights

Net weight 36 g

Temperatures

Storage temperature	Operating temperature	-40 °C...105 °C
Installation temperature		

Environmental Product Compliance

RoHS Compliance Status	Compliant with exemption
RoHS Exemption (if applicable/known)	6c
REACH SVHC	Lead 7439-92-1
SCIP	d1193a9e-dc7c-484a-ba48-176711eb392b

Technical data customisable plug-in connectors

Number of poles	4	Coding	D
Housing main material	Fiberglass-reinforced polyamide, Brass, nickel-plated	Insulation resistance	100 MΩ
Category	Cat.5 (ISO/IEC 11801)	Protection degree	IP67
Plugging cycles	≥ 100		

General Info

Number of poles	4	Connection 1	M12
Connection 2	M12	Description of article	Coupling
Composition	M12 socket to M12 socket	Housing main material	Fiberglass-reinforced polyamide, Brass, nickel-plated
Category	Cat.5 (ISO/IEC 11801)	Connection thread	M12
Shielding	360°; shield contact	Protection degree	IP67
Plugging cycles	≥ 100		

Electrical properties

Dielectric strength, contact / shield	≥ 1000 V AC/DC	Dielectric strength, contact / contact	≥ 1000 V AC/DC
Insulation resistance	100 MΩ		

Standards

Connector standard IEC 61076-2-101

General technical specifications

Number of poles	4	Coding	D
Connection thread	M12	Housing main material	Fiberglass-reinforced polyamide, Brass, nickel-plated
Insulation resistance	100 MΩ	Protection degree	IP67
Plugging cycles	≥ 100		

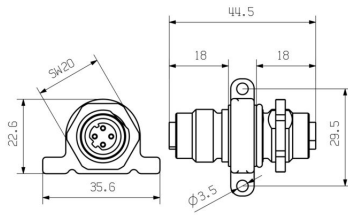
Technical data

Classifications

ETIM 8.0	EC000313	ETIM 9.0	EC000313
ETIM 10.0	EC000313	ECLASS 14.0	27-44-03-20
ECLASS 15.0	27-44-03-20		

Drawings

Dimensioned drawing



Dimensioned drawing

