

IE-XM-6U-RJ45/RJ45-IP67

Weidmüller Interface GmbH & Co. KG
Klingenbergstraße 26
D-32758 Detmold
Germany

www.weidmueller.com



SnapIn plug-in connectors according to IEC 61076-3-106
ver.6 in plastic, with RJ45 insert

General ordering data

Version	Mounting flange, Coupling flange, 90° up, Cat.6 (ISO/IEC 11801), IP67
Order No.	8829440000
Type	IE-XM-6U-RJ45/RJ45-IP67
GTIN (EAN)	4032248532469
Qty.	1 items

IE-XM-6U-RJ45/RJ45-IP67

Weidmüller Interface GmbH & Co. KG
Klingenbergstraße 26
D-32758 Detmold
Germany

www.weidmueller.com

Technical data

Approvals

Approvals



ROHS Conform

Dimensions and weights

Net weight 50 g

Temperatures

Storage temperature Operating temperature -40 °C...70 °C
Installation temperature

Environmental Product Compliance

RoHS Compliance Status Compliant without exemption
REACH SVHC No SVHC above 0.1 wt%

General data

Connection 1	RJ45	Connection 2	RJ45 90°;
Description of article	Coupling flange, 90° up	Composition	Installation flange with mounting frame and RJ45 module, socket-socket 90°, upwards captive lid
Colour	Light Grey	Housing main material	PA 66, UL 94: V-0
Category	Cat.6 (ISO/IEC 11801)	Contact surface	Gold over nickel
Type of mounting	Cabinet, Distribution box	Shielding	360°; shield contact
Protection degree	IP67	Plugging cycles	750

Electrical properties

Dielectric strength, contact / shield ≥ 1500 V AC/DC Dielectric strength, contact / contact ≥ 1000 V AC/DC

General standards

Certificate No. (DNV) TAE00003EW Connector standard IEC 61076-3-106 Var. 6, IEC 60603-7-5

Classifications

ETIM 8.0	EC001121	ETIM 9.0	EC001121
ETIM 10.0	EC001121	ECLASS 14.0	27-44-03-90
ECLASS 15.0	27-44-03-90		

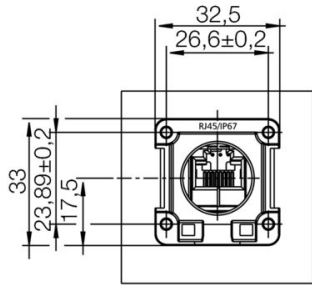
IE-XM-6U-RJ45/RJ45-IP67

Weidmüller Interface GmbH & Co. KG
Klingenbergstraße 26
D-32758 Detmold
Germany

Drawings

www.weidmueller.com

Dimensioned drawing



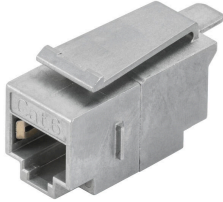
IE-XM-6U-RJ45/RJ45-IP67

Weidmüller Interface GmbH & Co. KG
Klingenbergstraße 26
D-32758 Detmold
Germany

www.weidmueller.com

Accessories

RJ45 coupling / module



IE plug-in connectors, IP20, for copper and fibre optic cables

General ordering data

Type	IE-XRJ45/IDC	Version	
Order No.	8808330000	Flange insert, Cat.6A / Class EA (ISO/IEC 11801 2010), IP20	
GTIN (EAN)	4032248505913		
Qty.	1 ST		