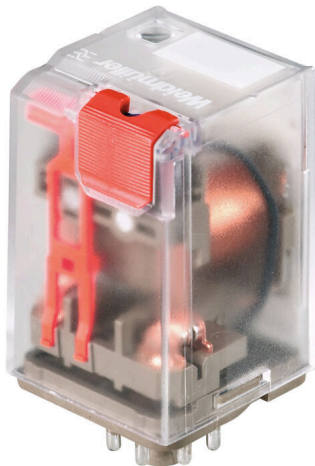


RRD3211B0

Weidmüller Interface GmbH & Co. KG
 Klingenbergstraße 26
 D-32758 Detmold
 Germany

www.weidmueller.com

Product image



Similar to illustration

General ordering data

| | |
|---------------------|--|
| Version | RIDERSERIES RRD, Relay, Number of contacts: 3, CO contact with test button AgNi, Rated control voltage: 110 V DC, Continuous current: 10 A, Plug-in connection, Test button available: Yes |
| Order No. | 8797640000 |
| Type | RRD3211B0 |
| GTIN (EAN) | 4032248491667 |
| Qty. | 25 items |
| Delivery status | Discontinued |
| Available until | 2022-03-10T00:00:00+01:00 |
| Alternative product | DRR373110L |

RRD3211B0

Weidmüller Interface GmbH & Co. KG

Klingenbergstraße 26

D-32758 Detmold

Germany

www.weidmueller.com

Technical data

Approvals

Approvals



ROHS Conform

UL File Number Search [UL Website](#)

Certificate No. (cURus) E522350

Dimensions and weights

| | | | |
|------------|---------|-----------------|-------------|
| Depth | 57 mm | Depth (inches) | 2.2441 inch |
| Height | 35.5 mm | Height (inches) | 1.3976 inch |
| Width | 35.5 mm | Width (inches) | 1.3976 inch |
| Net weight | 82.56 g | | |

Temperatures

| | | | |
|---------------------|--|-----------------------|----------------|
| Storage temperature | -40 °C...60 °C | Operating temperature | -40 °C...60 °C |
| Humidity | 40 °C / 93 % rel. humidity, no condensation | | |

Environmental Product Compliance

| | |
|------------------------|-----------------------|
| RoHS Compliance Status | Compliant |
| REACH SVHC | No SVHC above 0.1 wt% |

Rated data UL

| | |
|-------------------------|---------|
| Certificate No. (cURus) | E522350 |
|-------------------------|---------|

Control side

| | | | |
|-----------------------|---------------------|------------------|----------------|
| Rated control voltage | 110 V DC | Rated current DC | 11 mA |
| Power rating | 1.2 W | Coil resistance | 10000 Ω ± 12 % |
| Protective circuit | Free-wheeling diode | | |

Load side

| | | | |
|---|---|---|---------------------------------------|
| Rated switching voltage | 240 V AC | Continuous current | 10 A |
| Max. switching frequency at rated load | 0.1 Hz | Inrush current | 20 A / 20 ms |
| AC switching capacity (resistive), max. | 2500 VA | DC switching capacity (resistive), max. | 240 W @ 24 V |
| Switch-on delay | ≤ 15 ms | Switch-off delay | ≤ 30 ms |
| Contact type | 3 CO contact with test button (AgNi) | Mechanical service life | 20 x 10 ⁶ switching cycles |
| Min. switching power | 1 mA @ 24 V, 10 mA @ 12 V, 100 mA @ 5 V | | |

General data

| | | | |
|--------------------------------------|-----|------------------------|-------------|
| Test button available | Yes | Version of test button | lockable |
| Mechanical switch position indicator | Yes | Colour | Transparent |
| UL 94 flammability rating | V-2 | | |

RRD3211B0

Weidmüller Interface GmbH & Co. KG
 Klingenbergstraße 26
 D-32758 Detmold
 Germany

www.weidmueller.com

Technical data

Insulation coordination

| | | | |
|---|--------------------|-------------------------------------|--------------------|
| Rated voltage | 250 V | Pollution severity | 2 |
| Surge voltage category | III | Insulating material group | IIIa |
| Creepage and clearance distance input – ≤ 3 mm output | | Dielectric strength, Input/Output | 2.5 kVeff / 1 Min. |
| Dielectric strength of neighbouring contacts | 2.5 kVeff / 1 Min. | Dielectric strength of open contact | 1.5 kVeff / 1 min. |
| Impulse withstand voltage | 2.5 kV (1.2/50 µs) | Protection degree | IP20 |

Further details of approvals / standards

| | | | |
|-------------------------|--------------------|-----------------------|----------------|
| Standards | IEC 61810-1, UL508 | Certificate No. (CSA) | 249409-2426937 |
| Certificate No. (cURus) | E522350 | | |

Connection data

| | |
|------------------------|--------------------|
| Wire connection method | Plug-in connection |
|------------------------|--------------------|

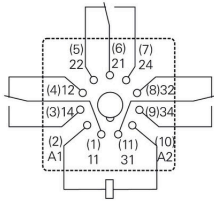
Classifications

| | | | |
|-------------|-------------|-------------|-------------|
| ETIM 8.0 | EC001437 | ETIM 9.0 | EC001437 |
| ETIM 10.0 | EC001437 | ECLASS 14.0 | 27-37-16-01 |
| ECLASS 15.0 | 27-37-16-01 | | |

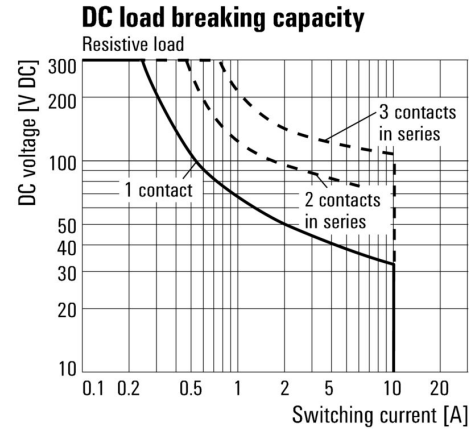
Drawings

Wiring diagram

Circuit diagram
View of connections

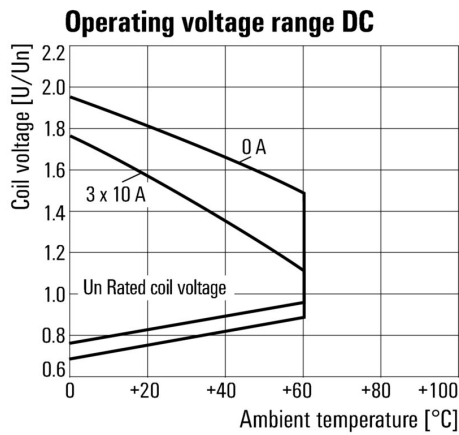


Graph



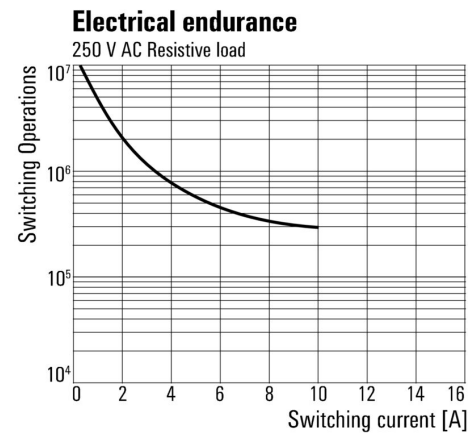
DC load limit curve Resistive load

Graph



DC operational voltage range

Graph



Electrical service life 250 V AC resistive load

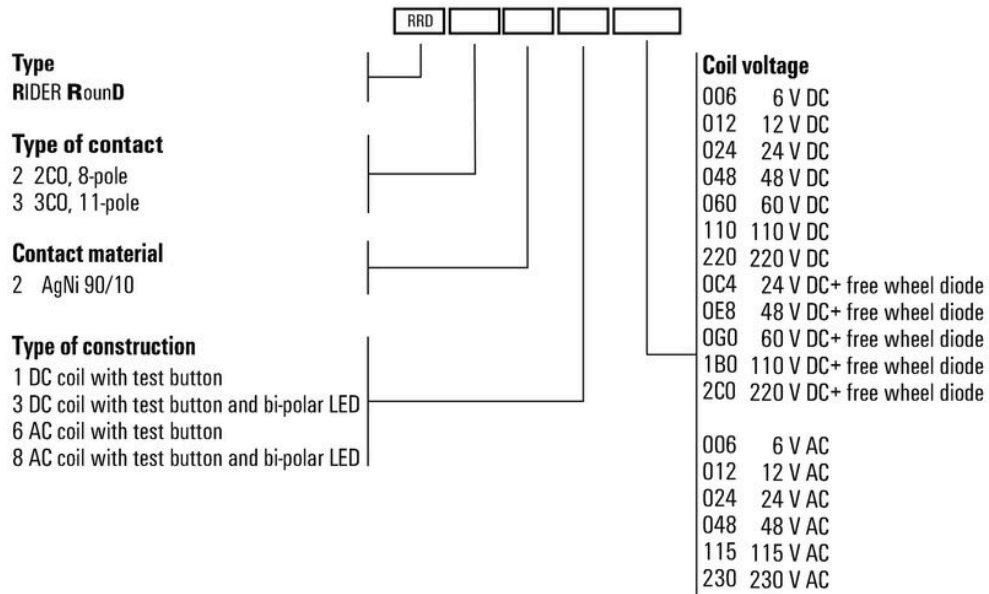
RRD3211B0

Weidmüller Interface GmbH & Co. KG
 Klingenbergstraße 26
 D-32758 Detmold
 Germany

Drawings

www.weidmueller.com

Miscellaneous



Type codes

RRD3211B0

Weidmüller Interface GmbH & Co. KG

Klingenbergstraße 26

D-32758 Detmold

Germany

www.weidmueller.com

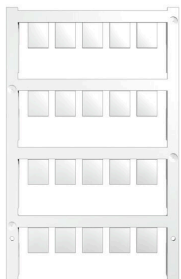
Accessories

RRD

General ordering data

| | | | |
|------------|----------------------------|---|--|
| Type | SRD-I 3CO | Version | |
| Order No. | 8869350000 | RIDERSERIES RRD, Relay socket, Number of contacts: 3, CO contact, | |
| GTIN (EAN) | 4032248614684 | Continuous current: 10 A, Screw connection | |
| Qty. | 25 ST | | |
| Type | SRD-I CLIP M | Version | |
| Order No. | 8869370000 | RIDERSERIES RRD, Retaining clip | |
| GTIN (EAN) | 4032248614707 | | |
| Qty. | 25 ST | | |

Blank



ESG is the tried-and-tested marker in MultiCard format for use on many well-known electrical devices. The result is high-quality device marking with a high-contrast appearance.

Various types are available for devices from manufacturers like Siemens, ABB, Beckhoff etc.

Advantages at a glance:

- Tags for universal usage, self-adhesive or clip-on tags, depending on type
- For aligned equipment, e.g. circuit breakers, we supply ESG markers for clipping onto tag rails
- Individual laser-quality printing according to specifications

For custom printing: Please send us a file of our labeling software M-Print PRO or M-Print PRO Online (without installation) for your labeling specifications.

General ordering data

| | | | |
|------------|----------------------------|---|--|
| Type | ESG 9/11 K MC NE WS | Version | |
| Order No. | 1857440000 | ESG, Device markers x 11 mm, PA 66, Colour: white, Self-adhesive | |
| GTIN (EAN) | 4032248402731 | | |
| Qty. | 200 ST | | |
| Type | ESG 6/15 K MC NE GE | Version | |
| Order No. | 1880130000 | ESG, Device markers x 15 mm, PA 66, Colour: yellow, Self-adhesive | |
| GTIN (EAN) | 4032248478910 | | |
| Qty. | 200 ST | | |
| Type | ESG 6/15 K MC NE WS | Version | |
| Order No. | 1880100000 | ESG, Device markers x 15 mm, PA 66, Colour: white, Self-adhesive | |
| GTIN (EAN) | 4032248478781 | | |
| Qty. | 200 ST | | |

RRD3211B0

Weidmüller Interface GmbH & Co. KG
 Klingenbergstraße 26
 D-32758 Detmold
 Germany

www.weidmueller.com

Accessories

| | | |
|------------|----------------------------|---|
| Type | ESG 6/17 K MC NE GE | Version |
| Order No. | 1880110000 | ESG, Device markers x 17 mm, PA 66, Colour: yellow, Self-adhesive |
| GTIN (EAN) | 4032248478798 | |
| Qty. | 200 ST | |
| Type | ESG 6/17 K MC NE WS | Version |
| Order No. | 1880120000 | ESG, Device markers x 17 mm, PA 66, Colour: white, Self-adhesive |
| GTIN (EAN) | 4032248478804 | |
| Qty. | 200 ST | |

ESG 6/15



Guaranteed long service life: ESG

The multi-colour and multi-format labels have a strong adhesive layer to ensure the best possible adhesion to the underlying surface. Double laminated polyester makes the basic material very thin and yet extremely tear-resistant. Your benefits with MultiMark

- "Different materials for various requirements"
- Can be used with equipment from many manufacturers
- Device markers with a familiar design

General ordering data

| | | |
|------------|----------------------------|---------------------------------------|
| Type | ESG 6/15 MM WS | Version |
| Order No. | 2619940000 | ESG, Device markers, 6 x 15 mm, white |
| GTIN (EAN) | 4050118626148 | |
| Qty. | 3000 ST | |

ESG 6/17



Guaranteed long service life: ESG

The multi-colour and multi-format labels have a strong adhesive layer to ensure the best possible adhesion to the underlying surface. Double laminated polyester makes the basic material very thin and yet extremely tear-resistant. Your benefits with MultiMark

- "Different materials for various requirements"
- Can be used with equipment from many manufacturers
- Device markers with a familiar design

General ordering data

| | | |
|------------|----------------------------|---------------------------------------|
| Type | ESG 6/17 MM WS | Version |
| Order No. | 2005100000 | ESG, Device markers, 6 x 17 mm, white |
| GTIN (EAN) | 4050118390728 | |
| Qty. | 3000 ST | |

RRD3211B0

Weidmüller Interface GmbH & Co. KG
Klingenbergstraße 26
D-32758 Detmold
Germany

www.weidmueller.com

Counterpart

RRD

General ordering data

| | | | |
|------------|----------------------------|---|--|
| Type | SRD-I 3CO | Version | |
| Order No. | 8869350000 | RIDERSERIES RRD, Relay socket, Number of contacts: 3, CO contact, | |
| GTIN (EAN) | 4032248614684 | Continuous current: 10 A, Screw connection | |
| Qty. | 25 ST | | |