



## PAS CMR 0,5...2,5 A DC

Weidmüller Interface GmbH & Co. KG  
Klingenbergstraße 26  
D-32758 Detmold  
Germany

www.weidmueller.com

## Technical data

## Approvals

Approvals



ROHS Conform

UL File Number Search [UL Website](#)

Certificate no. (cULus) E141197

## Dimensions and weights

Depth	95 mm	Depth (inches)	3.7401 inch
Height	16 mm	Height (inches)	0.6299 inch
Width	15.3 mm	Width (inches)	0.6024 inch
Length	92 mm	Length (inches)	3.622 inch
Net weight	69.6 g		

## Temperatures

Storage temperature	-40 °C...85 °C	Operating temperature	-40 °C...60 °C
Humidity at operating temperature	0...95 % (no condensation)	Humidity	5-95% relative humidity, Tu = 40°C, without condensation

## Probability of failure

SIL in compliance with IEC 61508 None

## Environmental Product Compliance

RoHS Compliance Status Compliant  
REACH SVHC No SVHC above 0.1 wt%

## General data

Protection degree	IP20	Mounting rail	TS 35
Temperature coefficient	350 ppm/K	Nominal power consumption	1.5 VA
Configuration	none		

## Insulation coordination

Impulse withstand voltage	6 kV	EMC standards	EN 55011, EN 61000-6-1, 2, 3, 4
Surge voltage category	III	Pollution severity	2
Galvanic isolation	between input / output / supply / relay	Insulation voltage	4 kVeff / 1 min.
Rated voltage	300 V		

## Input

Making current threshold	≤ 500 mA	Secure off	≤ 50 mA
Input current	0.5...2.5 A DC	Input resistance, current	<50 mΩ
Pulse duration	min. 1 ms	Max. current	7.5 A for 10 s

## PAS CMR 0,5...2,5 A DC

**Weidmüller Interface GmbH & Co. KG**  
 Klingenbergstraße 26  
 D-32758 Detmold  
 Germany

[www.weidmueller.com](http://www.weidmueller.com)

## Technical data

### Output

Number of outputs	1	Continuous current	100 mA
Contact material	RH/Rd (Reed contact)*	Max. switching voltage, AC	250 V
Switching voltage AC, min.	1 V	Max. switching voltage, DC	100 V
Switching voltage DC, min.	1 V	Contact assembly	1 NO contact
Max. switching frequency	20 Hz	Temperature coefficient	350 ppm/K
Switching current	2 A		

### Connection data

Type of connection	Screw connection	Clamping range, rated connection	1.5 mm <sup>2</sup>
Clamping range, min.	2.5 mm <sup>2</sup>	Clamping range, max.	2.5 mm <sup>2</sup>

### Classifications

ETIM 8.0	EC002654	ETIM 9.0	EC002654
ETIM 10.0	EC002654	ECLASS 14.0	27-21-01-22
ECLASS 15.0	27-21-01-22		

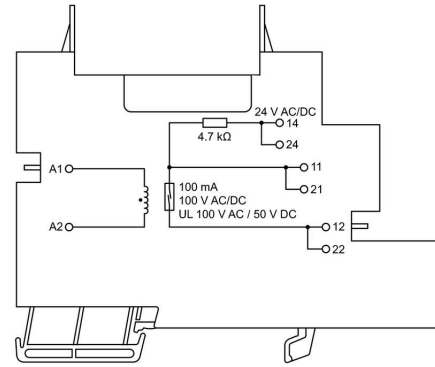
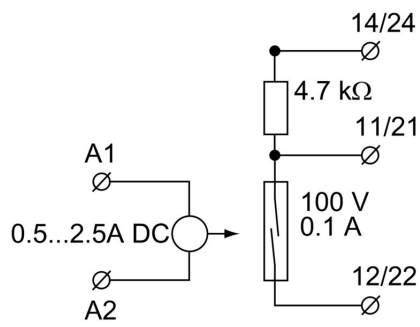
PAS CMR 0,5...2,5 A DC

Weidmüller Interface GmbH & Co. KG  
Klingenbergstraße 26  
D-32758 Detmold  
Germany

Drawings

www.weidmueller.com

Electric symbol



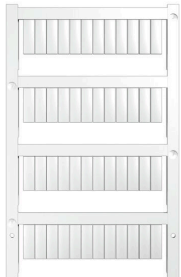
## PAS CMR 0,5...2,5 A DC

**Weidmüller Interface GmbH & Co. KG**  
 Klingenbergstraße 26  
 D-32758 Detmold  
 Germany

## Accessories

www.weidmueller.com

### Blank



WS markers are the perfect match for the W-series connectors. Thanks to their system compatibility, the WS tags can also be used with the I-series and the Z-series. The large marking surfaces do not only permit long character strings but also multi-line text. WS markers are ideal for labels with long, customised character strings. Thanks to the proven MultiCard format, printing with PrintJet CONNECT oder/or Plotter is possible.

- Can be fitted in strips or individually
- Markers in proven MultiCard format

For custom printing: Please send us a file of our labeling software M-Print PRO or M-Print PRO Online (without installation) for your labeling specifications.

### General ordering data

Type	WS 15/5 MC NE WS	Version
Order No.	<a href="#">1609880000</a>	WS, Terminal marker, 15 x 5 mm, Pitch in mm (P): 5.00 Weidmueller,
GTIN (EAN)	4008190203504	Allen-Bradley, white
Qty.	480 ST	
Type	WS 10/5 MC NE WS	Version
Order No.	<a href="#">1635000000</a>	WS, Terminal marker, 10 x 5 mm, Pitch in mm (P): 5.00 Weidmueller,
GTIN (EAN)	4008190261948	Allen-Bradley, white
Qty.	720 ST	

### PLUGSERIES

### General ordering data

Type	ZQV 2.5N 1/4-2 SW	Version
Order No.	<a href="#">1784270000</a>	PLUGSERIES, Cross-connector
GTIN (EAN)	4032248214679	
Qty.	60 ST	
Type	ZQV 2.5N 1/4-2 BL	Version
Order No.	<a href="#">1784290000</a>	PLUGSERIES, Cross-connector
GTIN (EAN)	4032248216383	
Qty.	60 ST	
Type	ZQV 2.5N 1/4-2 RT	Version
Order No.	<a href="#">1784280000</a>	PLUGSERIES, Cross-connector
GTIN (EAN)	4032248214686	
Qty.	60 ST	

## PAS CMR 0,5...2,5 A DC

**Weidmüller Interface GmbH & Co. KG**  
Klingenbergstraße 26  
D-32758 Detmold  
Germany

[www.weidmueller.com](http://www.weidmueller.com)

## Accessories

Type	PRC HALTEBUEGEL	Version	
Order No.	<a href="#">8536700000</a>	PLUGSERIES, Retaining clip	
GTIN (EAN)	4032248171965		
Qty.	100 ST		