

**RIM 4 24/60VUC GN**

**Weidmüller Interface GmbH & Co. KG**  
 Klingenbergstraße 26  
 D-32758 Detmold  
 Germany

www.weidmueller.com

**Product image**



Similar to illustration

**General ordering data**

Version	RIDERSERIES RCL, LED module, Protective varistor, Rated control voltage: 24...60 V UC, Plug-in connection
Order No.	<a href="#">8713790000</a>
Type	RIM 4 24/60VUC GN
GTIN (EAN)	4032248390168
Qty.	10 items
Delivery status	This article will no longer be available in the future.
Available until	2026-03-30T00:00:00+02:00

## RIM 4 24/60VUC GN

**Weidmüller Interface GmbH & Co. KG**  
 Klingenbergstraße 26  
 D-32758 Detmold  
 Germany

www.weidmueller.com

## Technical data

### Approvals

Approvals



ROHS Conform  
 UL File Number Search [UL Website](#)  
 Certificate No. (cURus) E223759

### Dimensions and weights

Depth	34.5 mm	Depth (inches)	1.3583 inch
Height	9 mm	Height (inches)	0.3543 inch
Width	12.5 mm	Width (inches)	0.4921 inch
Net weight	3 g		

### Temperatures

Storage temperature	-40 °C...70 °C	Operating temperature	-40 °C...70 °C
Humidity	40 °C / 93 % rel. humidity, no condensation		

### Environmental Product Compliance

RoHS Compliance Status	Compliant with exemption		
RoHS Exemption (if applicable/known)	7a, 7cl		
REACH SVHC	Lead 7439-92-1		
SCIP	2f8197d4-bb8c-4bf4-a0f8-f906b0694c85		

### Rated data UL

Certificate No. (cURus)	E223759
-------------------------	---------

### Control side

Rated control voltage	24...60 V UC	Status indicator	Green LED
Protective circuit	Varistor		

### General data

Colour	black
--------	-------

### Further details of approvals / standards

Standards	UL508	Certificate No. (cURus)	E223759
-----------	-------	-------------------------	---------

### Connection data

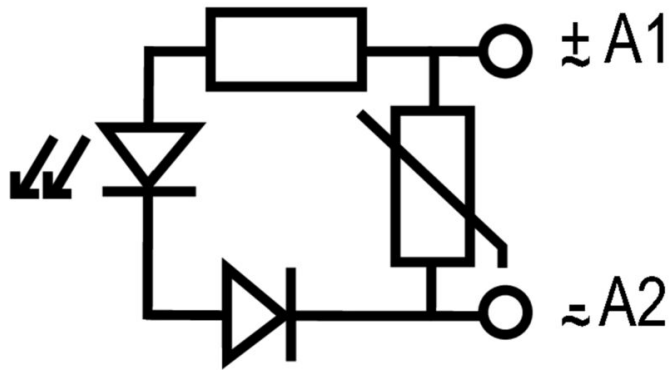
Wire connection method	Plug-in connection
------------------------	--------------------

### Classifications

ETIM 8.0	EC002586	ETIM 9.0	EC002586
ETIM 10.0	EC002586	ECLASS 14.0	27-37-16-92
ECLASS 15.0	27-37-16-92		

Drawings

Wiring diagram



Dimensional drawing

