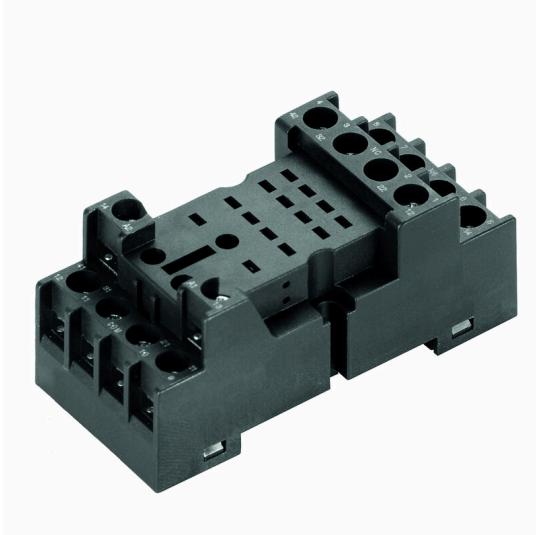


SCM 4CO N**Weidmüller Interface GmbH & Co. KG**

Klingenbergstraße 26

D-32758 Detmold

Germany

www.weidmueller.com**Product image****General ordering data**

Version	RIDERSERIES RCM, Relay socket, Number of contacts: 4, CO contact, Continuous current: 10 A, Screw connection
Order No.	8694500000
Type	SCM 4CO N
GTIN (EAN)	4032248366248
Qty.	10 items
Delivery status	This article will no longer be available in the future.
Available until	2026-03-31T00:00:00+02:00
Alternative product	CSM S 4CO

SCM 4CO N

Weidmüller Interface GmbH & Co. KG

Klingenbergstraße 26

D-32758 Detmold

Germany

www.weidmueller.com

Technical data

Approvals

Approvals



ROHS Conform

UL File Number Search [UL Website](#)

Certificate No. (cURus) E223759

Dimensions and weights

Depth	42 mm	Depth (inches)	1.6535 inch
Height	77 mm	Height (inches)	3.0315 inch
Width	27 mm	Width (inches)	1.063 inch
Net weight	48.96 g		

Temperatures

Storage temperature	-40 °C...70 °C	Ambient temperature	-45 °C...70 °C
Operating temperature		Humidity	40 °C / 93 % rel. humidity, no condensation

Environmental Product Compliance

RoHS Compliance Status	Compliant without exemption
REACH SVHC	No SVHC above 0.1 wt%

Rated data UL

Certificate No. (cURus) E223759

Load side

Rated switching voltage	250 V AC	Continuous current	10 A
Max. switching voltage, AC	300 V	AC switching capacity (resistive), max.	2500 VA
Contact type	4 CO contact		

General data

Mounting rail	TS 35	Colour	black
---------------	-------	--------	-------

Insulation coordination

Dielectric strength, Input/Output	2.5 kVeff / 1 Min.	Protection degree	IP20
-----------------------------------	--------------------	-------------------	------

Further details of approvals / standards

Standards	UL508	Certificate No. (cURus)	E223759
-----------	-------	-------------------------	---------

Connection data

Wire connection method	Screw connection	Tightening torque, min.	0.5 Nm
Tightening torque, max.	0.7 Nm	Clamping range, rated connection	2.5 mm ²
Clamping range, min.	0.5 mm ²	Clamping range, max.	2.5 mm ²
Blade size	size PH1		

Technical data

Classifications

ETIM 8.0	EC001456	ETIM 9.0	EC001456
ETIM 10.0	EC001456	ECLASS 14.0	27-37-16-03
ECLASS 15.0	27-37-16-03		