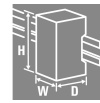
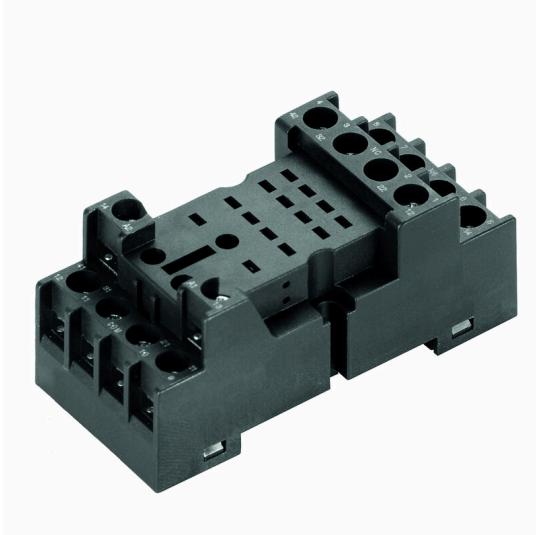


SCM 4CO N**Weidmüller Interface GmbH & Co. KG**

Klingenbergstraße 26

D-32758 Detmold

Germany

www.weidmueller.com**Product image****General ordering data**

Version	RIDERSERIES RCM, Relay socket, Number of contacts: 4, CO contact, Continuous current: 10 A, Screw connection
Order No.	8694500000
Type	SCM 4CO N
GTIN (EAN)	4032248366248
Qty.	10 items
Delivery status	This article will no longer be available in the future.
Last order date	2026-03-31T00:00:00+02:00
Alternative product	CSM S 4CO

SCM 4CO N

Weidmüller Interface GmbH & Co. KG

Klingenbergstraße 26

D-32758 Detmold

Germany

www.weidmueller.com

Technical data

Approvals

Approvals



ROHS Conform

UL File Number Search [UL Website](#)

Certificate No. (cURus) E223759

Dimensions and weights

Depth	42 mm	Depth (inches)	1.6535 inch
Height	77 mm	Height (inches)	3.0315 inch
Width	27 mm	Width (inches)	1.063 inch
Net weight	48.96 g		

Temperatures

Storage temperature	-40 °C...70 °C	Ambient temperature	-45 °C...70 °C
Operating temperature		Humidity	40 °C / 93 % rel. humidity, no condensation

Environmental Product Compliance

RoHS Compliance Status	Compliant without exemption
REACH SVHC	No SVHC above 0.1 wt%

Rated data UL

Certificate No. (cURus) E223759

Load side

Rated switching voltage	250 V AC	Continuous current	10 A
Max. switching voltage, AC	300 V	AC switching capacity (resistive), max.	2500 VA
Contact type	4 CO contact		

General data

Mounting rail	TS 35	Colour	black
---------------	-------	--------	-------

Insulation coordination

Dielectric strength, Input/Output	2.5 kVeff / 1 Min.	Protection degree	IP20
-----------------------------------	--------------------	-------------------	------

Further details of approvals / standards

Standards	UL508	Certificate No. (cURus)	E223759
-----------	-------	-------------------------	---------

Connection data

Wire connection method	Screw connection	Tightening torque, min.	0.5 Nm
Tightening torque, max.	0.7 Nm	Clamping range, rated connection	2.5 mm ²
Clamping range, min.	0.5 mm ²	Clamping range, max.	2.5 mm ²
Blade size	size PH1		

Technical data

Classifications

ETIM 8.0	EC001456	ETIM 9.0	EC001456
ETIM 10.0	EC001456	ECLASS 14.0	27-37-16-03
ECLASS 15.0	27-37-16-03		

SCM 4CO N

Weidmüller Interface GmbH & Co. KG
 Klingenbergstraße 26
 D-32758 Detmold
 Germany

Accessories

www.weidmueller.com

RCL

General ordering data

Type	RIM 3 110/230VUC	Version
Order No.	8691030000	RIDERSERIES RCL, LED module, Rated control voltage: 110...230 V
GTIN (EAN)	4032248361717	UC, Plug-in connection
Qty.	10 ST	
Type	RIM 3 110/230VUC GN	Version
Order No.	8713770000	RIDERSERIES RCL, LED module, Rated control voltage: 110...230 V
GTIN (EAN)	4032248390144	UC, Plug-in connection
Qty.	10 ST	
Type	RIM 3 24/60VUC	Version
Order No.	8691020000	RIDERSERIES RCL, LED module, Rated control voltage: 24...60 V UC,
GTIN (EAN)	4032248361700	Plug-in connection
Qty.	10 ST	
Type	RIM 3 24/60VUC GN	Version
Order No.	8713760000	RIDERSERIES RCL, LED module, Rated control voltage: 24...60 V UC,
GTIN (EAN)	4032248390137	Plug-in connection
Qty.	10 ST	
Type	RIM 3 6/24VUC GN	Version
Order No.	8713750000	RIDERSERIES RCL, LED module, Rated control voltage: 6...24 V UC,
GTIN (EAN)	4032248390120	Plug-in connection
Qty.	10 ST	
Type	RIM 2 24/60VDC	Version
Order No.	8690960000	RIDERSERIES RCL, LED module with freewheel diode, Rated control
GTIN (EAN)	4032248361649	voltage: 24...60 V DC, Plug-in connection
Qty.	10 ST	
Type	RIM 2 24/60VDC GN	Version
Order No.	8713730000	RIDERSERIES RCL, LED module with freewheel diode, Rated control
GTIN (EAN)	4032248389889	voltage: 24...60 V DC, Plug-in connection
Qty.	10 ST	
Type	RIM 2 6/24VDC	Version
Order No.	8690950000	RIDERSERIES RCL, LED module with freewheel diode, Rated control
GTIN (EAN)	4032248361632	voltage: 6...24 V DC, Plug-in connection
Qty.	10 ST	

SCM 4CO N

Weidmüller Interface GmbH & Co. KG

Klingenbergstraße 26

D-32758 Detmold

Germany

www.weidmueller.com

Accessories

Individual components



Relay modules with forcibly guided contacts
 Relays with forcibly guided contacts have a 99 % diagnostics coverage and an excellent reputation for use in safety systems. The contacts interlock mechanically with each other in order to ensure a synchronous switching status of both contacts. This guarantees that the alert contact will maintain the same switching status in the event of an error (for example, if the working contact welds from an overload). The controller (or safety controller) detects the alert contact and then compares the set values and actual values. If a difference occurs, measures can then be taken to protect equipment and human life.

- 2 CO contacts with 6 A, forcibly guided according to EN 61810-3 type B
- Proven component in safety technology
- Diagnosis coverage of 99 %

General ordering data

Type	RIM 2 6/24VDC GN	Version	
Order No.	8713720000	RIDERSERIES FG, LED module with freewheel diode, Rated control	
GTIN (EAN)	4032248389872	voltage: 6...24 V DC, Plug-in connection	
Qty.	10 ST		

RCL

General ordering data

Type	RIM 4 110/230VUC	Version	
Order No.	8691060000	RIDERSERIES RCL, LED module, Protective varistor, Rated control	
GTIN (EAN)	4032248361748	voltage: 110...230 V UC, Plug-in connection	
Qty.	10 ST		
Type	RIM 4 110/230VUC GN	Version	
Order No.	8713800000	RIDERSERIES RCL, LED module, Protective varistor, Rated control	
GTIN (EAN)	4032248390182	voltage: 110...230 V UC, Plug-in connection	
Qty.	10 ST		
Type	RIM 4 24/60VUC GN	Version	
Order No.	8713790000	RIDERSERIES RCL, LED module, Protective varistor, Rated control	
GTIN (EAN)	4032248390168	voltage: 24...60 V UC, Plug-in connection	
Qty.	10 ST		
Type	RIM 4 6/24VUC	Version	
Order No.	8691040000	RIDERSERIES RCL, LED module, Protective varistor, Rated control	
GTIN (EAN)	4032248361724	voltage: 6...24 V UC, Plug-in connection	
Qty.	10 ST		

SCM 4CO N

Weidmüller Interface GmbH & Co. KG
 Klingenbergstraße 26
 D-32758 Detmold
 Germany

www.weidmueller.com

Accessories

Type	RIM 4 6/24VUC GN	Version
Order No.	8713780000	RIDERSERIES RCL, LED module, Protective varistor, Rated control
GTIN (EAN)	4032248390151	voltage: 6...24 V UC, Plug-in connection
Qty.	10 ST	
Type	RIM 1 6/230V	Version
Order No.	8690940000	RIDERSERIES RCL, Free-wheeling diode, Rated control voltage: 6...
GTIN (EAN)	4032248361601	230 V, Plug-in connection
Qty.	10 ST	
Type	RIM 3 110/230VAC	Version
Order No.	8691000000	RIDERSERIES RCL, RC filter, Rated control voltage: 110...230 V AC,
GTIN (EAN)	4032248361687	Plug-in connection
Qty.	10 ST	

RCM

General ordering data

Type	SCM CLIP P	Version
Order No.	8691110000	RIDERSERIES RCM, Retaining clip
GTIN (EAN)	4032248361816	
Qty.	10 ST	
Type	SCM CLIP M	Version
Order No.	8691100000	RIDERSERIES RCM, Retaining clip
GTIN (EAN)	4032248361809	
Qty.	10 ST	