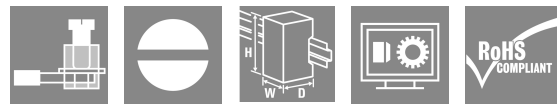
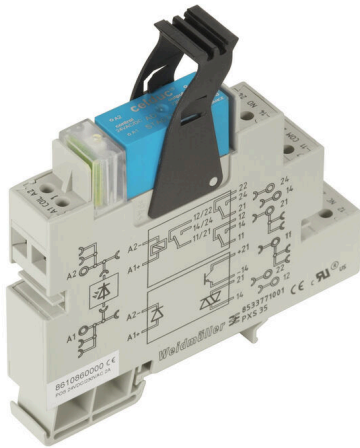


POS 24VDC/230VAC 2A

Weidmüller Interface GmbH & Co. KG
 Klingenbergstraße 26
 D-32758 Detmold
 Germany

www.weidmueller.com



General ordering data

Version	PLUGSERIES, Solid-state relay, Rated control voltage: 15 V DC...30 V DC , Rated switching voltage: 12...275 V AC, Continuous current: 2 A, Screw connection
Order No.	8610860000
Type	POS 24VDC/230VAC 2A
GTIN (EAN)	4032248271474
Qty.	10 items
Delivery status	Discontinued
Available until	2016-06-30T00:00:00+02:00
Alternative product	TOS 24VDC 230VAC1A

POS 24VDC/230VAC 2A

Weidmüller Interface GmbH & Co. KG
Klingenbergstraße 26
D-32758 Detmold
Germany

www.weidmueller.com

Technical data

Approvals

Approvals



ROHS Conform

Dimensions and weights

Depth	95 mm	Depth (inches)	3.7401 inch
Height	92 mm	Height (inches)	3.622 inch
Width	15.3 mm	Width (inches)	0.6024 inch
Net weight	70.5 g		

Temperatures

Storage temperature	-40 °C...50 °C	Operating temperature	-40 °C...50
Humidity	40 °C / 93 % rel. humidity, no condensation		

Probability of failure

MTTF 316 a

Environmental Product Compliance

RoHS Compliance Status	Compliant
REACH SVHC	No SVHC above 0.1 wt%

Control side

Rated control voltage	15 V DC...30 V DC	Nominal control current	15 mA DC (±10%)
Power rating	360 mW	Status indicator	Green LED
Protective circuit	Free-wheeling diode		

Load side

Rated switching voltage	12...275 V AC	Continuous current	2 A
Rated switching current	2 A	Switch-on delay	≤ 12 ms
Switch-off delay	20 ms	Voltage drop at max. load	≤ 1 V
Leakage current	< 1 mA	Short-circuit-proof	No
Contact type	1 NO contact (Triac (zero-cross switch))		

General data

Mounting rail	TS 35	Colour	beige
---------------	-------	--------	-------

Insulation coordination

Rated voltage	300 V	Pollution severity	2
Surge voltage category	III	Clearance and creepage distances for control side - load side	> 8 mm
Impulse withstand voltage	4 kV (1.2/50 µs)	Protection degree	IP20

POS 24VDC/230VAC 2A

Weidmüller Interface GmbH & Co. KG
Klingenbergstraße 26
D-32758 Detmold
Germany

www.weidmueller.com

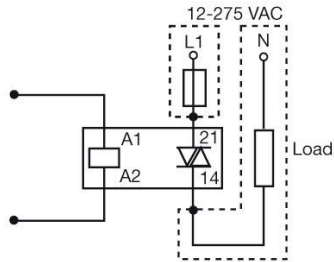
Technical data**Connection data**

Wire connection method	Screw connection	Stripping length, rated connection	8 mm
Tightening torque, max.	0.7 Nm	Clamping range, rated connection	2.5 mm ²
Clamping range, min.	0.5 mm ²	Clamping range, max.	2.5 mm ²

Classifications

ETIM 8.0	EC001504	ETIM 9.0	EC001504
ETIM 10.0	EC001504	ECLASS 14.0	27-37-16-04
ECLASS 15.0	27-37-16-04		

Wiring diagram



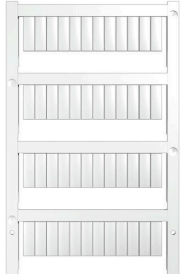
POS 24VDC/230VAC 2A

Weidmüller Interface GmbH & Co. KG
 Klingenbergstraße 26
 D-32758 Detmold
 Germany

Accessories

www.weidmueller.com

Blank



WS markers are the perfect match for the W-series connectors. Thanks to their system compatibility, the WS tags can also be used with the I-series and the Z-series. The large marking surfaces do not only permit long character strings but also multi-line text. WS markers are ideal for labels with long, customised character strings. Thanks to the proven MultiCard format, printing with PrintJet CONNECT oder/or Plotter is possible.

- Can be fitted in strips or individually
- Markers in proven MultiCard format

For custom printing: Please send us a file of our labeling software M-Print PRO or M-Print PRO Online (without installation) for your labeling specifications.

General ordering data

Type	WS 15/5 MC NE WS	Version
Order No.	1609880000	WS, Terminal marker, 15 x 5 mm, Pitch in mm (P): 5.00 Weidmueller,
GTIN (EAN)	4008190203504	Allen-Bradley, white
Qty.	480 ST	
Type	WS 10/5 MC NE WS	Version
Order No.	1635000000	WS, Terminal marker, 10 x 5 mm, Pitch in mm (P): 5.00 Weidmueller,
GTIN (EAN)	4008190261948	Allen-Bradley, white
Qty.	720 ST	

PLUGSERIES

General ordering data

Type	ZQV 2.5N 1/4-2 SW	Version
Order No.	1784270000	PLUGSERIES, Cross-connector
GTIN (EAN)	4032248214679	
Qty.	60 ST	
Type	ZQV 2.5N 1/4-2 BL	Version
Order No.	1784290000	PLUGSERIES, Cross-connector
GTIN (EAN)	4032248216383	
Qty.	60 ST	
Type	ZQV 2.5N 1/4-2 RT	Version
Order No.	1784280000	PLUGSERIES, Cross-connector
GTIN (EAN)	4032248214686	
Qty.	60 ST	

POS 24VDC/230VAC 2A

Weidmüller Interface GmbH & Co. KG
Klingenbergstraße 26
D-32758 Detmold
Germany

www.weidmueller.com

Accessories

Type	PLED 24VDC	Version
Order No.	8536710000	PLUGSERIES, LED module, Plug-in connection
GTIN (EAN)	4032248171972	
Qty.	20 ST	
Type	PRC HALTEBUEGEL	Version
Order No.	8536700000	PLUGSERIES, Retaining clip
GTIN (EAN)	4032248171965	
Qty.	100 ST	