

**WAS4 PRO DC/DC**

**Weidmüller Interface GmbH & Co. KG**  
Klingenbergstraße 26  
D-32758 Detmold  
Germany

[www.weidmueller.com](http://www.weidmueller.com)

Product is no longer available, Data sheet for information only

**General ordering data**

Version	Signal converter/insulator, Screw connection
Order No.	<a href="#">8560740000</a>
Type	WAS4 PRO DC/DC
GTIN (EAN)	4032248207350
Qty.	1 items
Delivery status	This article will no longer be available in the future.
Available until	2022-03-30T00:00:00+02:00
Alternative product	<a href="#">ACT20P-PRO DCDC II-S</a>

## WAS4 PRO DC/DC

Weidmüller Interface GmbH &amp; Co. KG

Klingenbergstraße 26

D-32758 Detmold

Germany

www.weidmueller.com

## Technical data

## Approvals

Approvals



ROHS	Conform
UL File Number Search	<a href="#">UL Website</a>
Certificate no. (cULus)	E141197
Certificate no. (cULusEX)	E346097

## Dimensions and weights

Depth	112.4 mm	Depth (inches)	4.4252 inch
Width	12.5 mm	Width (inches)	0.4921 inch
Length	92.4 mm	Length (inches)	3.6378 inch
Net weight	132.2 g		

## Temperatures

Storage temperature	-40 °C...85 °C	Operating temperature	0 °C...70 °C
Humidity at operating temperature	0...95 % (no condensation)		

## Probability of failure

SIL in compliance with IEC 61508	None	MTBF	76 a
MTTF	76 a		

## Environmental Product Compliance

RoHS Compliance Status	Compliant
REACH SVHC	Lead 7439-92-1
SCIP	b25f3b7c-b874-4a4e-a8b2-4f423a7e2a65

## Input

Number inputs	1	Input voltage	configurable, $\pm 20$ mV... $\pm 200$ V
Input current	configurable, $\pm 0.1$ mA... $\pm 100$ mA	Input resistance, voltage	approx. 1 M $\Omega$
Input resistance, current	<5 mA: approx. 100 $\Omega$ ; >5 mA: approx. 5 $\Omega$		

## Output

Number of outputs	1	load impedance voltage	$\geq 1$ k $\Omega$
Load impedance current	$\leq 600$ $\Omega$	Offset voltage	10 mV
Offset current	20 $\mu$ A	Output voltage, note	0... $\pm 10$ V
Output current	0... $\pm 20$ mA	Cut-off frequency (-3 dB)	> 10 kHz/ <10 Hz

## General data

Accuracy	<0.1 % of end value, + Offset 0.1 %	Protection degree	IP20
Status indicator	Green LED	Supply voltage	22...230 V AC/DC +10 %
Step response time	120 $\mu$ s at limiting- frequency setting > 10	Mounting rail	TS 35

## WAS4 PRO DC/DC

**Weidmüller Interface GmbH & Co. KG**

Klingenbergstraße 26  
D-32758 Detmold  
Germany

www.weidmueller.com

## Technical data

	kHz, 75 ms at limiting-frequency setting <10 Hz		
Power consumption	ca. 1 W	Temperature coefficient	≤ 60 ppm/K of final value
Nominal power consumption	1.5 VA	Configuration	DIP switch and potentiometer, with reference voltage/current sources

### Insulation coordination

Impulse withstand voltage	5 kV, 1.2/50 µs (IEC 255-4)	EMC standards	DIN EN 61326, EN 61000-6 /-2, EN 61709 (SN 29500) MTBF
Surge voltage category	III	Pollution severity	2
Galvanic isolation	3-way isolator	Insulation voltage input or output/rail	4 kVeff
Insulation voltage input or output/supply	4 kVeff	Insulation voltage	4 kVeff
Rated voltage	600 V		

### Connection data

Type of connection	Screw connection	Stripping length, rated connection	7 mm
Tightening torque, min.	0.4 Nm	Tightening torque, max.	0.5 Nm
Clamping range, rated connection	2.5 mm <sup>2</sup>	Clamping range, min.	0.5 mm <sup>2</sup>
Clamping range, max.	2.5 mm <sup>2</sup>		

### Classifications

ETIM 8.0	EC002653	ETIM 9.0	EC002653
ETIM 10.0	EC002653	ECLASS 14.0	27-21-01-20
ECLASS 15.0	27-21-01-20		

### Tender specification sheets

Long specification	Standard signal isolating converter, Zero/span compensation, calibrated selection 1-channel signal isolating converter: with 12.5 mm width and external power supply for transmitting and isolating analogue DC current (± 0.1 to ± 100 mA) and voltage signals (± 20 mV to ± 200 V). Add-on housing for TS35 rail mounting Dimensions: L/W/H 92.4/12.5/ 112.4 mm Screw connection/ Nominal cross-section 2.5 mm <sup>2</sup> Protection degree: IP 20 Input +/- 20mV... +/- 200 V, +/- 0.1 mA... +/- 100 mA Output 0 ... +/- 10 V, 0... +/- 20 mA Selection range calibrated selection with DIP switches/ 440 ranges	Short specification	Standard signal isolating converter, Zero/span compensation, calibrated selection 1-channel signal isolating converter: with 12.5 mm width and external power supply for transmitting and isolating analogue DC current (± 0.1 to ± 100 mA) and voltage signals.
--------------------	---	---------------------	--

## Technical data

Front-side calibration zero/  
span potentiometer

Transmission error  
< 0,2% v. E.

Limit frequency 10 Hz /  
10 kHz adjustable

Auxiliary  
power  
22...230 V AC/DC +/-  
10%

Power loss approx. 1 W  
Ambient

temperature range  
-10 °C...+70 °C Secure

isolation EN  
50178, 3-way isolation  
up to 4 kV AC/DC of all  
circuits against each other

Test  
voltage 5  
kV (1.2/50 us)

Working  
voltage 600  
V AC/DC at overvoltage  
category III and pollution  
degree 2

Approvals cULus, GL

Type  
WAS4 PRO DC/DC

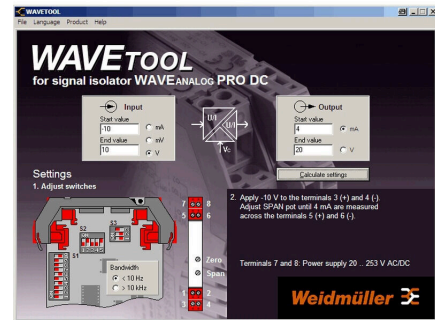
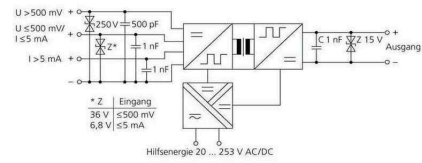
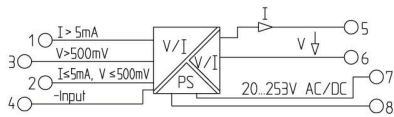
**WAS4 PRO DC/DC**

**Weidmüller Interface GmbH & Co. KG**  
 Klingenbergstraße 26  
 D-32758 Detmold  
 Germany

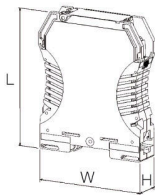
www.weidmueller.com

**Drawings**

**Electric symbol**



Screenshot example, Wave tool software



## WAS4 PRO DC/DC

**Weidmüller Interface GmbH & Co. KG**  
 Klingenbergstraße 26  
 D-32758 Detmold  
 Germany

www.weidmueller.com

## Accessories

### Cross-connections



The distribution or multiplication of a potential to adjoining terminal blocks is realized via a cross-connection. Additional wiring effort can be easily avoided. Even if the poles are broken out, contact reliability in the terminal blocks is still ensured. Our portfolio offers pluggable and screwable cross-connection systems for modular terminal blocks.

### General ordering data

Type	ZQV 2.5N/2 GE	Version
Order No.	<a href="#">1693800000</a>	W-Series, Cross-connector, 24 A
GTIN (EAN)	40081908883621	
Qty.	60 ST	
Type	ZQV 2.5N/2 RT	Version
Order No.	<a href="#">1717900000</a>	W-Series, Cross-connector, 24 A
GTIN (EAN)	4008190349288	
Qty.	60 ST	
Type	ZQV 2.5N/2 BL	Version
Order No.	<a href="#">1717990000</a>	W-Series, Cross-connector, 24 A
GTIN (EAN)	4008190349295	
Qty.	60 ST	
Type	ZQV 2.5N/2 SW	Version
Order No.	<a href="#">1718080000</a>	W-Series, Cross-connector, 24 A
GTIN (EAN)	4008190349301	
Qty.	60 ST	

### Blank



WS markers are the perfect match for the W-series connectors. Thanks to their system compatibility, the WS tags can also be used with the I-series and the Z-series. The large marking surfaces do not only permit long character strings but also multi-line text. WS markers are ideal for labels with long, customised character strings. Thanks to the proven MultiCard format, printing with PrintJet CONNECT oder/or Plotter is possible.

- Can be fitted in strips or individually
- Markers in proven MultiCard format

For custom printing: Please send us a file of our labeling software M-Print PRO or M-Print PRO Online (without installation) for your labeling specifications.

### General ordering data

Type	WS 10/5 MC NE WS	Version
Order No.	<a href="#">1635000000</a>	WS, Terminal marker, 10 x 5 mm, Pitch in mm (P): 5.00 Weidmueller,
GTIN (EAN)	4008190261948	Allen-Bradley, white
Qty.	720 ST	