

## RS F10 Z

**Weidmüller Interface GmbH & Co. KG**

Klingenbergstraße 26

D-32758 Detmold

Germany

[www.weidmueller.com](http://www.weidmueller.com)



Similar to illustration

Passive interfaces for signal transmission on a flat-cable connector equipped with a tension-clamp connection in accordance with IEC 603-1 / DIN 41651. The main features include:

- Group with 10- to 64-pole connectors
- One-to-one electrical connection between controller and field connections.
- Very compact modules can be attached to conventional TS35 or TS32 mounting rails.
- Longer attachment hooks

### General ordering data

|                 |  |
|-----------------|--|
| Version         | Interface, RSF, Plug-in connector in acc. with IEC60603-13 / DIN41651, 10-pole, Tension-clamp connection |
| Order No.       | <a href="#">8537190000</a>   |
| Type            | RS F10 Z   |
| GTIN (EAN)      | 4032248172948  |
| Qty.            | 1 items  |
| Delivery status | This article will no longer be available in the future.  |
| Available until | 2026-02-10T00:00:00+01:00  |

## RS F10 Z

Weidmüller Interface GmbH &amp; Co. KG

Klingenbergstraße 26

D-32758 Detmold

Germany

www.weidmueller.com

## Technical data

## Approvals

Approvals



|                       |                            |
|-----------------------|----------------------------|
| ROHS                  | Conform                    |
| UL File Number Search | <a href="#">UL Website</a> |
| Certificate No. (UR)  | E141197                    |

## Dimensions and weights

|            |        |                 |             |
|------------|--------|-----------------|-------------|
| Depth      | 64 mm  | Depth (inches)  | 2.5197 inch |
| Height     | 87 mm  | Height (inches) | 3.4252 inch |
| Width      | 50 mm  | Width (inches)  | 1.9685 inch |
| Net weight | 72.7 g |                 |             |

## Temperatures

|                     |             |                       |           |
|---------------------|-------------|-----------------------|-----------|
| Storage temperature | -40...70 °C | Operating temperature | 0...55 °C |
|---------------------|-------------|-----------------------|-----------|

## Environmental Product Compliance

|                        |                             |
|------------------------|-----------------------------|
| RoHS Compliance Status | Compliant without exemption |
| REACH SVHC             | No SVHC above 0.1 wt%       |

## Rated data UL

|                                |       |                                |                     |
|--------------------------------|-------|--------------------------------|---------------------|
| Rated current IN               | 1 A   | Operating temperature UL, min. | 0 °C                |
| Operating temperature UL, max. | 25 °C | Rated voltage UN               | ≤ 60 V AC / 75 V DC |

## Connection Data

|                                |         |                            |   |
|--------------------------------|---------|----------------------------|---|
| Number of poles (control side) | 10-pole | Connection (field side)    | LM2NZF 5.08mm   |
| Earthing                       | No      | Connection on control side | Plug-in connector in acc. with IEC60603-13 / DIN41651 |

## Rating data

|               |                   |                              |     |
|---------------|-------------------|------------------------------|-----|
| Rated voltage | 60 V AC / 75 V DC | Rated current per connection | 1 A |
|---------------|-------------------|------------------------------|-----|

## Insulation coordination (EN50178)

|                               |              |                          |       |
|-------------------------------|--------------|--------------------------|-------|
| According to                  | DIN EN 50178 | Rated insulation voltage | 100 V |
| Surge voltage category        | II           | Pollution severity level | 2     |
| Pulse voltage test (1,2/50µs) | 0.8 kV       |                          |       |

## Connection field

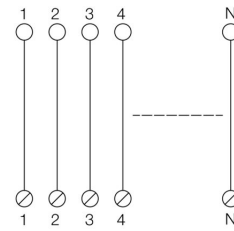
|                                  |                     |                            |                          |
|----------------------------------|---------------------|----------------------------|--------------------------|
| Min. wire cross-section, AWG     | AWG 24              | Type of connection         | Tension-clamp connection |
| Sleeve with plastic collar, max. | 1.5 mm <sup>2</sup> | Flexible with sleeve, min. | 0.25 mm <sup>2</sup>     |
| Flexible with sleeve, max.       | 1.5 mm <sup>2</sup> | Flexible, max. H05(07) V-K | 1.5 mm <sup>2</sup>      |
| Flexible, min. H05(07) V-K       | 0.2 mm <sup>2</sup> | Solid, max. H05(07) V-U    | 2.5 mm <sup>2</sup>      |
| Solid, min. H05(07) V-U          | 0.2 mm <sup>2</sup> | Stripping length           | 7.5 mm                   |
| Clamping range, max.             | 2.5 mm <sup>2</sup> | Clamping range, min.       | 0.13 mm <sup>2</sup>     |
| Max. wire cross-section, AWG     | AWG 14              |                            |                          |

## Technical data

### Classifications

|             |             |             |             |
|-------------|-------------|-------------|-------------|
| ETIM 8.0    | EC002780    | ETIM 9.0    | EC002780    |
| ETIM 10.0   | EC002780    | ECLASS 14.0 | 27-14-11-52 |
| ECLASS 15.0 | 27-14-11-52 |             |             |

Drawings



N: Number of poles

## RS F10 Z

**Weidmüller Interface GmbH & Co. KG**  
 Klingenbergstraße 26  
 D-32758 Detmold  
 Germany

www.weidmueller.com

## Accessories

### Steel



Steel DIN rails are the most widespread on the market. Among metal DIN rails, they have the lowest shortcircuit protection, similar to stainless steel.

#### General ordering data

|            |                            |   |  |
|------------|----------------------------|---|--|
| Type       | TS 32X15 2M/ST/ZN          | Version   |  |
| Order No.  | <a href="#">0122800000</a> | Terminal rail, Accessories, Steel, galvanic zinc plated and passivated, |  |
| GTIN (EAN) | 4008190066307              | Width: 2000 mm, Height: 33 mm, Depth: 15 mm                             |  |
| Qty.       | 20 M                       |   |  |

### Aluminum



Aluminum has the second best electrical conductivity after copper. One advantage is low weight, another is outstanding corrosion protection.

#### General ordering data

|            |                            |   |  |
|------------|----------------------------|---|--|
| Type       | TS 32X15 2M/AL/BK          | Version   |  |
| Order No.  | <a href="#">0169300000</a> | Terminal rail, Accessories, Aluminium, untreated, Width: 2000 mm, |  |
| GTIN (EAN) | 4008190105167              | Height: 33 mm, Depth: 15 mm                                       |  |
| Qty.       | 20 M                       |   |  |

### End bracket



Weidmüller's range of products includes end brackets that guarantee a permanent, reliable mounting on the terminal rail and prevent sliding. Versions with and without screws are available. The end brackets include marking options, also for group markers, and also a test plug holder.

#### General ordering data

|            |                            |   |  |
|------------|----------------------------|---|--|
| Type       | EWK 2                      | Version   |  |
| Order No.  | <a href="#">0199360000</a> | End bracket, beige, TS 32, V-0, Wemid, Width: 15 mm, 100 °C |  |
| GTIN (EAN) | 4008190023546              |   |  |
| Qty.       | 50 ST                      |   |  |

## RS F10 Z

**Weidmüller Interface GmbH & Co. KG**  
 Klingenbergstraße 26  
 D-32758 Detmold  
 Germany

www.weidmueller.com

## Accessories

|            |                            |  |
|------------|----------------------------|--|
| Type       | EWK 1                      | Version  |
| Order No.  | <a href="#">0206160000</a> | End bracket, beige, TS 32, V-0, Wemid, Width: 9 mm, 100 °C |
| GTIN (EAN) | 4008190080020              |  |
| Qty.       | 50 ST                      |  |

## Steel

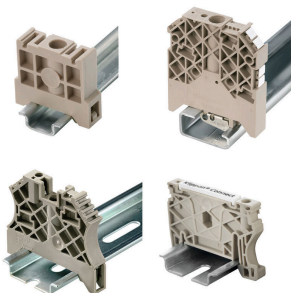


Steel DIN rails are the most widespread on the market. Among metal DIN rails, they have the lowest shortcircuit protection, similar to stainless steel.

## General ordering data

|            |                            |   |
|------------|----------------------------|---|
| Type       | TS 35X15 2M/ST/ZN          | Version   |
| Order No.  | <a href="#">0236400000</a> | Terminal rail, Accessories, Steel, galvanic zinc plated and passivated, Width: 2000 mm, Height: 35 mm, Depth: 15 mm |
| GTIN (EAN) | 4008190114558              |   |
| Qty.       | 20 M                       |   |
| Type       | TS 35X15/LL 2M/ST/ZN       | Version   |
| Order No.  | <a href="#">0236500000</a> | Terminal rail, Accessories, Steel, galvanic zinc plated and passivated, Width: 2000 mm, Height: 35 mm, Depth: 15 mm |
| GTIN (EAN) | 4008190183967              |   |
| Qty.       | 20 M                       |   |
| Type       | TS 35X15/LL 1M/ST/ZN       | Version   |
| Order No.  | <a href="#">0236510000</a> | Terminal rail, Accessories, Steel, galvanic zinc plated and passivated, Width: 1000 mm, Height: 35 mm, Depth: 15 mm |
| GTIN (EAN) | 4008190017699              |   |
| Qty.       | 10 M                       |   |

## End bracket



Weidmüller's range of products includes end brackets that guarantee a permanent, reliable mounting on the terminal rail and prevent sliding. Versions with and without screws are available. The end brackets include marking options, also for group markers, and also a test plug holder.

## General ordering data

|            |                            |   |
|------------|----------------------------|---|
| Type       | EW 35/SCHA/M3              | Version   |
| Order No.  | <a href="#">0258660000</a> | End bracket, beige, TS 35, V-2, Wemid, Width: 16.5 mm, 100 °C |
| GTIN (EAN) | 4008190033477              |   |
| Qty.       | 20 ST                      |   |

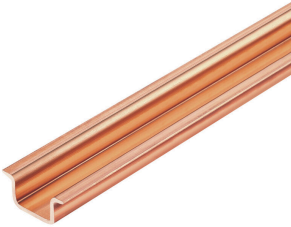
## RS F10 Z

**Weidmüller Interface GmbH & Co. KG**  
 Klingenbergstraße 26  
 D-32758 Detmold  
 Germany

www.weidmueller.com

## Accessories

### Copper



Copper has the best electrical conductivity of all metals used. The copper rail has the highest short-circuit protection.

#### General ordering data

|            |                            |  |  |
|------------|----------------------------|--|--|
| Type       | TS 35X15/2.3 2M/CU/BK      | Version  |  |
| Order No.  | <a href="#">0270100000</a> | Terminal rail, Accessories, Copper, untreated, Width: 2000 mm, Height: 35 mm, Depth: 15 mm |  |
| GTIN (EAN) | 4008190105136              |  |  |
| Qty.       | 20 M                       |  |  |

### Aluminum



Aluminum has the second best electrical conductivity after copper. One advantage is low weight, anMiscellaneous is outstanding corrosion protection.

#### General ordering data

|            |                            |  |  |
|------------|----------------------------|--|--|
| Type       | TS 35X7.5 2M/AL/BK         | Version  |  |
| Order No.  | <a href="#">0330800000</a> | Terminal rail, Accessories, Aluminium, untreated, Width: 2000 mm, Height: 35 mm, Depth: 7.5 mm |  |
| GTIN (EAN) | 4008190100650              |  |  |
| Qty.       | 40 M                       |  |  |

### Steel



Steel DIN rails are the most widespread on the market. Among metal DIN rails, they have the lowest shortcircuit protection, similar to stainless steel.

#### General ordering data

|            |                            |  |  |
|------------|----------------------------|--|--|
| Type       | TS 35X7.5 2M/ST/ZN         | Version  |  |
| Order No.  | <a href="#">0383400000</a> | Terminal rail, Accessories, Steel, galvanic zinc plated and passivated, Width: 2000 mm, Height: 35 mm, Depth: 7.5 mm |  |
| GTIN (EAN) | 4008190088026              |  |  |
| Qty.       | 40 M                       |  |  |

## RS F10 Z

Weidmüller Interface GmbH &amp; Co. KG

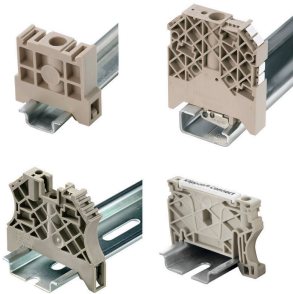
Klingenbergstraße 26  
D-32758 Detmold  
Germany

[www.weidmueller.com](http://www.weidmueller.com)

## Accessories

|            |                            |  |
|------------|----------------------------|--|
| Type       | TS 35X7.5 1M/ST/ZN         | Version  |
| Order No.  | <a href="#">0383410000</a> | Terminal rail, Accessories, Steel, galvanized, chromium-plated, Width: |
| GTIN (EAN) | 4008190115623              | 1000 mm, Height: 35 mm, Depth: 7.5 mm                                  |
| Qty.       | 20 M                       |  |

## End bracket



Weidmüller's range of products includes end brackets that guarantee a permanent, reliable mounting on the terminal rail and prevent sliding. Versions with and without screws are available. The end brackets include marking options, also for group markers, and also a test plug holder.

## General ordering data

|            |                            |   |
|------------|----------------------------|---|
| Type       | EW 35 GR 7032              | Version   |
| Order No.  | <a href="#">0383530000</a> | End bracket, grey, TS 35, V-0, Wemid, Width: 9 mm, 120 °C         |
| GTIN (EAN) | 4008190027322              |   |
| Qty.       | 50 ST                      |   |
| Type       | EW 35                      | Version   |
| Order No.  | <a href="#">0383560000</a> | End bracket, beige, TS 35, V-2, Wemid, Width: 8.5 mm, 100 °C      |
| GTIN (EAN) | 4008190181314              |   |
| Qty.       | 50 ST                      |   |
| Type       | EWK 1 ALT                  | Version   |
| Order No.  | <a href="#">0495160000</a> | End bracket, beige, TS 32, V-2, Polyamide 66, Width: 8 mm, 100 °C |
| GTIN (EAN) | 4008190160777              |   |
| Qty.       | 50 ST                      |   |

## Steel



Steel DIN rails are the most widespread on the market. Among metal DIN rails, they have the lowest shortcircuit protection, similar to stainless steel.

## General ordering data

|            |                            |   |
|------------|----------------------------|---|
| Type       | TS 35X15/2.3 2M/ST/ZN      | Version   |
| Order No.  | <a href="#">0498000000</a> | Terminal rail, Accessories, Steel, galvanic zinc plated and passivated, |
| GTIN (EAN) | 4008190042493              | Width: 2000 mm, Height: 35 mm, Depth: 15 mm                             |
| Qty.       | 20 M                       |   |
| Type       | TS 32X15/LL 2M/ST/ZN       | Version   |
| Order No.  | <a href="#">0514400000</a> | Terminal rail, Accessories, Steel, galvanic zinc plated and passivated, |
| GTIN (EAN) | 4008190086152              | Width: 2000 mm, Height: 33 mm, Depth: 15 mm                             |
| Qty.       | 20 M                       |   |

## RS F10 Z

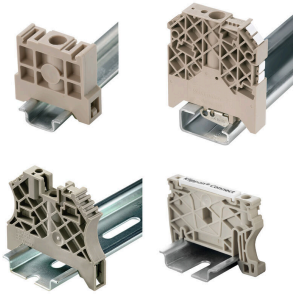
**Weidmüller Interface GmbH & Co. KG**  
 Klingenbergstraße 26  
 D-32758 Detmold  
 Germany

www.weidmueller.com

## Accessories

|            |                            |   |
|------------|----------------------------|---|
| Type       | TS 35X7.5/LL 2M/ST/ZN      | Version   |
| Order No.  | <a href="#">0514500000</a> | Terminal rail, Accessories, Steel, galvanic zinc plated and passivated, |
| GTIN (EAN) | 4008190046019              | Width: 2000 mm, Height: 35 mm, Depth: 7.5 mm                            |
| Qty.       | 40 M                       |   |
| Type       | TS 35X7.5/LL 1M/ST/ZN      | Version   |
| Order No.  | <a href="#">0514510000</a> | Terminal rail, Accessories, Steel, galvanic zinc plated and passivated, |
| GTIN (EAN) | 4008190116620              | Width: 1000 mm, Height: 35 mm, Depth: 7.5 mm                            |
| Qty.       | 20 M                       |   |

## End bracket



Weidmüller's range of products includes end brackets that guarantee a permanent, reliable mounting on the terminal rail and prevent sliding. Versions with and without screws are available. The end brackets include marking options, also for group markers, and also a test plug holder.

## General ordering data

|            |                            |  |
|------------|----------------------------|--|
| Type       | WEW 35/1                   | Version  |
| Order No.  | <a href="#">1059000000</a> | End bracket, dark beige, TS 35, V-2, Wemid, Width: 12 mm, 100 °C |
| GTIN (EAN) | 4008190172282              |  |
| Qty.       | 50 ST                      |  |
| Type       | WEW 35/2                   | Version  |
| Order No.  | <a href="#">1061200000</a> | End bracket, dark beige, TS 35, HB, Wemid, Width: 8 mm, 100 °C   |
| GTIN (EAN) | 4008190030230              |  |
| Qty.       | 50 ST                      |  |
| Type       | WEW 32/1                   | Version  |
| Order No.  | <a href="#">1067600000</a> | End bracket, dark beige, TS 32, V-2, PA 66 GF 30, Width: 12 mm,  |
| GTIN (EAN) | 4008190099657              | 100 °C   |
| Qty.       | 50 ST                      |  |

## Stainless steel



Stainless steel is a collective term for all types of steel (alloys) with a high degree of purity and corrosion resistance.

## General ordering data

|            |                            |   |
|------------|----------------------------|---|
| Type       | TS 35X7.5 2M/CRN           | Version   |
| Order No.  | <a href="#">1747350000</a> | Terminal rail, Accessories, Stainless steel 1.4301, untreated, Width: |
| GTIN (EAN) | 4032248003372              | 2000 mm, Height: 35 mm, Depth: 7.5 mm                                 |
| Qty.       | 40 M                       |   |

## RS F10 Z

**Weidmüller Interface GmbH & Co. KG**  
 Klingenbergstraße 26  
 D-32758 Detmold  
 Germany

www.weidmueller.com

## Accessories

### End bracket



Weidmüller's range of products includes end brackets that guarantee a permanent, reliable mounting on the terminal rail and prevent sliding. Versions with and without screws are available. The end brackets include marking options, also for group markers, and also a test plug holder.

### General ordering data

|            |                           |   |  |
|------------|---------------------------|---|--|
| Type       | ZEW 35                    | Version   |  |
| Order No.  | <a href="#">954000000</a> | End bracket, dark beige, TS 35, V-2, Wemid, Width: 6 mm, 100 °C |  |
| GTIN (EAN) | 4008190956264             |   |  |
| Qty.       | 20 ST                     |   |  |

### Aluminum



Aluminum has the second best electrical conductivity after copper. One advantage is low weight, another is outstanding corrosion protection.

### General ordering data

|            |                           |   |  |
|------------|---------------------------|---|--|
| Type       | TS 35X15/2.3 2M/AL/BK     | Version   |  |
| Order No.  | <a href="#">184829000</a> | Terminal rail, Accessories, Aluminium, untreated, Width: 2000 mm, Height: 35 mm, Depth: 15 mm |  |
| GTIN (EAN) | 4032248385614             |   |  |
| Qty.       | 40 M                      |   |  |

### Steel



Steel DIN rails are the most widespread on the market. Among metal DIN rails, they have the lowest shortcircuit protection, similar to stainless steel.

### General ordering data

|            |                           |  |  |
|------------|---------------------------|--|--|
| Type       | TS 35X7.5/LL 2M/ST/SZ     | Version  |  |
| Order No.  | <a href="#">791506000</a> | Terminal rail, Accessories, Steel, galvanic zinc plated and passivated, Width: 2000 mm, Height: 35 mm, Depth: 7.5 mm |  |
| GTIN (EAN) | 4032248296279             |  |  |
| Qty.       | 40 M                      |  |  |

## RS F10 Z

**Weidmüller Interface GmbH & Co. KG**  
 Klingenbergstraße 26  
 D-32758 Detmold  
 Germany

www.weidmueller.com

## Accessories

### Stainless steel



Stainless steel is a collective term for all types of steel (alloys) with a high degree of purity and corrosion resistance.

#### General ordering data

|            |                            |  |  |
|------------|----------------------------|--|--|
| Type       | TS 32X15 2M/CRN            | Version  |  |
| Order No.  | <a href="#">0293220000</a> | Terminal rail, Accessories, Stainless steel, rust-proof, untreated, Width: |  |
| GTIN (EAN) | 4032248014026              | 2000 mm, Height: 33 mm, Depth: 15 mm                                       |  |
| Qty.       | 20 M                       |  |  |

### Steel



Steel DIN rails are the most widespread on the market. Among metal DIN rails, they have the lowest shortcircuit protection, similar to stainless steel.

#### General ordering data

|            |                            |   |  |
|------------|----------------------------|---|--|
| Type       | TS 35X15/LL 2M/ST/SZ       | Version   |  |
| Order No.  | <a href="#">7907490000</a> | Terminal rail, Accessories, Steel, galvanic zinc plated and passivated, |  |
| GTIN (EAN) | 4032248296262              | Width: 2000 mm, Height: 35 mm, Depth: 15 mm                             |  |
| Qty.       | 20 M                       |   |  |

### Plastic



Plastic DIN rails have insulating properties and are very light. They can be used where clearance and creepage distances to the support bracket cannot be achieved with standard DIN rails.

#### General ordering data

|            |                            |   |  |
|------------|----------------------------|---|--|
| Type       | TSK 35X15 2M PVC/GR        | Version   |  |
| Order No.  | <a href="#">0514300000</a> | Terminal rail, Accessories, PVC, untreated, Width: 2000 mm, Height: |  |
| GTIN (EAN) | 4008190052263              | 35 mm, Depth: 15 mm   |  |
| Qty.       | 2 M                        |   |  |

## RS F10 Z

**Weidmüller Interface GmbH & Co. KG**  
 Klingenbergstraße 26  
 D-32758 Detmold  
 Germany

[www.weidmueller.com](http://www.weidmueller.com)

## Accessories

## Steel

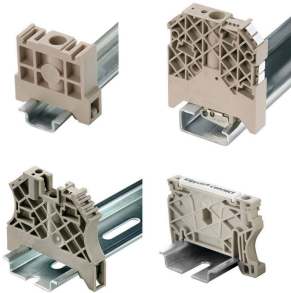


Steel DIN rails are the most widespread on the market. Among metal DIN rails, they have the lowest shortcircuit protection, similar to stainless steel.

## General ordering data

|            |                            |   |  |
|------------|----------------------------|---|--|
| Type       | TS 35X7.5 2M/ST/SZ         | Version   |  |
| Order No.  | <a href="#">9300090000</a> | Terminal rail, Accessories, Steel, galvanic zinc plated and passivated, |  |
| GTIN (EAN) | 4032248387564              | Width: 2000 mm, Height: 35 mm, Depth: 7.5 mm                            |  |
| Qty.       | 40 M                       |   |  |

## End bracket



Weidmüller's range of products includes end brackets that guarantee a permanent, reliable mounting on the terminal rail and prevent sliding. Versions with and without screws are available. The end brackets include marking options, also for group markers, and also a test plug holder.

## General ordering data

|            |                            |   |  |
|------------|----------------------------|---|--|
| Type       | ZEW 35/2                   | Version   |  |
| Order No.  | <a href="#">8630740000</a> | End bracket, dark beige, TS 35, V-2, Wemid, Width: 8 mm, 100 °C |  |
| GTIN (EAN) | 4032248348916              |   |  |
| Qty.       | 20 ST                      |   |  |