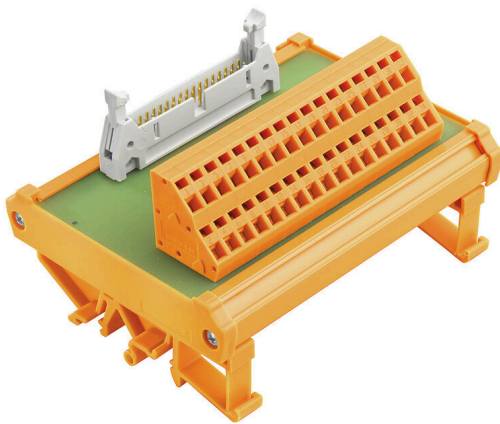


RS F50 Z**Weidmüller Interface GmbH & Co. KG**Klingenbergstraße 26
D-32758 Detmold
Germany

www.weidmueller.com



Similar to illustration

Passive interfaces for signal transmission on a flat-cable connector equipped with a tension-clamp connection in accordance with IEC 603-1 / DIN 41651. The main features include:

- Group with 10- to 64-pole connectors
- One-to-one electrical connection between controller and field connections.
- Very compact modules can be attached to conventional TS35 or TS32 mounting rails.
- Longer attachment hooks

General ordering data

Version	Interface, RSF, Plug-in connector in acc. with IEC60603-13 / DIN41651, 50-pole, Tension-clamp connection
Order No.	8537150000
Type	RS F50 Z
GTIN (EAN)	4032248172801
Qty.	1 items

RS F50 Z

Weidmüller Interface GmbH & Co. KG

Klingenbergstraße 26

D-32758 Detmold

Germany

www.weidmueller.com

Technical data

Approvals

Approvals



ROHS	Conform
UL File Number Search	UL Website
Certificate No. (UR)	E141197

Dimensions and weights

Depth	64 mm	Depth (inches)	2.5197 inch
Height	87 mm	Height (inches)	3.4252 inch
Width	145 mm	Width (inches)	5.7086 inch
Net weight	234 g		

Temperatures

Storage temperature	-40...70 °C	Operating temperature	0...55 °C
---------------------	-------------	-----------------------	-----------

Environmental Product Compliance

RoHS Compliance Status	Compliant without exemption
REACH SVHC	No SVHC above 0.1 wt%

Rated data UL

Rated current IN	1 A	Operating temperature UL, min.	0 °C
Operating temperature UL, max.	25 °C	Rated voltage UN	≤ 60 V AC / 75 V DC

Connection Data

Number of poles (control side)	50-pole	Connection (field side)	LM2NZF 5.08mm
Earthing	No	Connection on control side	Plug-in connector in acc. with IEC60603-13 / DIN41651

Rating data

Rated voltage	60 V AC / 75 V DC	Rated current per connection	1 A
---------------	-------------------	------------------------------	-----

Insulation coordination (EN50178)

According to	DIN EN 50178	Rated insulation voltage	100 V
Surge voltage category	II	Pollution severity level	2
Pulse voltage test (1,2/50µs)	0.8 kV		

Connection field

Min. wire cross-section, AWG	AWG 24	Type of connection	Tension-clamp connection
Sleeve with plastic collar, max.	1.5 mm ²	Flexible with sleeve, min.	0.25 mm ²
Flexible with sleeve, max.	1.5 mm ²	Flexible, max. H05(07) V-K	1.5 mm ²
Flexible, min. H05(07) V-K	0.2 mm ²	Solid, max. H05(07) V-U	2.5 mm ²
Solid, min. H05(07) V-U	0.2 mm ²	Stripping length	7.5 mm
Clamping range, max.	2.5 mm ²	Clamping range, min.	0.13 mm ²
Max. wire cross-section, AWG	AWG 14		

RS F50 Z

Weidmüller Interface GmbH & Co. KG
Klingenbergstraße 26
D-32758 Detmold
Germany

www.weidmueller.com

Technical data

Classifications

ETIM 8.0	EC002780	ETIM 9.0	EC002780
ETIM 10.0	EC002780	ECLASS 14.0	27-14-11-52
ECLASS 15.0	27-14-11-52		

Drawings



N: Number of poles

RS F50 Z

Weidmüller Interface GmbH & Co. KG
 Klingenbergstraße 26
 D-32758 Detmold
 Germany

www.weidmueller.com

Accessories

Steel



Steel DIN rails are the most widespread on the market. Among metal DIN rails, they have the lowest shortcircuit protection, similar to stainless steel.

General ordering data

Type	TS 32X15 2M/ST/ZN	Version	
Order No.	0122800000	Terminal rail, Accessories, Steel, galvanic zinc plated and passivated,	
GTIN (EAN)	4008190066307	Width: 2000 mm, Height: 33 mm, Depth: 15 mm	
Qty.	20 M		

Aluminum



Aluminum has the second best electrical conductivity after copper. One advantage is low weight, another is outstanding corrosion protection.

General ordering data

Type	TS 32X15 2M/AL/BK	Version	
Order No.	0169300000	Terminal rail, Accessories, Aluminium, untreated, Width: 2000 mm,	
GTIN (EAN)	4008190105167	Height: 33 mm, Depth: 15 mm	
Qty.	20 M		

End bracket



Weidmüller's range of products includes end brackets that guarantee a permanent, reliable mounting on the terminal rail and prevent sliding. Versions with and without screws are available. The end brackets include marking options, also for group markers, and also a test plug holder.

General ordering data

Type	EWK 2	Version	
Order No.	0199360000	End bracket, beige, TS 32, V-0, Wemid, Width: 15 mm, 100 °C	
GTIN (EAN)	4008190023546		
Qty.	50 ST		

RS F50 Z

Weidmüller Interface GmbH & Co. KG
 Klingenbergstraße 26
 D-32758 Detmold
 Germany

www.weidmueller.com

Accessories

Type	EWK 1	Version
Order No.	0206160000	End bracket, beige, TS 32, V-0, Wemid, Width: 9 mm, 100 °C
GTIN (EAN)	4008190080020	
Qty.	50 ST	

Steel

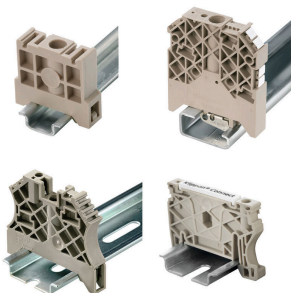


Steel DIN rails are the most widespread on the market. Among metal DIN rails, they have the lowest shortcircuit protection, similar to stainless steel.

General ordering data

Type	TS 35X15 2M/ST/ZN	Version
Order No.	0236400000	Terminal rail, Accessories, Steel, galvanic zinc plated and passivated, Width: 2000 mm, Height: 35 mm, Depth: 15 mm
GTIN (EAN)	4008190114558	
Qty.	20 M	
Type	TS 35X15/LL 2M/ST/ZN	Version
Order No.	0236500000	Terminal rail, Accessories, Steel, galvanic zinc plated and passivated, Width: 2000 mm, Height: 35 mm, Depth: 15 mm
GTIN (EAN)	4008190183967	
Qty.	20 M	
Type	TS 35X15/LL 1M/ST/ZN	Version
Order No.	0236510000	Terminal rail, Accessories, Steel, galvanic zinc plated and passivated, Width: 1000 mm, Height: 35 mm, Depth: 15 mm
GTIN (EAN)	4008190017699	
Qty.	10 M	

End bracket



Weidmüller's range of products includes end brackets that guarantee a permanent, reliable mounting on the terminal rail and prevent sliding. Versions with and without screws are available. The end brackets include marking options, also for group markers, and also a test plug holder.

General ordering data

Type	EW 35/SCHA/M3	Version
Order No.	0258660000	End bracket, beige, TS 35, V-2, Wemid, Width: 16.5 mm, 100 °C
GTIN (EAN)	4008190033477	
Qty.	20 ST	

RS F50 Z

Weidmüller Interface GmbH & Co. KG
 Klingenbergstraße 26
 D-32758 Detmold
 Germany

www.weidmueller.com

Accessories

Copper



Copper has the best electrical conductivity of all metals used. The copper rail has the highest short-circuit protection.

General ordering data

Type	TS 35X15/2.3 2M/CU/BK	Version	
Order No.	0270100000	Terminal rail, Accessories, Copper, untreated, Width: 2000 mm, Height: 35 mm, Depth: 15 mm	
GTIN (EAN)	4008190105136		
Qty.	20 M		

Aluminum



Aluminum has the second best electrical conductivity after copper. One advantage is low weight, anMiscellaneous is outstanding corrosion protection.

General ordering data

Type	TS 35X7.5 2M/AL/BK	Version	
Order No.	0330800000	Terminal rail, Accessories, Aluminium, untreated, Width: 2000 mm, Height: 35 mm, Depth: 7.5 mm	
GTIN (EAN)	4008190100650		
Qty.	40 M		

Steel



Steel DIN rails are the most widespread on the market. Among metal DIN rails, they have the lowest shortcircuit protection, similar to stainless steel.

General ordering data

Type	TS 35X7.5 2M/ST/ZN	Version	
Order No.	0383400000	Terminal rail, Accessories, Steel, galvanic zinc plated and passivated, Width: 2000 mm, Height: 35 mm, Depth: 7.5 mm	
GTIN (EAN)	4008190088026		
Qty.	40 M		

RS F50 Z

Weidmüller Interface GmbH & Co. KG
 Klingenbergstraße 26
 D-32758 Detmold
 Germany

www.weidmueller.com

Accessories

Type	TS 35X7.5 1M/ST/ZN	Version	
Order No.	0383410000	Terminal rail, Accessories, Steel, galvanized, chromium-plated, Width:	
GTIN (EAN)	4008190115623	1000 mm, Height: 35 mm, Depth: 7.5 mm	
Qty.	20 M		

End bracket



Weidmüller's range of products includes end brackets that guarantee a permanent, reliable mounting on the terminal rail and prevent sliding. Versions with and without screws are available. The end brackets include marking options, also for group markers, and also a test plug holder.

General ordering data

Type	EW 35 GR 7032	Version	
Order No.	0383530000	End bracket, grey, TS 35, V-0, Wemid, Width: 9 mm, 120 °C	
GTIN (EAN)	4008190027322		
Qty.	50 ST		
Type	EW 35	Version	
Order No.	0383560000	End bracket, beige, TS 35, V-2, Wemid, Width: 8.5 mm, 100 °C	
GTIN (EAN)	4008190181314		
Qty.	50 ST		
Type	EWK 1 ALT	Version	
Order No.	0495160000	End bracket, beige, TS 32, V-2, Polyamide 66, Width: 8 mm, 100 °C	
GTIN (EAN)	4008190160777		
Qty.	50 ST		

Steel



Steel DIN rails are the most widespread on the market. Among metal DIN rails, they have the lowest shortcircuit protection, similar to stainless steel.

General ordering data

Type	TS 35X15/2.3 2M/ST/ZN	Version	
Order No.	0498000000	Terminal rail, Accessories, Steel, galvanic zinc plated and passivated,	
GTIN (EAN)	4008190042493	Width: 2000 mm, Height: 35 mm, Depth: 15 mm	
Qty.	20 M		
Type	TS 32X15/LL 2M/ST/ZN	Version	
Order No.	0514400000	Terminal rail, Accessories, Steel, galvanic zinc plated and passivated,	
GTIN (EAN)	4008190086152	Width: 2000 mm, Height: 33 mm, Depth: 15 mm	
Qty.	20 M		

RS F50 Z

Weidmüller Interface GmbH & Co. KG
 Klingenbergstraße 26
 D-32758 Detmold
 Germany

www.weidmueller.com

Accessories

Type	TS 35X7.5/LL 2M/ST/ZN	Version
Order No.	0514500000	Terminal rail, Accessories, Steel, galvanic zinc plated and passivated,
GTIN (EAN)	4008190046019	Width: 2000 mm, Height: 35 mm, Depth: 7.5 mm
Qty.	40 M	
Type	TS 35X7.5/LL 1M/ST/ZN	Version
Order No.	0514510000	Terminal rail, Accessories, Steel, galvanic zinc plated and passivated,
GTIN (EAN)	4008190116620	Width: 1000 mm, Height: 35 mm, Depth: 7.5 mm
Qty.	20 M	

End bracket



Weidmüller's range of products includes end brackets that guarantee a permanent, reliable mounting on the terminal rail and prevent sliding. Versions with and without screws are available. The end brackets include marking options, also for group markers, and also a test plug holder.

General ordering data

Type	WEW 35/1	Version
Order No.	1059000000	End bracket, dark beige, TS 35, V-2, Wemid, Width: 12 mm, 100 °C
GTIN (EAN)	4008190172282	
Qty.	50 ST	
Type	WEW 35/2	Version
Order No.	1061200000	End bracket, dark beige, TS 35, HB, Wemid, Width: 8 mm, 100 °C
GTIN (EAN)	4008190030230	
Qty.	50 ST	
Type	WEW 32/1	Version
Order No.	1067600000	End bracket, dark beige, TS 32, V-2, PA 66 GF 30, Width: 12 mm,
GTIN (EAN)	4008190099657	100 °C
Qty.	50 ST	

Stainless steel



Stainless steel is a collective term for all types of steel (alloys) with a high degree of purity and corrosion resistance.

General ordering data

Type	TS 35X7.5 2M/CRN	Version
Order No.	1747350000	Terminal rail, Accessories, Stainless steel 1.4301, untreated, Width:
GTIN (EAN)	4032248003372	2000 mm, Height: 35 mm, Depth: 7.5 mm
Qty.	40 M	

RS F50 Z

Weidmüller Interface GmbH & Co. KG

Klingenbergstraße 26

D-32758 Detmold

Germany

www.weidmueller.com

Accessories

End bracket



Weidmüller's range of products includes end brackets that guarantee a permanent, reliable mounting on the terminal rail and prevent sliding. Versions with and without screws are available. The end brackets include marking options, also for group markers, and also a test plug holder.

General ordering data

Type	ZEW 35	Version	
Order No.	954000000	End bracket, dark beige, TS 35, V-2, Wemid, Width: 6 mm, 100 °C	
GTIN (EAN)	4008190956264		
Qty.	20 ST		

Aluminum



Aluminum has the second best electrical conductivity after copper. One advantage is low weight, another is outstanding corrosion protection.

General ordering data

Type	TS 35X15/2.3 2M/AL/BK	Version	
Order No.	184829000	Terminal rail, Accessories, Aluminium, untreated, Width: 2000 mm, Height: 35 mm, Depth: 15 mm	
GTIN (EAN)	4032248385614		
Qty.	40 M		

Steel



Steel DIN rails are the most widespread on the market. Among metal DIN rails, they have the lowest shortcircuit protection, similar to stainless steel.

General ordering data

Type	TS 35X7.5/LL 2M/ST/SZ	Version	
Order No.	791506000	Terminal rail, Accessories, Steel, galvanic zinc plated and passivated, Width: 2000 mm, Height: 35 mm, Depth: 7.5 mm	
GTIN (EAN)	4032248296279		
Qty.	40 M		

RS F50 Z

Weidmüller Interface GmbH & Co. KG
 Klingenbergstraße 26
 D-32758 Detmold
 Germany

www.weidmueller.com

Accessories

Stainless steel



Stainless steel is a collective term for all types of steel (alloys) with a high degree of purity and corrosion resistance.

General ordering data

Type	TS 32X15 2M/CRN	Version	
Order No.	0293220000	Terminal rail, Accessories, Stainless steel, rust-proof, untreated, Width:	
GTIN (EAN)	4032248014026	2000 mm, Height: 33 mm, Depth: 15 mm	
Qty.	20 M		

Steel



Steel DIN rails are the most widespread on the market. Among metal DIN rails, they have the lowest shortcircuit protection, similar to stainless steel.

General ordering data

Type	TS 35X15/LL 2M/ST/SZ	Version	
Order No.	7907490000	Terminal rail, Accessories, Steel, galvanic zinc plated and passivated,	
GTIN (EAN)	4032248296262	Width: 2000 mm, Height: 35 mm, Depth: 15 mm	
Qty.	20 M		

Plastic



Plastic DIN rails have insulating properties and are very light. They can be used where clearance and creepage distances to the support bracket cannot be achieved with standard DIN rails.

General ordering data

Type	TSK 35X15 2M PVC/GR	Version	
Order No.	0514300000	Terminal rail, Accessories, PVC, untreated, Width: 2000 mm, Height:	
GTIN (EAN)	4008190052263	35 mm, Depth: 15 mm	
Qty.	2 M		

RS F50 Z

Weidmüller Interface GmbH & Co. KG

Klingenbergstraße 26

D-32758 Detmold

Germany

www.weidmueller.com

Accessories

Steel

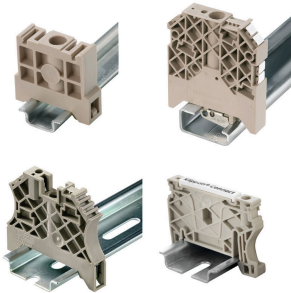


Steel DIN rails are the most widespread on the market. Among metal DIN rails, they have the lowest shortcircuit protection, similar to stainless steel.

General ordering data

Type	TS 35X7.5 2M/ST/SZ	Version	
Order No.	9300090000	Terminal rail, Accessories, Steel, galvanic zinc plated and passivated,	
GTIN (EAN)	4032248387564	Width: 2000 mm, Height: 35 mm, Depth: 7.5 mm	
Qty.	40 M		

End bracket



Weidmüller's range of products includes end brackets that guarantee a permanent, reliable mounting on the terminal rail and prevent sliding. Versions with and without screws are available. The end brackets include marking options, also for group markers, and also a test plug holder.

General ordering data

Type	ZEW 35/2	Version	
Order No.	8630740000	End bracket, dark beige, TS 35, V-2, Wemid, Width: 8 mm, 100 °C	
GTIN (EAN)	4032248348916		
Qty.	20 ST		