

## RS F40 Z

Weidmüller Interface GmbH &amp; Co. KG

Klingenbergstraße 26

D-32758 Detmold

Germany

www.weidmueller.com



Similar to illustration

Passive interfaces for signal transmission on a flat-cable connector equipped with a tension-clamp connection in accordance with IEC 603-1 / DIN 41651. The main features include:

- Group with 10- to 64-pole connectors
- One-to-one electrical connection between controller and field connections.
- Very compact modules can be attached to conventional TS35 or TS32 mounting rails.
- Longer attachment hooks

## General ordering data

Version	Interface, RSF, Plug-in connector in acc. with IEC60603-13 / DIN41651, 40-pole, Tension-clamp connection
Order No.	<a href="#">8537140000</a>
Type	RS F40 Z
GTIN (EAN)	4032248172795
Qty.	1 items

## RS F40 Z

Weidmüller Interface GmbH &amp; Co. KG

Klingenbergstraße 26

D-32758 Detmold

Germany

www.weidmueller.com

## Technical data

## Approvals

Approvals



ROHS	Conform
UL File Number Search	<a href="#">UL Website</a>
Certificate No. (UR)	E141197

## Dimensions and weights

Depth	64 mm	Depth (inches)	2.5197 inch
Height	87 mm	Height (inches)	3.4252 inch
Width	115 mm	Width (inches)	4.5275 inch
Net weight	198 g		

## Temperatures

Storage temperature	-40...70 °C	Operating temperature	0...55 °C
---------------------	-------------	-----------------------	-----------

## Environmental Product Compliance

RoHS Compliance Status	Compliant without exemption
REACH SVHC	No SVHC above 0.1 wt%

## Rated data UL

Rated current IN	1 A	Operating temperature UL, min.	0 °C
Operating temperature UL, max.	25 °C	Rated voltage UN	≤ 60 V AC / 75 V DC

## Connection Data

Number of poles (control side)	40-pole	Connection (field side)	LM2NZF 5.08mm
Earthing	No	Connection on control side	Plug-in connector in acc. with IEC60603-13 / DIN41651

## Rating data

Rated voltage	60 V AC / 75 V DC	Rated current per connection	1 A
---------------	-------------------	------------------------------	-----

## Insulation coordination (EN50178)

According to	DIN EN 50178	Rated insulation voltage	100 V
Surge voltage category	II	Pollution severity level	2
Pulse voltage test (1,2/50µs)	0.8 kV		

## Connection field

Min. wire cross-section, AWG	AWG 24	Type of connection	Tension-clamp connection
Sleeve with plastic collar, max.	1.5 mm <sup>2</sup>	Flexible with sleeve, min.	0.25 mm <sup>2</sup>
Flexible with sleeve, max.	1.5 mm <sup>2</sup>	Flexible, max. H05(07) V-K	1.5 mm <sup>2</sup>
Flexible, min. H05(07) V-K	0.2 mm <sup>2</sup>	Solid, max. H05(07) V-U	2.5 mm <sup>2</sup>
Solid, min. H05(07) V-U	0.2 mm <sup>2</sup>	Stripping length	7.5 mm
Clamping range, max.	2.5 mm <sup>2</sup>	Clamping range, min.	0.13 mm <sup>2</sup>
Max. wire cross-section, AWG	AWG 14		

## Technical data

### Classifications

ETIM 8.0	EC002780	ETIM 9.0	EC002780
ETIM 10.0	EC002780	ECLASS 14.0	27-14-11-52
ECLASS 15.0	27-14-11-52		

**Drawings**



N: Number of poles

## RS F40 Z

**Weidmüller Interface GmbH & Co. KG**  
 Klingenbergstraße 26  
 D-32758 Detmold  
 Germany

www.weidmueller.com

## Accessories

### Steel



Steel DIN rails are the most widespread on the market. Among metal DIN rails, they have the lowest shortcircuit protection, similar to stainless steel.

#### General ordering data

Type	TS 32X15 2M/ST/ZN	Version	
Order No.	<a href="#">0122800000</a>	Terminal rail, Accessories, Steel, galvanic zinc plated and passivated,	
GTIN (EAN)	4008190066307	Width: 2000 mm, Height: 33 mm, Depth: 15 mm	
Qty.	20 M		

### Aluminum



Aluminum has the second best electrical conductivity after copper. One advantage is low weight, another is outstanding corrosion protection.

#### General ordering data

Type	TS 32X15 2M/AL/BK	Version	
Order No.	<a href="#">0169300000</a>	Terminal rail, Accessories, Aluminium, untreated, Width: 2000 mm,	
GTIN (EAN)	4008190105167	Height: 33 mm, Depth: 15 mm	
Qty.	20 M		

### End bracket



Weidmüller's range of products includes end brackets that guarantee a permanent, reliable mounting on the terminal rail and prevent sliding. Versions with and without screws are available. The end brackets include marking options, also for group markers, and also a test plug holder.

#### General ordering data

Type	EWK 2	Version	
Order No.	<a href="#">0199360000</a>	End bracket, beige, TS 32, V-0, Wemid, Width: 15 mm, 100 °C	
GTIN (EAN)	4008190023546		
Qty.	50 ST		

## RS F40 Z

**Weidmüller Interface GmbH & Co. KG**  
 Klingenbergstraße 26  
 D-32758 Detmold  
 Germany

www.weidmueller.com

## Accessories

Type	EWK 1	Version
Order No.	<a href="#">0206160000</a>	End bracket, beige, TS 32, V-0, Wemid, Width: 9 mm, 100 °C
GTIN (EAN)	4008190080020	
Qty.	50 ST	

## Steel

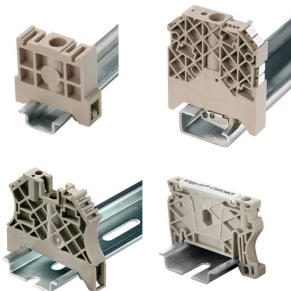


Steel DIN rails are the most widespread on the market. Among metal DIN rails, they have the lowest shortcircuit protection, similar to stainless steel.

## General ordering data

Type	TS 35X15 2M/ST/ZN	Version
Order No.	<a href="#">0236400000</a>	Terminal rail, Accessories, Steel, galvanic zinc plated and passivated, Width: 2000 mm, Height: 35 mm, Depth: 15 mm
GTIN (EAN)	4008190114558	
Qty.	20 M	
Type	TS 35X15/LL 2M/ST/ZN	Version
Order No.	<a href="#">0236500000</a>	Terminal rail, Accessories, Steel, galvanic zinc plated and passivated, Width: 2000 mm, Height: 35 mm, Depth: 15 mm
GTIN (EAN)	4008190183967	
Qty.	20 M	
Type	TS 35X15/LL 1M/ST/ZN	Version
Order No.	<a href="#">0236510000</a>	Terminal rail, Accessories, Steel, galvanic zinc plated and passivated, Width: 1000 mm, Height: 35 mm, Depth: 15 mm
GTIN (EAN)	4008190017699	
Qty.	10 M	

## End bracket



Weidmüller's range of products includes end brackets that guarantee a permanent, reliable mounting on the terminal rail and prevent sliding. Versions with and without screws are available. The end brackets include marking options, also for group markers, and also a test plug holder.

## General ordering data

Type	EW 35/SCHA/M3	Version
Order No.	<a href="#">0258660000</a>	End bracket, beige, TS 35, V-2, Wemid, Width: 16.5 mm, 100 °C
GTIN (EAN)	4008190033477	
Qty.	20 ST	

## RS F40 Z

**Weidmüller Interface GmbH & Co. KG**  
 Klingenbergstraße 26  
 D-32758 Detmold  
 Germany

www.weidmueller.com

## Accessories

### Copper



Copper has the best electrical conductivity of all metals used. The copper rail has the highest short-circuit protection.

#### General ordering data

Type	TS 35X15/2.3 2M/CU/BK	Version	
Order No.	<a href="#">0270100000</a>	Terminal rail, Accessories, Copper, untreated, Width: 2000 mm, Height: 35 mm, Depth: 15 mm	
GTIN (EAN)	4008190105136		
Qty.	20 M		

### Aluminum



Aluminum has the second best electrical conductivity after copper. One advantage is low weight, anMiscellaneous is outstanding corrosion protection.

#### General ordering data

Type	TS 35X7.5 2M/AL/BK	Version	
Order No.	<a href="#">0330800000</a>	Terminal rail, Accessories, Aluminium, untreated, Width: 2000 mm, Height: 35 mm, Depth: 7.5 mm	
GTIN (EAN)	4008190100650		
Qty.	40 M		

### Steel



Steel DIN rails are the most widespread on the market. Among metal DIN rails, they have the lowest shortcircuit protection, similar to stainless steel.

#### General ordering data

Type	TS 35X7.5 2M/ST/ZN	Version	
Order No.	<a href="#">0383400000</a>	Terminal rail, Accessories, Steel, galvanic zinc plated and passivated, Width: 2000 mm, Height: 35 mm, Depth: 7.5 mm	
GTIN (EAN)	4008190088026		
Qty.	40 M		

## RS F40 Z

**Weidmüller Interface GmbH & Co. KG**  
 Klingenbergstraße 26  
 D-32758 Detmold  
 Germany

www.weidmueller.com

## Accessories

Type	TS 35X7.5 1M/ST/ZN	Version
Order No.	<a href="#">0383410000</a>	Terminal rail, Accessories, Steel, galvanized, chromium-plated, Width:
GTIN (EAN)	4008190115623	1000 mm, Height: 35 mm, Depth: 7.5 mm
Qty.	20 M	

## End bracket



Weidmüller's range of products includes end brackets that guarantee a permanent, reliable mounting on the terminal rail and prevent sliding. Versions with and without screws are available. The end brackets include marking options, also for group markers, and also a test plug holder.

## General ordering data

Type	EW 35 GR 7032	Version
Order No.	<a href="#">0383530000</a>	End bracket, grey, TS 35, V-0, Wemid, Width: 9 mm, 120 °C
GTIN (EAN)	4008190027322	
Qty.	50 ST	
Type	EW 35	Version
Order No.	<a href="#">0383560000</a>	End bracket, beige, TS 35, V-2, Wemid, Width: 8.5 mm, 100 °C
GTIN (EAN)	4008190181314	
Qty.	50 ST	
Type	EWK 1 ALT	Version
Order No.	<a href="#">0495160000</a>	End bracket, beige, TS 32, V-2, Polyamide 66, Width: 8 mm, 100 °C
GTIN (EAN)	4008190160777	
Qty.	50 ST	

## Steel



Steel DIN rails are the most widespread on the market. Among metal DIN rails, they have the lowest shortcircuit protection, similar to stainless steel.

## General ordering data

Type	TS 35X15/2.3 2M/ST/ZN	Version
Order No.	<a href="#">0498000000</a>	Terminal rail, Accessories, Steel, galvanic zinc plated and passivated,
GTIN (EAN)	4008190042493	Width: 2000 mm, Height: 35 mm, Depth: 15 mm
Qty.	20 M	
Type	TS 32X15/LL 2M/ST/ZN	Version
Order No.	<a href="#">0514400000</a>	Terminal rail, Accessories, Steel, galvanic zinc plated and passivated,
GTIN (EAN)	4008190086152	Width: 2000 mm, Height: 33 mm, Depth: 15 mm
Qty.	20 M	

## RS F40 Z

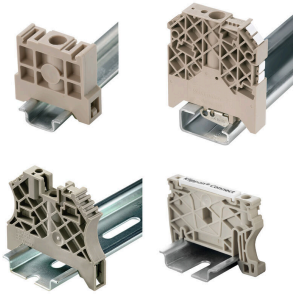
**Weidmüller Interface GmbH & Co. KG**  
 Klingenbergstraße 26  
 D-32758 Detmold  
 Germany

www.weidmueller.com

## Accessories

Type	TS 35X7.5/LL 2M/ST/ZN	Version
Order No.	<a href="#">0514500000</a>	Terminal rail, Accessories, Steel, galvanic zinc plated and passivated,
GTIN (EAN)	4008190046019	Width: 2000 mm, Height: 35 mm, Depth: 7.5 mm
Qty.	40 M	
Type	TS 35X7.5/LL 1M/ST/ZN	Version
Order No.	<a href="#">0514510000</a>	Terminal rail, Accessories, Steel, galvanic zinc plated and passivated,
GTIN (EAN)	4008190116620	Width: 1000 mm, Height: 35 mm, Depth: 7.5 mm
Qty.	20 M	

## End bracket



Weidmüller's range of products includes end brackets that guarantee a permanent, reliable mounting on the terminal rail and prevent sliding. Versions with and without screws are available. The end brackets include marking options, also for group markers, and also a test plug holder.

## General ordering data

Type	WEW 35/1	Version
Order No.	<a href="#">1059000000</a>	End bracket, dark beige, TS 35, V-2, Wemid, Width: 12 mm, 100 °C
GTIN (EAN)	4008190172282	
Qty.	50 ST	
Type	WEW 35/2	Version
Order No.	<a href="#">1061200000</a>	End bracket, dark beige, TS 35, HB, Wemid, Width: 8 mm, 100 °C
GTIN (EAN)	4008190030230	
Qty.	50 ST	
Type	WEW 32/1	Version
Order No.	<a href="#">1067600000</a>	End bracket, dark beige, TS 32, V-2, PA 66 GF 30, Width: 12 mm,
GTIN (EAN)	4008190099657	100 °C
Qty.	50 ST	

## Stainless steel



Stainless steel is a collective term for all types of steel (alloys) with a high degree of purity and corrosion resistance.

## General ordering data

Type	TS 35X7.5 2M/CRN	Version
Order No.	<a href="#">1747350000</a>	Terminal rail, Accessories, Stainless steel 1.4301, untreated, Width:
GTIN (EAN)	4032248003372	2000 mm, Height: 35 mm, Depth: 7.5 mm
Qty.	40 M	

## RS F40 Z

Weidmüller Interface GmbH &amp; Co. KG

Klingenbergstraße 26

D-32758 Detmold

Germany

www.weidmueller.com

## Accessories

## End bracket



Weidmüller's range of products includes end brackets that guarantee a permanent, reliable mounting on the terminal rail and prevent sliding. Versions with and without screws are available. The end brackets include marking options, also for group markers, and also a test plug holder.

## General ordering data

Type	ZEW 35	Version	
Order No.	<a href="#">954000000</a>	End bracket, dark beige, TS 35, V-2, Wemid, Width: 6 mm, 100 °C	
GTIN (EAN)	4008190956264		
Qty.	20 ST		

## Aluminum



Aluminum has the second best electrical conductivity after copper. One advantage is low weight, another is outstanding corrosion protection.

## General ordering data

Type	TS 35X15/2.3 2M/AL/BK	Version	
Order No.	<a href="#">184829000</a>	Terminal rail, Accessories, Aluminium, untreated, Width: 2000 mm, Height: 35 mm, Depth: 15 mm	
GTIN (EAN)	4032248385614		
Qty.	40 M		

## Steel



Steel DIN rails are the most widespread on the market. Among metal DIN rails, they have the lowest shortcircuit protection, similar to stainless steel.

## General ordering data

Type	TS 35X7.5/LL 2M/ST/SZ	Version	
Order No.	<a href="#">791506000</a>	Terminal rail, Accessories, Steel, galvanic zinc plated and passivated, Width: 2000 mm, Height: 35 mm, Depth: 7.5 mm	
GTIN (EAN)	4032248296279		
Qty.	40 M		

## RS F40 Z

**Weidmüller Interface GmbH & Co. KG**  
 Klingenbergstraße 26  
 D-32758 Detmold  
 Germany

www.weidmueller.com

## Accessories

### Stainless steel



Stainless steel is a collective term for all types of steel (alloys) with a high degree of purity and corrosion resistance.

#### General ordering data

Type	TS 32X15 2M/CRN	Version	
Order No.	<a href="#">0293220000</a>	Terminal rail, Accessories, Stainless steel, rust-proof, untreated, Width:	
GTIN (EAN)	4032248014026	2000 mm, Height: 33 mm, Depth: 15 mm	
Qty.	20 M		

### Steel



Steel DIN rails are the most widespread on the market. Among metal DIN rails, they have the lowest shortcircuit protection, similar to stainless steel.

#### General ordering data

Type	TS 35X15/LL 2M/ST/SZ	Version	
Order No.	<a href="#">7907490000</a>	Terminal rail, Accessories, Steel, galvanic zinc plated and passivated,	
GTIN (EAN)	4032248296262	Width: 2000 mm, Height: 35 mm, Depth: 15 mm	
Qty.	20 M		

### Plastic



Plastic DIN rails have insulating properties and are very light. They can be used where clearance and creepage distances to the support bracket cannot be achieved with standard DIN rails.

#### General ordering data

Type	TSK 35X15 2M PVC/GR	Version	
Order No.	<a href="#">0514300000</a>	Terminal rail, Accessories, PVC, untreated, Width: 2000 mm, Height:	
GTIN (EAN)	4008190052263	35 mm, Depth: 15 mm	
Qty.	2 M		

## RS F40 Z

Weidmüller Interface GmbH &amp; Co. KG

Klingenbergstraße 26

D-32758 Detmold

Germany

www.weidmueller.com

## Accessories

## Steel



Steel DIN rails are the most widespread on the market. Among metal DIN rails, they have the lowest shortcircuit protection, similar to stainless steel.

## General ordering data

Type	TS 35X7.5 2M/ST/SZ	Version	
Order No.	<a href="#">9300090000</a>	Terminal rail, Accessories, Steel, galvanic zinc plated and passivated,	
GTIN (EAN)	4032248387564	Width: 2000 mm, Height: 35 mm, Depth: 7.5 mm	
Qty.	40 M		

## End bracket



Weidmüller's range of products includes end brackets that guarantee a permanent, reliable mounting on the terminal rail and prevent sliding. Versions with and without screws are available. The end brackets include marking options, also for group markers, and also a test plug holder.

## General ordering data

Type	ZEW 35/2	Version	
Order No.	<a href="#">8630740000</a>	End bracket, dark beige, TS 35, V-2, Wemid, Width: 8 mm, 100 °C	
GTIN (EAN)	4032248348916		
Qty.	20 ST		