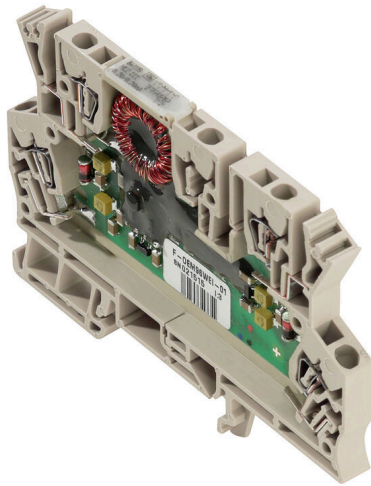


MCZ CCC 0-20MA/0-20MA

Weidmüller Interface GmbH & Co. KG
Klingenbergstraße 26
D-32758 Detmold
Germany

www.weidmueller.com

Do not use product for
new developments

Product image**MCZ: The smallest solution**

- The smallest analogue signal converter in terminal block format on the market
- Space-saving conversion of analogue signals in the control cabinet thanks to the slim, 6 mm wide module width
- Simple wiring with plug-in cross-connectors

General ordering data

Version	Passive isolator, Input : 0-20 mA, Output : 0-20 mA
Order No.	8411190000
Type	MCZ CCC 0-20MA/0-20MA
GTIN (EAN)	4008 190992736
Qty.	10 items

MCZ CCC 0-20MA/0-20MA

Weidmüller Interface GmbH & Co. KG
Klingenbergstraße 26
D-32758 Detmold
Germany

www.weidmueller.com

Technical data

Approvals

Approvals



ROHS Conform

UL File Number Search [UL Website](#)

Certificate No. (cURus) E141197

Dimensions and weights

Depth	63.2 mm	Depth (inches)	2.4882 inch
Width	6 mm	Width (inches)	0.2362 inch
Length	91 mm	Length (inches)	3.5827 inch
Net weight	44.3 g		

Temperatures

Storage temperature	-40 °C...85 °C	Operating temperature	-25 °C...60 °C
---------------------	----------------	-----------------------	----------------

Probability of failure

SIL in compliance with IEC 61508 None

Environmental Product Compliance

RoHS Compliance Status	Compliant with exemption
RoHS Exemption (if applicable/known)	7a, 7cl
REACH SVHC	Lead 7439-92-1
SCIP	35d83707-6a3b-45b5-b9f8-6ba8184c863e

Input

Number inputs	1	Input current	0(4)...20 mA current loop
Voltage drop	2.5...3 V at 20 mA	Pick-up current	<100 µA

Output

Number of outputs	1	Load impedance current	≤ 500 Ω
Output current	0...20 mA	Cut-off frequency (-3 dB)	100 Hz

General data

Accuracy	<0.1 % of end value	Protection degree	IP20
Supply voltage	via the input measuring circuit	Long-term drift	0
Mounting rail	TS 35	Temperature coefficient	≤ 50 ppm/K of measured value at 0 Ω load resistance
Nominal power consumption	2 VA	Configuration	none
Operating altitude	≤ 2000 m		

Insulation coordination

EMC standards	EN 61000-6	Test voltage	0.3 kV
Surge voltage category	I	Pollution severity	2

MCZ CCC 0-20MA/0-20MA

Weidmüller Interface GmbH & Co. KG
 Klingenbergstraße 26
 D-32758 Detmold
 Germany

www.weidmueller.com

Technical data

Galvanic isolation	between input/output	Rated voltage	100 V
--------------------	----------------------	---------------	-------

Connection data

Type of connection	Tension-clamp connection	Clamping range, rated connection	1.5 mm ²
Clamping range, min.	0.5 mm ²	Clamping range, max.	1.5 mm ²
Wire connection cross section AWG, min.	AWG 26	Wire connection cross section AWG, max.	AWG 16
Wire cross-section, solid, min.	0.5 mm ²	Wire cross-section, solid, max.	1.5 mm ²
Wire cross-section, solid, min. (AWG)	AWG 26	Wire cross-section, solid, max. (AWG)	AWG 16
Wire connection cross section, finely stranded, min.	0.5 mm ²	Wire connection cross section, finely stranded, max.	1.5 mm ²
Wire cross-section, finely stranded, min. (AWG)	AWG 26	Wire cross-section, finely stranded, max. (AWG)	AWG 16
Wire connection cross-section, finely stranded with wire-end ferrules DIN 46228/4, min.	0.5 mm ²	Wire connection cross-section, finely stranded with wire-end ferrules DIN 46228/4, max.	1.5 mm ²
Conductor cross-section, flexible, AEH (DIN 46228-1), min.	0.5 mm ²	Conductor cross-section, flexible, AEH (DIN 46228-1), max.	1.5 mm ²

Part description

Product description	<p>MCZ CCC analogue converters can be used for the galvanic isolation of standard 0(4) ... 20 mA signals.</p> <p>They are supplied by the measured signal and require no additional auxiliary supply.</p> <p>The measured signal is transmitted in a ratio of 1:1.</p> <p>The connection is realised via tension clamp terminals.</p>
---------------------	---

Classifications

ETIM 8.0	EC002653	ETIM 9.0	EC002653
ETIM 10.0	EC002653	ECLASS 14.0	27-21-01-20
ECLASS 15.0	27-21-01-20		

Tender specification sheets

Long specification	<p>Standard signal passive isolator, input-loop powered</p> <p>1-channel passive isolator in 6 mm width input-loop powered, for transmitting and isolating analogue DC current signals 0/4...20 mA.</p> <p>Add-on housing for TS35 rail mounting</p> <p>Dimensions: L/W/H 91/6/ 63.2 mm</p> <p>Tension-clamp connection / Nominal cross-section 1.5 mm²</p> <p>Protection degree: IP 20</p> <p>Input 0/4...20 mA</p> <p>Voltage drop 2.5... 3 V at 20 mA</p> <p>Output 0/4...20 mA</p> <p>Load resistance < 500 Ohm</p> <p>Transmission error < 0,1 % v. E.</p>	Short specification	<p>Standard signal passive isolator, input-loop powered</p> <p>1-channel signal passive isolator in 6 mm width with input current loop feed, for transmitting and isolating analogue DC current signals from 0/4 to 20 mA</p>
--------------------	--	---------------------	---

MCZ CCC 0-20MA/0-20MA

Weidmüller Interface GmbH & Co. KG
Klingenbergstraße 26
D-32758 Detmold
Germany

www.weidmueller.com

Technical data

Auxiliary
power
0/4...20 mA input current
loop
Ambient
temperature range -25 °C...
+60 °C
Isolation
EN 50178 , 2-way
isolation up to 5 10 Veff
Approvals cURus, CSA
Type
CCC 0-20mA/0-20mA

MCZ

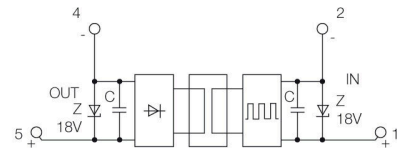
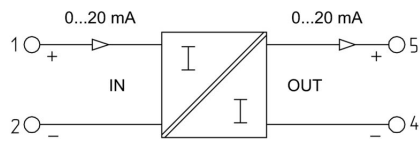
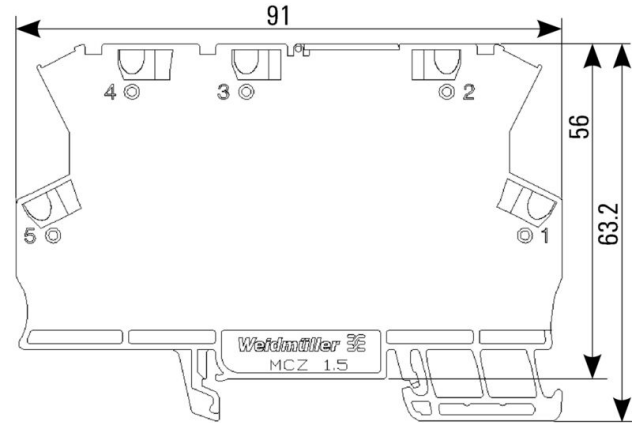
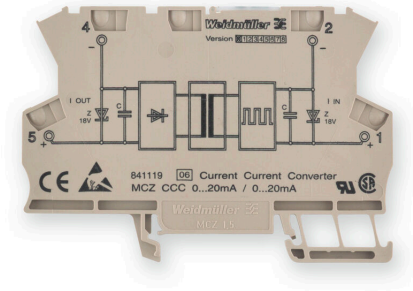
MCZ CCC 0-20mA/0-20mA

Weidmüller Interface GmbH & Co. KG
 Klingenbergstraße 26
 D-32758 Detmold
 Germany

Drawings

www.weidmueller.com

Connection diagram



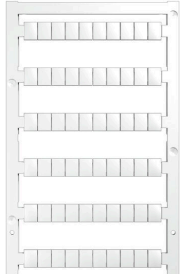
MCZ CCC 0-20MA/0-20MA

Weidmüller Interface GmbH & Co. KG
 Klingenbergstraße 26
 D-32758 Detmold
 Germany

www.weidmueller.com

Accessories

Blank



WS markers are the perfect match for the W-series connectors. Thanks to their system compatibility, the WS tags can also be used with the I-series and the Z-series. The large marking surfaces do not only permit long character strings but also multi-line text. WS markers are ideal for labels with long, customised character strings. Thanks to the proven MultiCard format, printing with PrintJet CONNECT oder/or Plotter is possible.

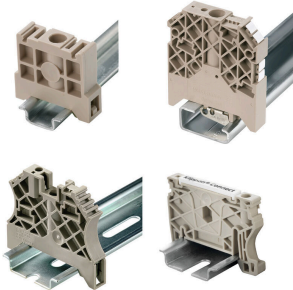
- Can be fitted in strips or individually
- Markers in proven MultiCard format

For custom printing: Please send us a file of our labeling software M-Print PRO or M-Print PRO Online (without installation) for your labeling specifications.

General ordering data

Type	WS 8/6 PLUS MC NE WS	Version	
Order No.	1951880000	WS, Terminal marker, 8 x 6 mm, Pitch in mm (P): 6.00 Weidmueller,	
GTIN (EAN)	4032248632114	white	
Qty.	600 ST		

End bracket



Weidmüller's range of products includes end brackets that guarantee a permanent, reliable mounting on the terminal rail and prevent sliding. Versions with and without screws are available. The end brackets include marking options, also for group markers, and also a test plug holder.

General ordering data

Type	EW 35	Version	
Order No.	0383560000	End bracket, beige, TS 35, V-2, Wemid, Width: 8.5 mm, 100 °C	
GTIN (EAN)	4008190181314		
Qty.	50 ST		

AP MCZ 1.5 - End plate



Open miniature housing in modular terminal format with five tension clamp connections. A transparent hinged top plate can be used for labelling and provides access to potentiometer and status displays. Plug-in cross-connectors can be used to interconnect the three top connections. A cover plate for closing off the housing is also available.

MCZ CCC 0-20MA/0-20MA

Weidmüller Interface GmbH & Co. KG
 Klingenbergstraße 26
 D-32758 Detmold
 Germany

www.weidmueller.com

Accessories

General ordering data

Type	AP MCZ1.5 1674	Version	
Order No.	8389030000	End plate, OMNIMATE Housing - TERMINALBOX grey-beige, End plate, Width: 1.5 mm	
GTIN (EAN)	4008190386849		
Qty.	50 ST		

Cross-connections



The distribution or multiplication of a potential to adjoining terminal blocks is realized via a cross-connection. Additional wiring effort can be easily avoided. Even if the poles are broken out, contact reliability in the terminal blocks is still ensured. Our portfolio offers pluggable and screwable cross-connection systems for modular terminal blocks.

General ordering data

Type	ZQV 4N/2	Version	
Order No.	1527930000	Cross-connector (terminal), Plugged, orange, 32 A, Number of poles: 2, Pitch in mm (P): 6.10, Insulated: Yes, Width: 9.9 mm	
GTIN (EAN)	4050118332766		
Qty.	60 ST		
Type	ZQV 4N/3	Version	
Order No.	1527940000	Cross-connector (terminal), Plugged, orange, 32 A, Number of poles: 3, Pitch in mm (P): 6.10, Insulated: Yes, Width: 16 mm	
GTIN (EAN)	4050118332865		
Qty.	60 ST		
Type	ZQV 4N/4	Version	
Order No.	1527970000	Cross-connector (terminal), Plugged, orange, 32 A, Number of poles: 4, Pitch in mm (P): 6.10, Insulated: Yes, Width: 22.1 mm	
GTIN (EAN)	4050118332889		
Qty.	60 ST		