

## MCZ O 24VUC

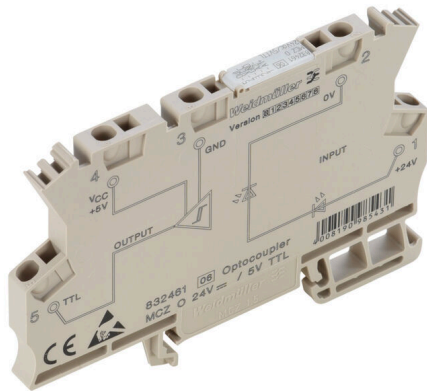
**Weidmüller Interface GmbH & Co. KG**

Klingenbergstraße 26

D-32758 Detmold

Germany

[www.weidmueller.com](http://www.weidmueller.com)



Similar to illustration

High reliability in a terminal block format  
MCZ SERIES relay modules are among the smallest on the market. Thanks to the small width of just 6.1 mm, a lot of space can be saved in the panel. All products in the series have three cross-connection terminals and are distinguished by simple wiring with plug-in cross-connections. The tension clamp connection system, proven a million times over, and the integrated reverse polarity protection ensure a high level of safety during installation and operation. Precisely fitting accessories from cross-connectors to markers and end plates make the MCZ SERIES versatile and convenient to use.

- Tension clamp connection
- Integrated cross-connection in input/output.
- Clampable conductor cross-section is 0.5 to 1.5 mm<sup>2</sup>
- Variants of the MCZ TRAK type are particularly suitable for the transport sector and tested according to DIN EN 50155

### General ordering data

|            |   |
|------------|---|
| Version    | MCZ SERIES, Solid-state relay, Rated control voltage: 24 V UC ±20 % , Rated switching voltage: 24 VDC ±20%, Continuous current: 2 A, Tension-clamp connection |
| Order No.  | <a href="#">8287730000</a>  |
| Type       | MCZ O 24VUC   |
| GTIN (EAN) | 4008190985400   |
| Qty.       | 10 items  |

## MCZ O 24VUC

Weidmüller Interface GmbH &amp; Co. KG

Klingenbergstraße 26

D-32758 Detmold

Germany

www.weidmueller.com

## Technical data

## Approvals

Approvals



ROHS Conform

UL File Number Search [UL Website](#)

Certificate No. (cURus) E141197

## Dimensions and weights

|            |         |                 |             |
|------------|---------|-----------------|-------------|
| Depth      | 63.2 mm | Depth (inches)  | 2.4882 inch |
| Height     | 91 mm   | Height (inches) | 3.5827 inch |
| Width      | 6.1 mm  | Width (inches)  | 0.2402 inch |
| Net weight | 22.6 g  |                 |             |

## Temperatures

|                       |                |                     |  |
|-----------------------|----------------|---------------------|--|
| Storage temperature   | -40 °C...60 °C | Ambient temperature | -25 °C...40 °C                                 |
| Operating temperature |                | Humidity            | 40 °C / 93 % rel. humidity,<br>no condensation |

## Probability of failure

MTTF 1430 a

## Environmental Product Compliance

|                                      |   |
|--------------------------------------|---|
| RoHS Compliance Status               | Compliant with exemption  |
| RoHS Exemption (if applicable/known) | 7a, 7cl   |
| REACH SVHC                           | Lead 7439-92-1, 6,6'-di-tert-butyl-2,2'-methylenedi-p-cresol 119-47-1 |
| SCIP                                 | 35d83707-6a3b-45b5-b9f8-6ba8184c863e                                  |

## Rated data UL

Certificate No. (cURus) E141197

## Control side

|                         |   |                                       |                    |
|-------------------------|---|---------------------------------------|--------------------|
| Rated control voltage   | 24 V UC $\pm$ 20 %                          | Rated control voltage (control input) | 24 V UC $\pm$ 20 % |
| Nominal control current | 10 mA DC $\pm$ 20 %, 10 mA<br>AC $\pm$ 20 % | Power rating                          | 195 mW / 220 mVA   |
| Status indicator        | LED   | Protective circuit                    | Rectifier          |
| Input frequency         | AC: 10 Hz / DC: 30 Hz                       |                                       |                    |

## Load side

|   |                    |   |                           |
|---|--------------------|---|---------------------------|
| Rated switching voltage                       | 24 VDC $\pm$ 20%   | Continuous current                            | 2 A                       |
| Switch-on delay                               | $\leq$ 10 ms       | Switch-off delay                              | $\leq$ 10 ms              |
| Voltage drop at max. load                     | $\leq$ 1.8 V       | Short-circuit-proof                           | Yes                       |
| Protective circuit, load side                 | Varistor           | Contact type                                  | 1 NO contact (Transistor) |
| max. switching frequency (AC control voltage) | 10 Hz              | max. switching frequency (DC control voltage) | 30 Hz                     |
| Nominal auxiliary voltage                     | 24 V DC $\pm$ 20 % |   |                           |

## MCZ O 24VUC

Weidmüller Interface GmbH &amp; Co. KG

Klingenbergstraße 26

D-32758 Detmold

Germany

www.weidmueller.com

## Technical data

## General data

|                                    |                          |         |  |
|------------------------------------|--------------------------|---------|--|
| Mounting rail                      | TS 35                    |         |  |
| Test button available              | No                       |         |  |
| Colour                             | beige                    |         |  |
| UL94 flammability rating component | Component                | Housing |  |
|                                    | UL94 flammability rating | V-0     |  |

## Insulation coordination

|  |                  |   |                  |
|--|------------------|---|------------------|
| Rated voltage                                    | 300 V            | Pollution severity  | 2                |
| Surge voltage category                           | III              | Clearance and creepage distances for control side - load side | ≥ 5.5 mm         |
| Dielectric strength for control side - load side | 1 kVeff / 1 s    | Dielectric strength to mounting rail                          | 4 kVeff / 1 Min. |
| Impulse withstand voltage                        | 6 kV (1.2/50 µs) | Protection degree   | IP20             |

## Further details of approvals / standards

|                       |                |                         |         |
|-----------------------|----------------|-------------------------|---------|
| Certificate No. (CSA) | 154685-1198742 | Certificate No. (cURus) | E141197 |
|-----------------------|----------------|-------------------------|---------|

## Connection data

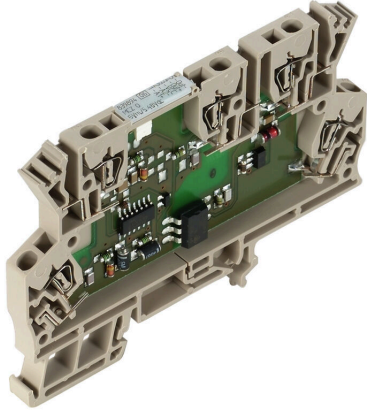
|   |                          |  |   |                     |
|---|--------------------------|--|---|---------------------|
| Wire connection method  | Tension-clamp connection |  | Stripping length, rated connection  | 8 mm                |
| Clamping range, rated connection  | 1.5 mm <sup>2</sup>      |  | Clamping range, min.  | 0.5 mm <sup>2</sup> |
| Clamping range, max.  | 1.5 mm <sup>2</sup>      |  | Wire connection cross section AWG, min.   | AWG 26              |
| Wire connection cross section AWG, max.   | AWG 16                   |  | Wire cross-section, solid, min.   | 0.5 mm <sup>2</sup> |
| Wire cross-section, solid, max.   | 1.5 mm <sup>2</sup>      |  | Wire cross-section, solid, min. (AWG)   | AWG 26              |
| Wire cross-section, solid, max. (AWG)   | AWG 16                   |  | Wire connection cross section, finely stranded, min.                                    | 0.5 mm <sup>2</sup> |
| Wire connection cross section, finely stranded, max.                                    | 1.5 mm <sup>2</sup>      |  | Wire cross-section, finely stranded, min. (AWG)   | AWG 26              |
| Wire cross-section, finely stranded, max. (AWG)   | AWG 16                   |  | Wire connection cross-section, finely stranded with wire-end ferrules DIN 46228/4, min. | 0.5 mm <sup>2</sup> |
| Wire connection cross-section, finely stranded with wire-end ferrules DIN 46228/4, max. | 1.5 mm <sup>2</sup>      |  | Conductor cross-section, flexible, AEH (DIN 46228-1), min.                              | 0.5 mm <sup>2</sup> |
| Conductor cross-section, flexible, AEH (DIN 46228-1), max.                              | 1.5 mm <sup>2</sup>      |  | Blade size  | 0.6 x 3.5 mm        |

## Classifications

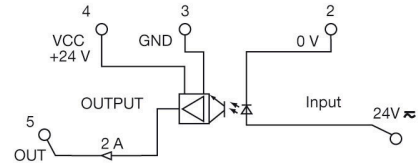
|             |             |             |             |
|-------------|-------------|-------------|-------------|
| ETIM 8.0    | EC001504    | ETIM 9.0    | EC001504    |
| ETIM 10.0   | EC001504    | ECLASS 14.0 | 27-37-16-04 |
| ECLASS 15.0 | 27-37-16-04 |             |             |

Drawings

Wiring diagram



Similar to illustration



Schaltsymbol

Dimensional drawing

