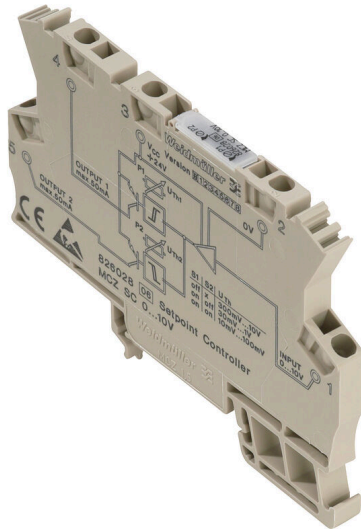


MCZ SC 0-10V

Weidmüller Interface GmbH & Co. KG
 Klingenbergstraße 26
 D-32758 Detmold
 Germany

www.weidmueller.com



MCZ: The smallest solution

- The smallest analogue signal converter in terminal block format on the market
- Space-saving conversion of analogue signals in the control cabinet thanks to the slim, 6 mm wide module width
- Simple wiring with plug-in cross-connectors

General ordering data

Version	Limit value monitoring, Input : 0-10 V, Output 2 x transistor
Order No.	8260280000
Type	MCZ SC 0-10V
GTIN (EAN)	4008 190985417
Qty.	10 items

MCZ SC 0-10V

Weidmüller Interface GmbH & Co. KG
Klingenbergstraße 26
D-32758 Detmold
Germany

www.weidmueller.com

Technical data

Approvals

Approvals



ROHS Conform

UL File Number Search [UL Website](#)

Certificate No. (cURus) E141197

Dimensions and weights

Depth	63.2 mm	Depth (inches)	2.4882 inch
Height	15 mm	Height (inches)	0.5906 inch
Width	6 mm	Width (inches)	0.2362 inch
Length	91 mm	Length (inches)	3.5827 inch
Net weight	29.6 g		

Temperatures

Storage temperature	-25 °C...60 °C	Operating temperature	-20 °C...60 °C
Humidity at operating temperature	0...95 % (no condensation)		

Probability of failure

SIL in compliance with IEC 61508	None	MTTF	681 a
----------------------------------	------	------	-------

Environmental Product Compliance

RoHS Compliance Status	Compliant with exemption
RoHS Exemption (if applicable/known)	6c, 7a, 7cl
REACH SVHC	Lead 7439-92-1
SCIP	35d83707-6a3b-45b5-b9f8-6ba8184c863e

Input

Input current	0.5...20 mA	Input resistance, current	50 Ω
Voltage drop	1 V		

Output

Number of outputs	2	Cut-off frequency (-3 dB)	100 Hz
-------------------	---	---------------------------	--------

General data

Protection degree	IP20	Supply voltage	24 V DC ± 20 %
Step response time	<250 μs (switching threshold at 90% of max. input signal; RI ≤ 1 kΩ)	Current consumption	15 mA
Mounting rail	TS 35	Temperature coefficient	± 250 ppm/K, 350 ppm/K
Nominal power consumption	1.5 VA	Configuration	Potentiometer

Insulation coordination

EMC standards	EN 55011, EN 61000-6	Galvanic isolation	between input/output/supply/relay
---------------	----------------------	--------------------	-----------------------------------

MCZ SC 0-10V

Weidmüller Interface GmbH & Co. KG

Klingenbergstraße 26
D-32758 Detmold
Germany

www.weidmueller.com

Technical data

Connection data

Type of connection	Tension-clamp connection	Clamping range, rated connection	1.5 mm ²
Clamping range, min.	0.5 mm ²	Clamping range, max.	1.5 mm ²

Classifications

ETIM 8.0	EC002654	ETIM 9.0	EC002654
ETIM 10.0	EC002654	ECLASS 14.0	27-21-01-22
ECLASS 15.0	27-21-01-22		

Tender specification sheets

Long specification	<p>Trip amplifier for monitoring a 0...10 V standard signal with two switching outputs Trip amplifier in 6 mm width for analogue 0...10 V standard signals with two PNP-transistor switch outputs for monitoring an upper and lower threshold (adjustable via potentiometer). DIP switches can be used to select a range of 300 mV to 10 V, 30 mV to 1 V, and 10 mV to 100 mV on the input side. Add-on housing for TS35 rail mounting Dimensions: L/W/H 91/6/ 63.2 mm Tension-clamp connection / Nominal cross-section 1.5 mm² Protection degree: IP 20 Input 0...10 V</p> <p>ranges 300 mV...10 V / 30 mV...1 V / 10 mV...100 mV Output Double switching output PNP/ 50 mA per channel</p> <p>adjustable via potentiometer Switching hysteresis 1 % of input Step response time < 250 us (10...90 %) Temperature coefficient < 250 ppm K Auxiliary power 24 V DC +/- 20 % Ambient temperature range 0°C...+50 °C Isolation 1.5 kV Approvals cURus, CSA</p>	Short specification	<p>Trip amplifier for monitoring a 0...10 V standard signal with two switching outputs Trip amplifier in 6 mm width for analogue 0...10 V standard signals with two PNP-transistor switch outputs for monitoring an upper and lower threshold (adjustable via potentiometer). DIP switches can be used to select a range of 300 mV to 10 V, 30 mV to 1 V, and 10 mV to 100 mV on the input side.</p>
--------------------	---------------------------------------------------------------------------------------------------------------------------------------------------------------------------------------------------------------------------------------------------------------------------------------------------------------------------------------------------------------------------------------------------------------------------------------------------------------------------------------------------------------------------------------------------------------------------------------------------------------------------------------------------------------------------------------------------------------------------------------------------------------------------------------------------------------------------------------------------------------------------------------------------------------------------------------------------------------------------------------------------------------------------------------------------------------	---------------------	------------------------------------------------------------------------------------------------------------------------------------------------------------------------------------------------------------------------------------------------------------------------------------------------------------------------------------------------------------------------------------------------------------------

Technical data

Type
MCZ SC 0-10V

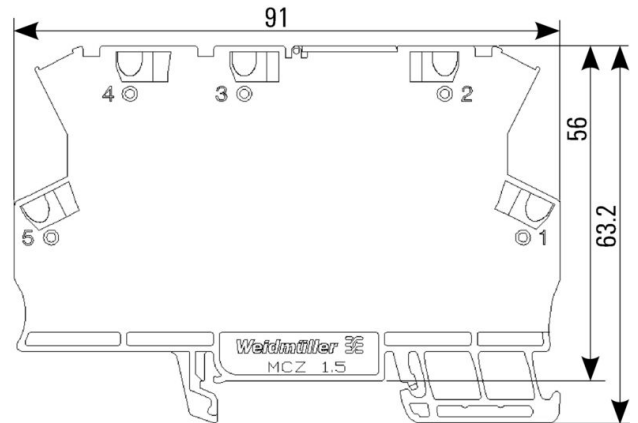
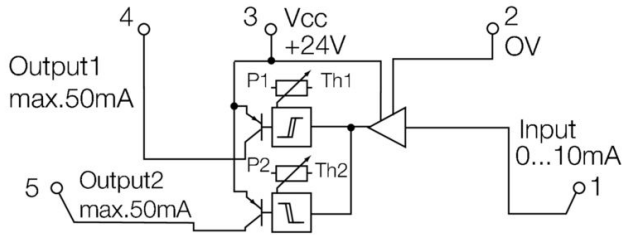
MCZ SC 0-10V

Weidmüller Interface GmbH & Co. KG
 Klingenbergstraße 26
 D-32758 Detmold
 Germany

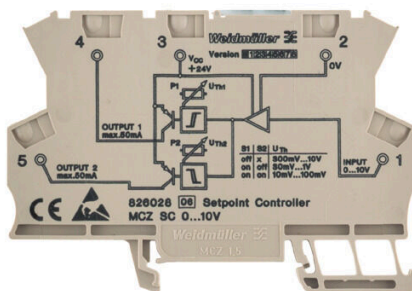
www.weidmueller.com

Drawings

Connection diagram



dimensions



MCZ SC 0-10V

Weidmüller Interface GmbH & Co. KG

Klingenbergstraße 26

D-32758 Detmold

Germany

www.weidmueller.com

Accessories

End bracket



Weidmüller's range of products includes end brackets that guarantee a permanent, reliable mounting on the terminal rail and prevent sliding. Versions with and without screws are available. The end brackets include marking options, also for group markers, and also a test plug holder.

General ordering data

Type	EW 35	Version	
Order No.	0383560000	End bracket, beige, TS 35, V-2, Wemid, Width: 8.5 mm, 100 °C	
GTIN (EAN)	4008190181314		
Qty.	50 ST		

Cross-connections



The distribution or multiplication of a potential to adjoining terminal blocks is realized via a cross-connection. Additional wiring effort can be easily avoided. Even if the poles are broken out, contact reliability in the terminal blocks is still ensured. Our portfolio offers pluggable and screwable cross-connection systems for modular terminal blocks.

General ordering data

Type	ZQV 4N/10 GE	Version	
Order No.	1758260000	W-Series, Cross-connector, 32 A	
GTIN (EAN)	4032248169764		
Qty.	20 ST		

AP MCZ 1.5 - End plate



Open miniature housing in modular terminal format with five tension clamp connections. A transparent hinged top plate can be used for labelling and provides access to potentiometer and status displays. Plug-in cross-connectors can be used to interconnect the three top connections. A cover plate for closing off the housing is also available.

General ordering data

Type	AP MCZ1.5 1674	Version	
Order No.	8389030000	End plate, OMNIMATE Housing - TERMINALBOX grey-beige, End plate, Width: 1.5 mm	
GTIN (EAN)	4008190386849		
Qty.	50 ST		

MCZ SC 0-10V

Weidmüller Interface GmbH & Co. KG

Klingenbergstraße 26

D-32758 Detmold

Germany

www.weidmueller.com

Accessories

Blank



WS markers are the perfect match for the W-series connectors. Thanks to their system compatibility, the WS tags can also be used with the I-series and the Z-series. The large marking surfaces do not only permit long character strings but also multi-line text. WS markers are ideal for labels with long, customised character strings. Thanks to the proven MultiCard format, printing with PrintJet CONNECT oder/or Plotter is possible.

- Can be fitted in strips or individually
- Markers in proven MultiCard format

For custom printing: Please send us a file of our labeling software M-Print PRO or M-Print PRO Online (without installation) for your labeling specifications.

General ordering data

Type	WS 10/6 MC NE WS	Version
Order No.	1828450000	WS, Terminal marker, 10 x 6 mm, Pitch in mm (P): 6.00 Weidmueller,
GTIN (EAN)	4032248350513	Allen-Bradley, white
Qty.	600 ST	

Cross-connections



The distribution or multiplication of a potential to adjoining terminal blocks is realized via a cross-connection. Additional wiring effort can be easily avoided. Even if the poles are broken out, contact reliability in the terminal blocks is still ensured. Our portfolio offers pluggable and screwable cross-connection systems for modular terminal blocks.

General ordering data

Type	ZQV 4N/2	Version
Order No.	1527930000	Cross-connector (terminal), Plugged, orange, 32 A, Number of poles: 2, Pitch in mm (P): 6.10, Insulated: Yes, Width: 9.9 mm
GTIN (EAN)	4050118332766	
Qty.	60 ST	
Type	ZQV 4N/3	Version
Order No.	1527940000	Cross-connector (terminal), Plugged, orange, 32 A, Number of poles: 3, Pitch in mm (P): 6.10, Insulated: Yes, Width: 16 mm
GTIN (EAN)	4050118332865	
Qty.	60 ST	
Type	ZQV 4N/4	Version
Order No.	1527970000	Cross-connector (terminal), Plugged, orange, 32 A, Number of poles: 4, Pitch in mm (P): 6.10, Insulated: Yes, Width: 22.1 mm
GTIN (EAN)	4050118332889	
Qty.	60 ST	
Type	ZQV 4N/5	Version
Order No.	1527980000	Cross-connector (terminal), Plugged, orange, 32 A, Number of poles: 5, Pitch in mm (P): 6.10, Insulated: Yes, Width: 28.2 mm
GTIN (EAN)	4050118332759	
Qty.	60 ST	