

## RS SD25S LP3R

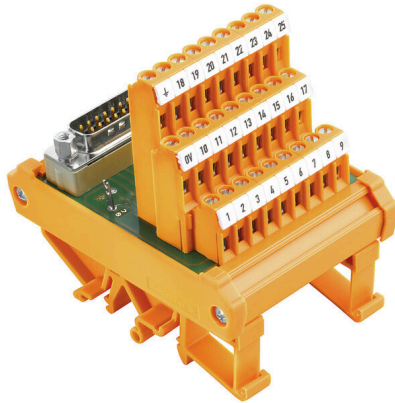
**Weidmüller Interface GmbH & Co. KG**

Klingenbergstraße 26

D-32758 Detmold

Germany

[www.weidmueller.com](http://www.weidmueller.com)



Passive interfaces for signal transmission on a SubD connector equipped with a clamping-yoke connection in accordance with IEC 807-2 / DIN 41652. The main features include:

- Group with 9-, 15-, 37- and 50-pole male and female connectors.
- One-to-one electrical connection between controller and field connections.
- Very compact triple-level modules can be attached to conventional TS35 or TS32 mounting rails.
- Pin on SubD for the earth connection.

### General ordering data

Version	Interface, RSSD, D-sub connectors, acc. to IEC 60807 / DIN 41652, 25-pole plug, Screw connection
Order No.	<a href="#">8019950000</a>
Type	RS SD25S LP3R
GTIN (EAN)	4008190140878
Qty.	1 items

## RS SD25S LP3R

Weidmüller Interface GmbH &amp; Co. KG

Klingenbergstraße 26

D-32758 Detmold

Germany

www.weidmueller.com

## Technical data

## Approvals

Approvals



ROHS Conform

UL File Number Search [UL Website](#)

Certificate No. (UR) E141197

## Dimensions and weights

Depth	80 mm	Depth (inches)	3.1496 inch
Height	87 mm	Height (inches)	3.4252 inch
Width	60 mm	Width (inches)	2.3622 inch
Net weight	159 g		

## Temperatures

Storage temperature	-40...70 °C	Operating temperature	0...55 °C
---------------------	-------------	-----------------------	-----------

## Environmental Product Compliance

RoHS Compliance Status	Compliant with exemption		
RoHS Exemption (if applicable/known)	6aI, 6c		
REACH SVHC	Lead 7439-92-1		
SCIP	7b5ffb72-271d-4c73-8b09-bd0aaee3697a		

## Rated data UL

Rated current I <sub>N</sub>	1 A	Operating temperature UL, min.	0 °C
Operating temperature UL, max.	25 °C	Rated current I <sub>max</sub>	1 A
Rated voltage U <sub>N</sub>	64 V		

## Connection Data

Number of poles (control side)	25-pole plug	Protective earth connection	Flat-blade contact
Connection (field side)	LL3R 5.08 mm	Earthing	Yes
Connection on control side	D-sub connectors, acc. to IEC 60807 / DIN 41652		

## Rating data

Rated voltage	100 V	Rated current per connection	1.5 A
---------------	-------	------------------------------	-------

## Insulation coordination (EN50178)

According to	DIN EN 50178	Rated insulation voltage	100 V
Surge voltage category	II	Pollution severity level	2
Pulse voltage test (1,2/50µs)	0.8 kV		

## Connection field

Min. wire cross-section, AWG	AWG 26	Type of connection	Screw connection
Sleeve with plastic collar, max.	2.5 mm <sup>2</sup>	Flexible with sleeve, min.	0.5 mm <sup>2</sup>
Flexible with sleeve, max.	2.5 mm <sup>2</sup>	Flexible, max. H05(07) V-K	4 mm <sup>2</sup>
Flexible, min. H05(07) V-K	0.5 mm <sup>2</sup>	Solid, max. H05(07) V-U	6 mm <sup>2</sup>

**RS SD25S LP3R****Weidmüller Interface GmbH & Co. KG**Klingenbergstraße 26  
D-32758 Detmold  
Germany[www.weidmueller.com](http://www.weidmueller.com)**Technical data**

Solid, min. H05(07) V-U	0.5 mm <sup>2</sup>	Stripping length	6 mm
Tightening torque, max.	0.6 Nm	Tightening torque, min.	0.5 Nm
Clamping range, max.	6 mm <sup>2</sup>	Clamping range, min.	0.5 mm <sup>2</sup>
Max. wire cross-section, AWG	AWG 12		

**Standard features**

Design	Plug
--------	------

**Classifications**

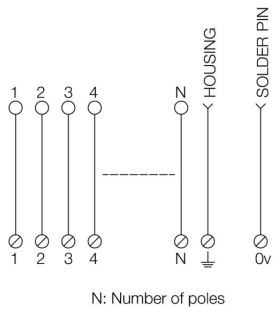
ETIM 8.0	EC002780	ETIM 9.0	EC002780
ETIM 10.0	EC002780	ECLASS 14.0	27-14-11-52
ECLASS 15.0	27-14-11-52		

**RS SD25S LP3R**

**Weidmüller Interface GmbH & Co. KG**  
Klingenbergstraße 26  
D-32758 Detmold  
Germany

**Drawings**

[www.weidmueller.com](http://www.weidmueller.com)



## RS SD25S LP3R

**Weidmüller Interface GmbH & Co. KG**  
 Klingenbergstraße 26  
 D-32758 Detmold  
 Germany

www.weidmueller.com

## Accessories

### Steel



Steel DIN rails are the most widespread on the market. Among metal DIN rails, they have the lowest shortcircuit protection, similar to stainless steel.

#### General ordering data

Type	TS 32X15 2M/ST/ZN	Version	
Order No.	<a href="#">0122800000</a>	Terminal rail, Accessories, Steel, galvanic zinc plated and passivated,	
GTIN (EAN)	4008190066307	Width: 2000 mm, Height: 33 mm, Depth: 15 mm	
Qty.	20 M		

### Aluminum

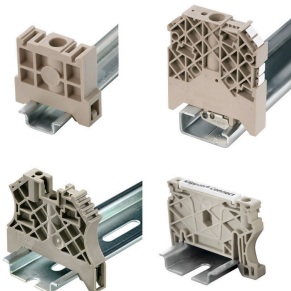


Aluminum has the second best electrical conductivity after copper. One advantage is low weight, another is outstanding corrosion protection.

#### General ordering data

Type	TS 32X15 2M/AL/BK	Version	
Order No.	<a href="#">0169300000</a>	Terminal rail, Accessories, Aluminium, untreated, Width: 2000 mm,	
GTIN (EAN)	4008190105167	Height: 33 mm, Depth: 15 mm	
Qty.	20 M		

### End bracket



Weidmüller's range of products includes end brackets that guarantee a permanent, reliable mounting on the terminal rail and prevent sliding. Versions with and without screws are available. The end brackets include marking options, also for group markers, and also a test plug holder.

#### General ordering data

Type	EWK 2	Version	
Order No.	<a href="#">0199360000</a>	End bracket, beige, TS 32, V-0, Wemid, Width: 15 mm, 100 °C	
GTIN (EAN)	4008190023546		
Qty.	50 ST		

## RS SD25S LP3R

**Weidmüller Interface GmbH & Co. KG**  
 Klingenbergstraße 26  
 D-32758 Detmold  
 Germany

www.weidmueller.com

## Accessories

Type	EWK 1	Version
Order No.	<a href="#">0206160000</a>	End bracket, beige, TS 32, V-0, Wemid, Width: 9 mm, 100 °C
GTIN (EAN)	4008190080020	
Qty.	50 ST	

## Steel



Steel DIN rails are the most widespread on the market. Among metal DIN rails, they have the lowest shortcircuit protection, similar to stainless steel.

### General ordering data

Type	TS 35X15 2M/ST/ZN	Version
Order No.	<a href="#">0236400000</a>	Terminal rail, Accessories, Steel, galvanic zinc plated and passivated,
GTIN (EAN)	4008190114558	Width: 2000 mm, Height: 35 mm, Depth: 15 mm
Qty.	20 M	
Type	TS 35X15/LL 2M/ST/ZN	Version
Order No.	<a href="#">0236500000</a>	Terminal rail, Accessories, Steel, galvanic zinc plated and passivated,
GTIN (EAN)	4008190183967	Width: 2000 mm, Height: 35 mm, Depth: 15 mm
Qty.	20 M	
Type	TS 35X15/LL 1M/ST/ZN	Version
Order No.	<a href="#">0236510000</a>	Terminal rail, Accessories, Steel, galvanic zinc plated and passivated,
GTIN (EAN)	4008190017699	Width: 1000 mm, Height: 35 mm, Depth: 15 mm
Qty.	20 M	

## Aluminum



Aluminum has the second best electrical conductivity after copper. One advantage is low weight, another is outstanding corrosion protection.

### General ordering data

Type	TS 35X7.5 2M/AL/BK	Version
Order No.	<a href="#">0330800000</a>	Terminal rail, Accessories, Aluminium, untreated, Width: 2000 mm,
GTIN (EAN)	4008190100650	Height: 35 mm, Depth: 7.5 mm
Qty.	40 M	

## RS SD25S LP3R

**Weidmüller Interface GmbH & Co. KG**  
 Klingenbergstraße 26  
 D-32758 Detmold  
 Germany

www.weidmueller.com

## Accessories

## Steel

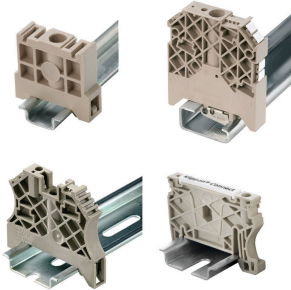


Steel DIN rails are the most widespread on the market. Among metal DIN rails, they have the lowest shortcircuit protection, similar to stainless steel.

## General ordering data

Type	TS 35X7.5 2M/ST/ZN	Version	
Order No.	<a href="#">0383400000</a>	Terminal rail, Accessories, Steel, galvanic zinc plated and passivated,	
GTIN (EAN)	4008190088026	Width: 2000 mm, Height: 35 mm, Depth: 7.5 mm	
Qty.	40 M		
Type	TS 35X7.5 1M/ST/ZN	Version	
Order No.	<a href="#">0383410000</a>	Terminal rail, Accessories, Steel, galvanized, chromium-plated, Width:	
GTIN (EAN)	4008190115623	1000 mm, Height: 35 mm, Depth: 7.5 mm	
Qty.	20 M		

## End bracket



Weidmüller's range of products includes end brackets that guarantee a permanent, reliable mounting on the terminal rail and prevent sliding. Versions with and without screws are available. The end brackets include marking options, also for group markers, and also a test plug holder.

## General ordering data

Type	EW 35	Version	
Order No.	<a href="#">0383560000</a>	End bracket, beige, TS 35, V-2, Wemid, Width: 8.5 mm, 100 °C	
GTIN (EAN)	4008190181314		
Qty.	50 ST		
Type	EWK 1 ALT	Version	
Order No.	<a href="#">0495160000</a>	End bracket, beige, TS 32, V-2, Polyamide 66, Width: 8 mm, 100 °C	
GTIN (EAN)	4008190160777		
Qty.	50 ST		

## RS SD25S LP3R

**Weidmüller Interface GmbH & Co. KG**  
 Klingenbergstraße 26  
 D-32758 Detmold  
 Germany

## Accessories

www.weidmueller.com

## Steel

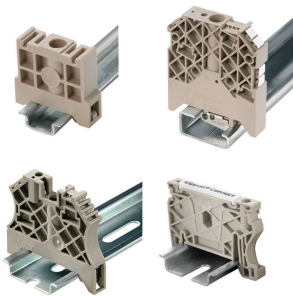


Steel DIN rails are the most widespread on the market. Among metal DIN rails, they have the lowest shortcircuit protection, similar to stainless steel.

## General ordering data

Type	TS 35X15/2.3 2M/ST/ZN	Version
Order No.	<a href="#">0498000000</a>	Terminal rail, Accessories, Steel, galvanic zinc plated and passivated,
GTIN (EAN)	4008190042493	Width: 2000 mm, Height: 35 mm, Depth: 15 mm
Qty.	20 M	
Type	TS 32X15/LL 2M/ST/ZN	Version
Order No.	<a href="#">0514400000</a>	Terminal rail, Accessories, Steel, galvanic zinc plated and passivated,
GTIN (EAN)	4008190086152	Width: 2000 mm, Height: 33 mm, Depth: 15 mm
Qty.	20 M	
Type	TS 35X7.5/LL 2M/ST/ZN	Version
Order No.	<a href="#">0514500000</a>	Terminal rail, Accessories, Steel, galvanic zinc plated and passivated,
GTIN (EAN)	4008190046019	Width: 2000 mm, Height: 35 mm, Depth: 7.5 mm
Qty.	40 M	
Type	TS 35X7.5/LL 1M/ST/ZN	Version
Order No.	<a href="#">0514510000</a>	Terminal rail, Accessories, Steel, galvanic zinc plated and passivated,
GTIN (EAN)	4008190116620	Width: 1000 mm, Height: 35 mm, Depth: 7.5 mm
Qty.	20 M	

## End bracket



Weidmüller's range of products includes end brackets that guarantee a permanent, reliable mounting on the terminal rail and prevent sliding. Versions with and without screws are available. The end brackets include marking options, also for group markers, and also a test plug holder.

## General ordering data

Type	WEW 32/1	Version
Order No.	<a href="#">1067600000</a>	End bracket, dark beige, TS 32, V-2, PA 66 GF 30, Width: 12 mm,
GTIN (EAN)	4008190099657	100 °C
Qty.	50 ST	