

RS SD50B LP3R

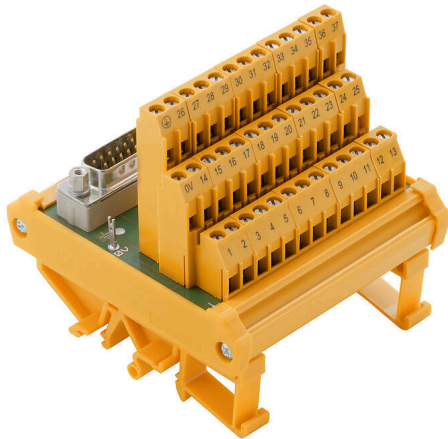
Weidmüller Interface GmbH & Co. KG

Klingenbergstraße 26

D-32758 Detmold

Germany

www.weidmueller.com



Similar to illustration

Passive interfaces for signal transmission on a SubD connector equipped with a clamping-yoke connection in accordance with IEC 807-2 / DIN 41652. The main features include:

- Group with 9-, 15-, 37- and 50-pole male and female connectors.
- One-to-one electrical connection between controller and field connections.
- Very compact triple-level modules can be attached to conventional TS35 or TS32 mounting rails.
- Pin on SubD for the earth connection.

General ordering data

Version	Interface, RSSD, D-sub connectors, acc. to IEC 60807 / DIN 41652, 50-pole female, Screw connection
Order No.	8019920000
Type	RS SD50B LP3R
GTIN (EAN)	4008190108922
Qty.	1 items

RS SD50B LP3R

Weidmüller Interface GmbH & Co. KG

Klingenbergstraße 26
D-32758 Detmold
Germany

www.weidmueller.com

Technical data

Approvals

Approvals



ROHS	Conform
UL File Number Search	UL Website
Certificate No. (UR)	E141197

Dimensions and weights

Depth	80 mm	Depth (inches)	3.1496 inch
Height	87 mm	Height (inches)	3.4252 inch
Width	145 mm	Width (inches)	5.7086 inch
Net weight	265 g		

Temperatures

Storage temperature	-40...70 °C	Operating temperature	0...55 °C
---------------------	-------------	-----------------------	-----------

Environmental Product Compliance

RoHS Compliance Status	Compliant with exemption
RoHS Exemption (if applicable/known)	6aI, 6c
REACH SVHC	Lead 7439-92-1
SCIP	7b5ffb72-271d-4c73-8b09-bd0aaee3697a

Rated data UL

Rated current IN	1 A	Operating temperature UL, min.	0 °C
Operating temperature UL, max.	25 °C	Rated current I _{max}	1 A
Rated voltage UN	64 V		

Connection Data

Number of poles (control side)	50-pole female	Protective earth connection	Flat-blade contact
Connection (field side)	LL3R 5.08 mm	Earthing	Yes
Connection on control side	D-sub connectors, acc. to IEC 60807 / DIN 41652		

Rating data

Rated voltage	100 V	Rated current per connection	1.5 A
---------------	-------	------------------------------	-------

Insulation coordination (EN50178)

According to	DIN EN 50178	Rated insulation voltage	100 V
Surge voltage category	II	Pollution severity level	2
Pulse voltage test (1,2/50µs)	0.8 kV		

Connection field

Min. wire cross-section, AWG	AWG 26	Type of connection	Screw connection
Sleeve with plastic collar, max.	2.5 mm ²	Flexible with sleeve, min.	0.5 mm ²
Flexible with sleeve, max.	2.5 mm ²	Flexible, max. H05(07) V-K	4 mm ²
Flexible, min. H05(07) V-K	0.5 mm ²	Solid, max. H05(07) V-U	6 mm ²

RS SD50B LP3R

Weidmüller Interface GmbH & Co. KG
 Klingenbergstraße 26
 D-32758 Detmold
 Germany

www.weidmueller.com

Technical data

Solid, min. H05(07) V-U	0.5 mm ²	Stripping length	6 mm
Tightening torque, max.	0.6 Nm	Tightening torque, min.	0.5 Nm
Clamping range, max.	6 mm ²	Clamping range, min.	0.5 mm ²
Max. wire cross-section, AWG	AWG 12		

Standard features

Design	Socket connector
--------	------------------

Classifications

ETIM 8.0	EC002780	ETIM 9.0	EC002780
ETIM 10.0	EC002780	ECLASS 14.0	27-14-11-52
ECLASS 15.0	27-14-11-52		

RS SD50B LP3R

Weidmüller Interface GmbH & Co. KG
Klingenbergstraße 26
D-32758 Detmold
Germany

Drawings

www.weidmueller.com



RS SD50B LP3R

Weidmüller Interface GmbH & Co. KG

Klingenbergstraße 26

D-32758 Detmold

Germany

www.weidmueller.com

Accessories

Steel



Steel DIN rails are the most widespread on the market. Among metal DIN rails, they have the lowest shortcircuit protection, similar to stainless steel.

General ordering data

Type	TS 32X15 2M/ST/ZN	Version	
Order No.	0122800000	Terminal rail, Accessories, Steel, galvanic zinc plated and passivated,	
GTIN (EAN)	4008190066307	Width: 2000 mm, Height: 33 mm, Depth: 15 mm	
Qty.	20 M		

Aluminum

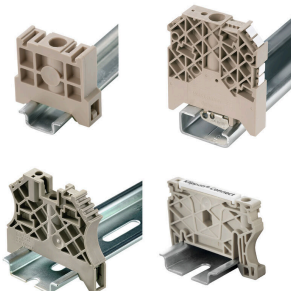


Aluminum has the second best electrical conductivity after copper. One advantage is low weight, another is outstanding corrosion protection.

General ordering data

Type	TS 32X15 2M/AL/BK	Version	
Order No.	0169300000	Terminal rail, Accessories, Aluminium, untreated, Width: 2000 mm,	
GTIN (EAN)	4008190105167	Height: 33 mm, Depth: 15 mm	
Qty.	20 M		

End bracket



Weidmüller's range of products includes end brackets that guarantee a permanent, reliable mounting on the terminal rail and prevent sliding. Versions with and without screws are available. The end brackets include marking options, also for group markers, and also a test plug holder.

General ordering data

Type	EWK 2	Version	
Order No.	0199360000	End bracket, beige, TS 32, V-0, Wemid, Width: 15 mm, 100 °C	
GTIN (EAN)	4008190023546		
Qty.	50 ST		

RS SD50B LP3R

Weidmüller Interface GmbH & Co. KG
 Klingenbergstraße 26
 D-32758 Detmold
 Germany

www.weidmueller.com

Accessories

Type	EWK 1	Version
Order No.	0206160000	End bracket, beige, TS 32, V-0, Wemid, Width: 9 mm, 100 °C
GTIN (EAN)	4008190080020	
Qty.	50 ST	

Steel



Steel DIN rails are the most widespread on the market. Among metal DIN rails, they have the lowest shortcircuit protection, similar to stainless steel.

General ordering data

Type	TS 35X15 2M/ST/ZN	Version
Order No.	0236400000	Terminal rail, Accessories, Steel, galvanic zinc plated and passivated, Width: 2000 mm, Height: 35 mm, Depth: 15 mm
GTIN (EAN)	4008190114558	
Qty.	20 M	
Type	TS 35X15/LL 2M/ST/ZN	Version
Order No.	0236500000	Terminal rail, Accessories, Steel, galvanic zinc plated and passivated, Width: 2000 mm, Height: 35 mm, Depth: 15 mm
GTIN (EAN)	4008190183967	
Qty.	20 M	
Type	TS 35X15/LL 1M/ST/ZN	Version
Order No.	0236510000	Terminal rail, Accessories, Steel, galvanic zinc plated and passivated, Width: 1000 mm, Height: 35 mm, Depth: 15 mm
GTIN (EAN)	4008190017699	
Qty.	10 M	

Aluminum



Aluminum has the second best electrical conductivity after copper. One advantage is low weight, anMiscellaneous is outstanding corrosion protection.

General ordering data

Type	TS 35X7.5 2M/AL/BK	Version
Order No.	0330800000	Terminal rail, Accessories, Aluminium, untreated, Width: 2000 mm, Height: 35 mm, Depth: 7.5 mm
GTIN (EAN)	4008190100650	
Qty.	40 M	

RS SD50B LP3R

Weidmüller Interface GmbH & Co. KG
 Klingenbergstraße 26
 D-32758 Detmold
 Germany

www.weidmueller.com

Accessories

Steel

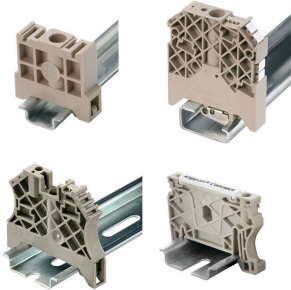


Steel DIN rails are the most widespread on the market. Among metal DIN rails, they have the lowest shortcircuit protection, similar to stainless steel.

General ordering data

Type	TS 35X7.5 2M/ST/ZN	Version	
Order No.	0383400000	Terminal rail, Accessories, Steel, galvanic zinc plated and passivated,	
GTIN (EAN)	4008190088026	Width: 2000 mm, Height: 35 mm, Depth: 7.5 mm	
Qty.	40 M		
Type	TS 35X7.5 1M/ST/ZN	Version	
Order No.	0383410000	Terminal rail, Accessories, Steel, galvanized, chromium-plated, Width:	
GTIN (EAN)	4008190115623	1000 mm, Height: 35 mm, Depth: 7.5 mm	
Qty.	20 M		

End bracket



Weidmüller's range of products includes end brackets that guarantee a permanent, reliable mounting on the terminal rail and prevent sliding. Versions with and without screws are available. The end brackets include marking options, also for group markers, and also a test plug holder.

General ordering data

Type	EW 35	Version	
Order No.	0383560000	End bracket, beige, TS 35, V-2, Wemid, Width: 8.5 mm, 100 °C	
GTIN (EAN)	4008190181314		
Qty.	50 ST		
Type	EWK 1 ALT	Version	
Order No.	0495160000	End bracket, beige, TS 32, V-2, Polyamide 66, Width: 8 mm, 100 °C	
GTIN (EAN)	4008190160777		
Qty.	50 ST		

RS SD50B LP3R

Weidmüller Interface GmbH & Co. KG
 Klingenbergstraße 26
 D-32758 Detmold
 Germany

Accessories

www.weidmueller.com

Steel



Steel DIN rails are the most widespread on the market. Among metal DIN rails, they have the lowest shortcircuit protection, similar to stainless steel.

General ordering data

Type	TS 35X15/2.3 2M/ST/ZN	Version
Order No.	0498000000	Terminal rail, Accessories, Steel, galvanic zinc plated and passivated,
GTIN (EAN)	4008190042493	Width: 2000 mm, Height: 35 mm, Depth: 15 mm
Qty.	20 M	
Type	TS 32X15/LL 2M/ST/ZN	Version
Order No.	0514400000	Terminal rail, Accessories, Steel, galvanic zinc plated and passivated,
GTIN (EAN)	4008190086152	Width: 2000 mm, Height: 33 mm, Depth: 15 mm
Qty.	20 M	
Type	TS 35X7.5/LL 2M/ST/ZN	Version
Order No.	0514500000	Terminal rail, Accessories, Steel, galvanic zinc plated and passivated,
GTIN (EAN)	4008190046019	Width: 2000 mm, Height: 35 mm, Depth: 7.5 mm
Qty.	40 M	
Type	TS 35X7.5/LL 1M/ST/ZN	Version
Order No.	0514510000	Terminal rail, Accessories, Steel, galvanic zinc plated and passivated,
GTIN (EAN)	4008190116620	Width: 1000 mm, Height: 35 mm, Depth: 7.5 mm
Qty.	20 M	

End bracket



Weidmüller's range of products includes end brackets that guarantee a permanent, reliable mounting on the terminal rail and prevent sliding. Versions with and without screws are available. The end brackets include marking options, also for group markers, and also a test plug holder.

General ordering data

Type	WEW 32/1	Version
Order No.	1067600000	End bracket, dark beige, TS 32, V-2, PA 66 GF 30, Width: 12 mm,
GTIN (EAN)	4008190099657	100 °C
Qty.	50 ST	