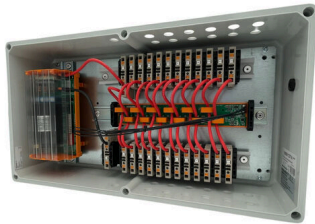


PV 224SXFXCXXVXO3TA1PA15LWW

Weidmüller Interface GmbH & Co. KG
 Klingenbergstraße 26
 D-32758 Detmold
 Germany

www.weidmueller.com



Intelligent product in a compact size

PV retrofit monitoring boxes make it possible to obtain data at string level in PV systems with existing, unmonitored PV-DC generator combiner boxes. All without additional work such as trenching and cabling.

Integrated power monitoring provided by our Solar SMS monitoring system allows to do the right surveillance of the PV site to guarantee the best performance of the system.

Additionally, our PV monitoring boxes fulfill the standard IEC/EN 61439-2:2020 to guarantee a high reliability of the supplied units.

General ordering data

Version	Photovoltaics, 1500 V, Cable gland, for wall mounting, Landscape, Digital signals, Monitoring components, Current monitoring, Voltage monitoring, Temperature monitoring, 24-channel
Order No.	8000135051
Type	PV 224SXFXCXXVXO3TA1PA15LWW
GTIN (EAN)	4099987056236
Qty.	1 items

PV 224SXFXCXXVXO3TA1PA15LWW

Weidmüller Interface GmbH & Co. KG
 Klingenbergstraße 26
 D-32758 Detmold
 Germany

www.weidmueller.com

Technical data

Approvals

Approvals



ROHS Conform

Dimensions and weights

Depth	210 mm	Depth (inches)	8.2677 inch
Height	302 mm	Height (inches)	11.8897 inch
Width	558 mm	Width (inches)	21.9685 inch
Net weight	7714.18 g		

Temperatures

Ambient temperature -20 °C...45 °C

Environmental Product Compliance

RoHS Compliance Status	Compliant with exemption
RoHS Exemption (if applicable/known)	6a1, 7a, 7cl
REACH SVHC	Lead 7439-92-1
SCIP	1d28ada4-1634-4382-8635-45f6353a6574

DC electrical properties

Rated voltage 1500 V Surge protection DC side No surge protection

DC inputs

Fuse protection	No		
Number of DC inputs	24		
Connection type, DC input cable	Cable gland		
Connection DC input cable (-)	PUSH IN		
DC Input + & -	Wire connection	Type of connection	PUSH IN
		Wire cross-section, min.	0.5 mm ²
		Wire cross-section, max.	6 mm ²
	Cable entry	Number of cable entries	24
		Cable diameter, min.	5 mm
		Cable diameter, max.	7 mm
Connection DC input cable (+)	PUSH IN		
Fuse type	Neither fuse cartridge nor holder		
Type of fuse	Neither fuse cartridge nor holder		

DC outputs

DC output cable connection	Cable gland		
Connection type, DC output cable	PUSH IN		
DC Output + & -	Wire connection	Type of connection	PUSH IN
		Wire cross-section, min.	0.5 mm ²

PV 224SXFXCXXVXO3TA1PA15LWW

Weidmüller Interface GmbH & Co. KG
 Klingenbergstraße 26
 D-32758 Detmold
 Germany

www.weidmueller.com

Technical data

Number of DC outputs	24	Wire cross-section, max.	6 mm ²
----------------------	----	--------------------------	-------------------

DC string monitoring

Supply	Self-powered	Monitoring function	Solar SMS, Output voltage, current, temperature
Voltage monitoring	Solar SMS	Temperature monitoring	Solar SMS
Current monitoring	Solar SMS		

Housing

Type of mounting	Wall mounting	Protection degree	IP65
------------------	---------------	-------------------	------

Norms and standards

Standards	IEC 61439-2 ed 3.0, EN 61439-2:2020
-----------	-------------------------------------

Guarantee

Time interval	5 years
---------------	---------

Classifications

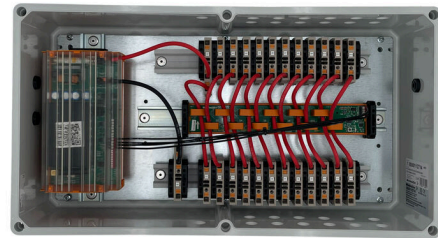
ETIM 8.0	EC003857	ETIM 9.0	EC003857
ETIM 10.0	EC003857	ECLASS 14.0	22-57-02-92
ECLASS 15.0	22-57-02-92		

PV 224SXFXCXXVXO3TA1PA15LWW

Weidmüller Interface GmbH & Co. KG
 Klingenbergstraße 26
 D-32758 Detmold
 Germany

Drawings

www.weidmueller.com



Combiner Box Name Description

PV 2 24 S0 FX CXX VX OX TXPX 15 P F ES

