

PV 216S0F3CXXV000TXPX15LWW

Weidmüller Interface GmbH & Co. KG
 Klingenbergstraße 26
 D-32758 Detmold
 Germany

www.weidmueller.com



Standard portfolio for combiner boxes.
 Protect and monitor strings in a solar park.
 Weidmüller has developed a full portfolio of standard PV DC combiner boxes for solar parks. These products intend to cover the most common used solutions for such purposes in an efficient and competitive manner. From 6 up to 32 inputs our Generation X offers a full range of products for monitored and non-monitored combiner boxes allowing our customer to benefit from Weidmueller's experience and commitment to quality. Gen X

General ordering data

| | |
|------------|---|
| Version | Photovoltaics, Assembled enclosure, Combiner Box, 1500 V, With fuse holder, Surge protection II, Cable gland, for wall mounting, Switch disconnecter, Landscape, Central Inverter |
| Order No. | 8000119547 |
| Type | PV 216S0F3CXXV000TXPX15LWW |
| GTIN (EAN) | 4099986829565 |
| Qty. | 1 items |

PV 216S0F3CXXV000TXPX15LWW

Weidmüller Interface GmbH & Co. KG
 Klingenbergstraße 26
 D-32758 Detmold
 Germany

www.weidmueller.com

Technical data

Approvals

Approvals



ROHS Conform

Dimensions and weights

| | | | |
|------------|------------|-----------------|--------------|
| Depth | 300 mm | Depth (inches) | 11.811 inch |
| Height | 636 mm | Height (inches) | 25.0393 inch |
| Width | 847 mm | Width (inches) | 33.3464 inch |
| Net weight | 16504.19 g | | |

Temperatures

| | | | |
|---------------------|----------------|-----------------------|-----------------|
| Ambient temperature | -20 °C...45 °C | Operating temperature | -20°C to +45 °C |
|---------------------|----------------|-----------------------|-----------------|

Environmental Product Compliance

| | |
|--------------------------------------|--------------------------------------|
| RoHS Compliance Status | Compliant with exemption |
| RoHS Exemption (if applicable/known) | 6c |
| REACH SVHC | Lead 7439-92-1 |
| SCIP | 1d28ada4-1634-4382-8635-45f6353a6574 |

DC electrical properties

| | | | |
|---------------|---------------------|--------------------------|------------------------------------|
| Rated voltage | 1500 V | Switching capacity | 400 A (DC21B 1500 V) |
| Earthing | Directly at the VPU | Surge protection DC side | 1500 V type II with remote contact |

DC inputs

| | | | |
|---------------------------------|------------------------------------|-------------------------|-------------------------|
| Cartridge fuse | 10 x 85 mm | | |
| Fuse protection | 15 A, 16 A, 20 A, 25 A, 30 A, 32 A | | |
| Number of DC inputs | 16 | | |
| Fused poles of string | +/- | | |
| Connection type, DC input cable | Cable gland | | |
| Connection DC input cable (-) | Screw connection | | |
| Fuse-link standard | gPV (EN 60269-6) | | |
| Functional earth connector | Cable entry | Number of cable entries | 1 |
| | | Cable diameter, min. | 6 mm |
| | | Cable diameter, max. | 12 mm |
| | Wire connection | Type of connection | M20 Cable gland |
| Number of inputs | 16 | | |
| Number of conduit inlets | 35 | | |
| DC Input + & - | Wire connection | Type of connection | M16 Cable gland |
| | | Cable entry | Number of cable entries |
| | Cable entry | Cable diameter, min. | 5 mm |
| | | Cable diameter, max. | 10 mm |
| Connection DC input cable (+) | Screw connection | | |
| Fuse type | Empty fuse holder | | |
| Position of the fuses | positive and negative inputs | | |
| Type of fuse | Empty fuse holder | | |

PV 216S0F3CXXV000TXPX15LWW

Weidmüller Interface GmbH & Co. KG
 Klingenbergstraße 26
 D-32758 Detmold
 Germany

www.weidmueller.com

Technical data

DC outputs

| | | | |
|---|-----------------|-----------------------------|---------------------|
| DC output cable connection | | M12 bolt and nut connection | |
| DC Output + & - | Wire connection | Type of connection | M40 Cable gland |
| | | Wire cross-section, min. | 150 mm ² |
| | | Wire cross-section, max. | 300 mm ² |
| Number of DC outputs | 2 | | |
| Load circuit breaker with auxiliary contact | No | | |

DC string monitoring

| | |
|---------------------|---------------|
| Monitoring function | Non monitored |
|---------------------|---------------|

Housing

| | | | |
|------------------|---------------|-------------------|------|
| Type of mounting | Wall mounting | Protection degree | IP66 |
|------------------|---------------|-------------------|------|

Norms and standards

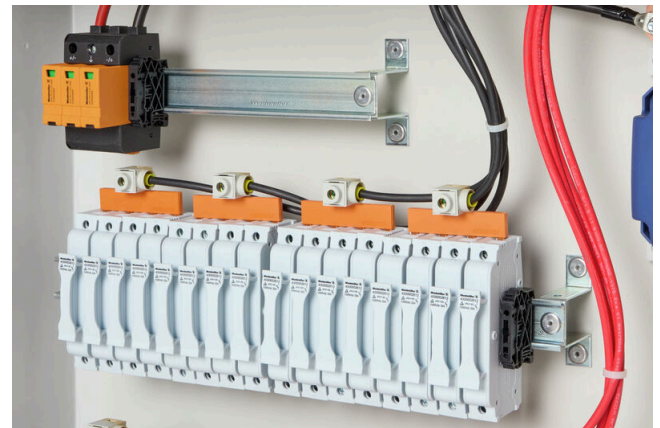
| | |
|-----------|-------------------------------------|
| Standards | EN 61439-2:2011, IEC 61439-2 ed 3.0 |
|-----------|-------------------------------------|

Guarantee

| | |
|---------------|---------|
| Time interval | 5 years |
|---------------|---------|

Classifications

| | | | |
|-------------|-------------|-------------|-------------|
| ETIM 8.0 | EC003857 | ETIM 9.0 | EC003857 |
| ETIM 10.0 | EC003857 | ECLASS 14.0 | 22-57-02-92 |
| ECLASS 15.0 | 22-57-02-92 | | |



PV 216S0F3CXXV000TXPX15LWW

Weidmüller Interface GmbH & Co. KG
 Klingenbergstraße 26
 D-32758 Detmold
 Germany

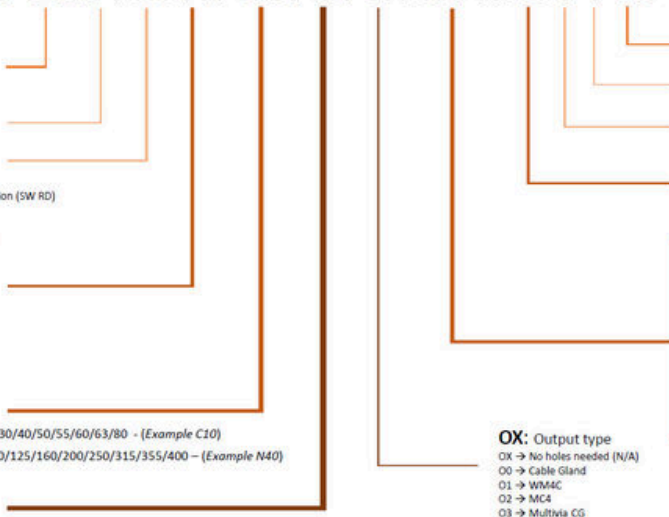
Drawings

www.weidmueller.com

Combiner Box Name Description

PV 2 24 S0 FX CXX VX OX TXPX 15 P F ES

- PV 1:** PV DC L0 Industrial
- PV 2:** PV DC L1 Industrial
- PV 3:** PV DC L2 Industrial
- Number of inputs (01-36)**
- S0:** Switch-disconnector
 S0 → Switch-disconnector (SW)
 S1 → Switch-disconnector with remote disconnection (SW RD)
 S2 → Molded Case Circuit Breaker (MCCB)
 S3 → Motorized switch-disconnector (SW M)
 S4 → Switch-disconnector with Contactor (SW K)
 SX → No Switch-disconnector needed (N/A)
- FX:** Fuses / Fuseholders position
 F0 → Fuses Both Poles
 F1 → Only Positive Fuses
 F2 → Only Negative Fuses
 F3 → Only Fuse Holders
 F4 → Only fuse holder in positive (+)
 F5 → Only fuse holder in negative (-)
 FX → No Fuse holders needed (N/A)
- CXX:** CIL Fuses Type → C 10/15/16/20/25/30/40/50/55/60/63/80 - (Example C10)
- NXX:** NH Fuses Type → N 40/50/63/80/100/125/160/200/250/315/355/400 - (Example N40)
- CXX → N/A , NXX → N/A
- VX:** SPD Type
 V0 → SPD Class II / V1 → SPD Class I+II / V2 → SPD Class I
 VX → No SPD needed (N/A)



- Country / Whole World**
- Floating:** YES (F) / NO
- P:** Portrait
- L:** Landscape
- 10:** 1000v
- 15:** 1500v
- TX:** Monitoring Device
 TX → No monitoring (N/A)
 T2 → TC 16A (1kV or 1.5kV)
 T5 → TC 2x16A
 T7 → TC 16iH
 T8 → Others
 T9 → Fronrich
 TA1 → Solar SMS (25A)
 TA2 → Solar SMS (50A)
 TA3 → Solar SMS LoRaWAN (25A)
 TA4 → Solar SMS LoRaWAN (50A)
- PX:** Power Supply for (TX)
 PX → No Power Supply Needed (N/A)
 P0 → Self-Powered (BKE)
 P1 → External Power Supply (PS ACDC)
 PA → Self-Powered (EE)

- OX:** Output type
 OX → No holes needed (N/A)
 O0 → Cable Gland
 O1 → WMAC
 O2 → MCA
 O3 → Multivia CG

