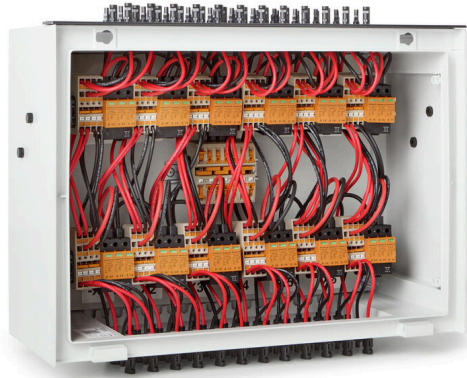


PV 124SXFXCXXV101TXPX15LWW

Weidmüller Interface GmbH & Co. KG
 Klingenbergstraße 26
 D-32758 Detmold
 Germany

www.weidmueller.com



Standard portfolio for Multi MPPT string inverters
 Protect strings and inverters against overvoltage.
 Protecting long cables and string inverter inputs (MPPT's)
 is crucial for the smooth operation of solar plant installa-
 tions whether it's a rooftop or utility scale one. For that
 purpose, Weidmueller has developed a product portfo-
 lio with a set of different cabinets which helps to protect
 the cables and/or the string DC input side of the inverter
 against potential overvoltages. These solutions allow
 installers and developers to benefit from Weidmueller's
 experience in solar PV and its commitment with quality
 standards. Multi-MMPT

General ordering data

Version	Photovoltaics, Assembled enclosure, Combiner Box, 1500 V, Surge protection I / II, WM4C, for wall mounting, Landscape, String Inverter, 12 MPP's
Order No.	8000117002
Type	PV 124SXFXCXXV101TXPX15LWW
GTIN (EAN)	4099986756199
Qty.	1 items

PV 124SXFXCXXV101TXPX15LWW

Weidmüller Interface GmbH & Co. KG
 Klingenbergstraße 26
 D-32758 Detmold
 Germany

www.weidmueller.com

Technical data

Approvals

Approvals



ROHS Conform

Dimensions and weights

Depth	300 mm	Depth (inches)	11.811 inch
Height	536 mm	Height (inches)	21.1023 inch
Width	747 mm	Width (inches)	29.4094 inch
Net weight	30400 g		

Temperatures

Ambient temperature	-20 °C...45 °C	Operating temperature	-20°C to +45°C
---------------------	----------------	-----------------------	----------------

Environmental Product Compliance

RoHS Compliance Status	Compliant
REACH SVHC	No SVHC above 0.1 wt%

DC electrical properties

Rated voltage	1500 V	Earthing	Directly at the VPU
Surge protection DC side	1500 V type I+II without remote contact		

DC inputs

Number of DC inputs	24		
Connection type, DC input cable	WM4C plug-in connector		
Connection DC input cable (-)	WM4C plug-in connector		
Amount of maximum power points (MPP)	12		
Functional earth connector	Cable entry	Number of cable entries	1
		Cable diameter, min.	6 mm
		Cable diameter, max.	12 mm
	Wire connection	Type of connection	Screw connection
Number of inputs	24		
Number of conduit inlets	1		
Connection DC input cable (+)	WM4C plug-in connector		
Fuse type	Neither fuse cartridge nor holder		
Type of fuse	Neither fuse cartridge nor holder		

DC outputs

DC output cable connection	WM4C plug-in connector	Connection type, DC output cable	WM4C plug-in connector
Number of DC outputs	24		

DC string monitoring

Monitoring function	Non monitored
---------------------	---------------

PV 124SFXCXXV101TXPX15LWW

Weidmüller Interface GmbH & Co. KG
 Klingenbergstraße 26
 D-32758 Detmold
 Germany

www.weidmueller.com

Technical data

Housing

Type of mounting	Wall mounting	Protection degree	IP65
------------------	---------------	-------------------	------

Norms and standards

Standards	IEC 61439-2 ed 3.0, EN 61439-2:2020
-----------	-------------------------------------

Guarantee

Time interval	5 years
---------------	---------

Classifications

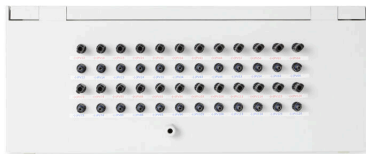
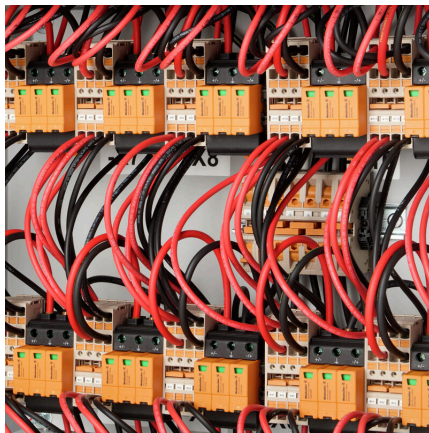
ETIM 8.0	EC003857	ETIM 9.0	EC003857
ETIM 10.0	EC003857	ECLASS 14.0	22-57-02-92
ECLASS 15.0	22-57-02-92		

PV 124SFXFCXXV101TXPX15LWW

Weidmüller Interface GmbH & Co. KG
 Klingenbergstraße 26
 D-32758 Detmold
 Germany

Drawings

www.weidmueller.com



Combiner Box Name Description
 PV 2 24 S0 FX CXX VX OX TXPX 15 P F ES

