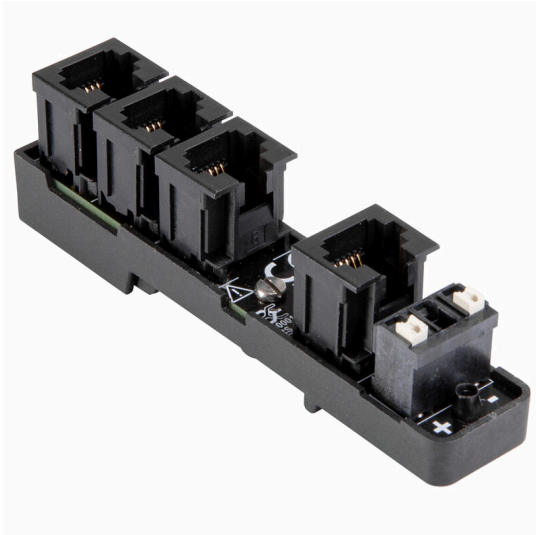


RS 4XRJ12 PS

Weidmüller Interface GmbH & Co. KG
Klingenbergstraße 26
D-32758 Detmold
Germany

www.weidmueller.com



Multiple data distributor in the meter cabinet for the TS35

General ordering data

Order No.	8000112158
Type	RS 4XRJ12 PS
GTIN (EAN)	4099987025706
Qty.	10 items

RS 4XRJ12 PS

Weidmüller Interface GmbH & Co. KG

Klingenbergstraße 26

D-32758 Detmold

Germany

www.weidmueller.com

Technical data

Approvals

Approvals



ROHS Conform

Dimensions and weights

Depth	21.5 mm	Depth (inches)	0.8465 inch
Height	93.7 mm	Height (inches)	3.689 inch
Width	17.9 mm	Width (inches)	0.7047 inch
Net weight	10 g		

Temperatures

Storage temperature	-25...70 °C	Operating temperature	-20...55 °C
Humidity at operating temperature	0...85% (no condensation)		

Environmental Product Compliance

RoHS Compliance Status	Compliant with exemption
RoHS Exemption (if applicable/known)	6c
REACH SVHC	Lead 7439-92-1
SCIP	dd6ecfa2-0f98-4cb6-b9bb-7c212c5140ca

Connection data

Distribution PCB connectors	4 x RJ12 plug-in connectors	Supply plug-in connectors	LSF-SMT 5.08/03/180 (no central pin)
-----------------------------	-----------------------------	---------------------------	--------------------------------------

Rating data

Protection degree	IP20	Rated voltage	< 150 V AC
Operating voltage	150 V AC	Maximum current per distributor connection	1 A

Insulation coordination (EN 60664-1)

Rated insulation voltage	<150 V AC	Surge voltage category	II
Pollution severity	2	Pulse voltage test (1,2/50 µs)	1.5 kV

Connection field

Type of connection	Plug-in connection
--------------------	--------------------

Supply connection

Type of connection	Plug-in connection	Clamping range, min.	0.13 mm ²
Clamping range, max.	1.5 mm ²	Stripping length	11 mm

Important note

IPC conformity Conformity: The products are developed, manufactured and delivered according international recognized standards and norms and comply with the assured properties in the data sheet resp.

Technical data

fulfill decorative properties in accordance with IPC-A-610 "Class 2". Further claims on the products can be evaluated on request.

Classifications

ETIM 8.0	EC002780	ETIM 9.0	EC002780
ETIM 10.0	EC002780	ECLASS 14.0	27-14-11-52
ECLASS 15.0	27-14-11-52		

Drawings

