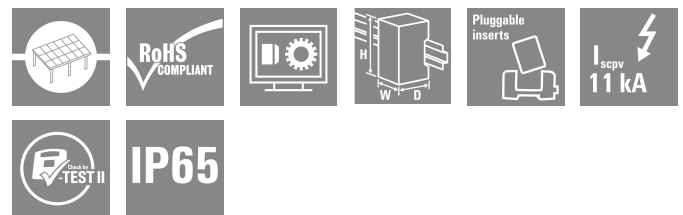
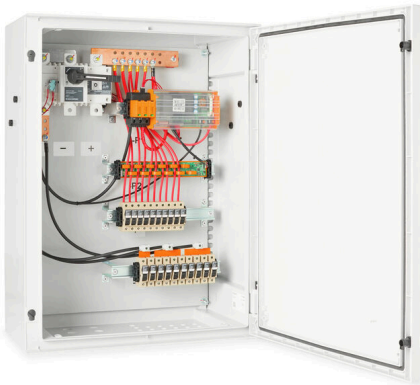


PV 210S0F3CXXV100TA1PA10PWW

Weidmüller Interface GmbH & Co. KG
 Klingenbergstraße 26
 D-32758 Detmold
 Germany

www.weidmueller.com



PV Next combiner boxes for inverters with 1 to 12 MPP trackers are used to protect the DC side of a photovoltaic system. The combiner boxes protect the inverter against overvoltages and thus comply with the European Directive CLC/TS 5 1643-32. In addition, these products offer the possibility to protect the system against reverse currents and the possibility to combine strings to save cables during installation.

General ordering data

Version	Photovoltaics, Combiner Box, 1000 V, 1 MPP, 10 Inputs / 1 Output per MPP, With fuse holder, Surge protection I / II, Switch disconnecter, Current monitoring, Cable gland, Designed for Fronius Tauro Eco Inverters
Order No.	8000111136
Type	PV 210S0F3CXXV100TA1PA10PWW
GTIN (EAN)	4099986933927
Qty.	1 items

PV 210S0F3CXXV100TA1PA10PWW

Weidmüller Interface GmbH & Co. KG
 Klingenbergstraße 26
 D-32758 Detmold
 Germany

www.weidmueller.com

Technical data

Approvals

ROHS	Conform
------	---------

Dimensions and weights

Depth	300 mm	Depth (inches)	11.811 inch
Depth with add-on components	300 mm	Height	847 mm
Height (inches)	33.3464 inch	Width	636 mm
Width (inches)	25.0393 inch	Net weight	29000 g

Temperatures

Ambient temperature	-20 °C...45 °C
---------------------	----------------

Environmental Product Compliance

RoHS Compliance Status	Compliant with exemption
RoHS Exemption (if applicable/known)	6c, 7a, 7cl
REACH SVHC	Lead 7439-92-1
SCIP	1d28ada4-1634-4382-8635-45f6353a6574

Included in delivery

Included accessories	Article	Mounting foot
	Quantity	4

Electrical characteristics

Rated DC voltage	1000 V	
Rated short-term current resistance	Rated current	162.5 A
Current per Maximum Power Point, max.	135 A	
Rated DC current per connection	Current per string, max.	30.00 A

Enclosure

Insulating material	Polyester glass-fibre reinforced, Polycarbonate	Type of mounting	Fixing lugs
Impact resistance	IK10 in accordance with IEC 62262	Enclosure attachment	Fixing lugs
Protection class	II	Connection type string	Internal terminal (with cable gland feed-through)

General data

Standards	EN 61643-31	Protection degree	IP65
Installation location	Protected outdoor area (>1 km from sea)		

Inputs

Cartridge fuse	10 x 38 mm		
Fused poles of string	+/-		
Fuse-link standard	gPV (EN 60269-6)		
Amount of maximum power points (MPP)	1		
Functional earth connector	Cable entry	Number of cable entries	1

PV 210S0F3CXXV100TA1PA10PWW

Weidmüller Interface GmbH & Co. KG
 Klingenbergstraße 26
 D-32758 Detmold
 Germany

www.weidmueller.com

Technical data

	Wire connection	Type of connection	Screw terminal connectors
		Flexible, max. H05(07) V-K	25 mm ²
		w. wire end ferrule, DIN 46228 pt 1, max.	16 mm ²
Number of conduit inlets	10		
DC Input + & -	Wire connection	Type of connection	Screw terminal connectors
		Wire cross-section, min.	1 mm ²
		Wire cross-section, max.	16 mm ²
	Cable entry	Number of cable entries	10
Fuse type	Empty fuse holder		
Fuses	Yes		
Max. number of DC inputs	per Maximum Power Point 10 inputs connected in parallel		
Number of string inputs per MPP	≥ 7...≤ 10		
Surge protection auxiliary contact	Cable entry	Number of cable entries	1
	Wire connection	Type of connection	PUSH IN with actuator
		Flexible, max. H05(07) V-K	2.5 mm ²
		w. wire end ferrule, DIN 46228 pt 1, max.	2.5 mm ²
Number of inputs	10		

Outputs

Max. number of DC outputs	per Maximum Power Point 1 output		
DC Output + & -	Wire connection	Type of connection	Screw connection

Surge protection DC side

Standards	EN 61643-31	Lightning test current Iimp (10/350 μs)	6.25 kA
Discharge current, max. (8/20 μs)	40 kA	Short-circuit current ISCPV	162.5 A
Total discharge current I _{total} (8/20 μs)	50 kA	Discharge current I _n (8/20 μs)	20 kA
Requirements class	Type I/II	Total discharge current I _{total} (10/350 μs)	12.5 kA
PV system voltage, max. U _{cpv}	1000 V	Surge protection DC side	1000 V type I + II
Maximum continuous operating voltage DC UCPV mode +/-, -/PE, +/PE	1000 V		

DC load break switch

Voltage type	DC	Rated impulse withstand voltage	12 kV
Switch disconnector execution	switch inside enclosure	Motor drive available	No
Number of breaking operation cycles at rated current	200	Number of operating cycles	10000

Important note

Product information	The SCIP number was assigned due to a lead content of more than 0.1 % of the net weight. Safe use instruction according to ECHA: The identification of the hazardous substance is sufficient to allow safe use of the article throughout its life cycle, including the service life, disassembly and waste/recycling phase Fuses are not included
---------------------	------------------------------------------------------------------------------------------------------------------------------------------------------------------------------------------------------------------------------------------------------------------------------------------------------------------------------------------------------

PV 210S0F3CXXV100TA1PA10PWW

Weidmüller Interface GmbH & Co. KG

Klingenbergstraße 26

D-32758 Detmold

Germany

www.weidmueller.com

Technical data

Classifications

ETIM 8.0	EC003857	ETIM 9.0	EC003857
ETIM 10.0	EC003857	ECLASS 14.0	22-57-02-92
ECLASS 15.0	22-57-02-92		

Tender specification sheets

Long specification	<p>Combiner box for inverters with 1 MPP tracker, suitable for protecting the DC side of a photovoltaic system according to DIN CLC/TS 51643-32. MPP 1: 10 inputs, connection via M25 cable gland with multiple sealing inserts. PUSH IN connection / single-wire, multi-wire, with/without ferrule. 1 output, connection via M25 cable gland with multiple sealing inserts. PUSH IN connection / single-wire, multi-wire, with/without ferrule. Max. string voltage Uoc: 1000 VDC</p> <p>1 class/type I + II combined arrester with signal contact</p> <p>Fuse holders for inputs and outputs (fuses 10x38 to be ordered separately)</p> <p>With lockable DC load break switch for safe separation of the string lines according to DIN EN IEC 60947-3</p> <p>Connection of the signal contact via M16 cable glands (Clamping range 5-10 mmØ) max. conductor cross-section: 1.5 mm²</p> <p>Connection of the functional earth via M16 cable glands (Clamping range 5-10 mmØ) Conductor cross-section: ≥ 16 mm²</p> <p>Protection class: IP65</p> <p>All built into a glass fibre reinforced polyester housing. Dimensions HxWxD: 847x636x300 mm</p> <p>Approval according to low voltage switchgear and controlgear IEC 61439-1 and EN 61439-2</p>
--------------------	---------------------------------------------------------------------------------------------------------------------------------------------------------------------------------------------------------------------------------------------------------------------------------------------------------------------------------------------------------------------------------------------------------------------------------------------------------------------------------------------------------------------------------------------------------------------------------------------------------------------------------------------------------------------------------------------------------------------------------------------------------------------------------------------------------------------------------------------------------------------------------------------------------------------------------------------------------------------------------------------------------------------------------------------------------------------------------------------------------------------------------------------------------------------------------------------------------------------------------------------------------------------------

