

**PVC DC 2I 10 2MPP RD SPD1R EVO 11**

**Weidmüller Interface GmbH & Co. KG**  
 Klingenbergstraße 26  
 D-32758 Detmold  
 Germany

www.weidmueller.com



For safe remote shutdown Rooftop photovoltaic systems can require a disconnection device at the point where the cables enter into the building, that is connected to the power grid in the building. This allows the fire brigade to carry out their work in an emergency without being unnecessarily endangered. When the power supply is restored, the PV Next Fireman Switch automatically reconnects the PV strings.

**General ordering data**

Version	Photovoltaics, Combiner Box, Fireman's switch, PV Next, 1100 V, 2 MPP's, 2 Inputs / 1 Output per MPP, Surge protection I / II, Remote disconnecter, MC4-Evo 2
Order No.	<a href="#">8000098970</a>
Type	PVC DC 2I 10 2MPP RD SPD1R EVO 11
GTIN (EAN)	4099986665293
Qty.	1 items

## PVC DC 2I 10 2MPP RD SPD1R EVO 11

Weidmüller Interface GmbH & Co. KG  
Klingenbergstraße 26  
D-32758 Detmold  
Germany

www.weidmueller.com

## Technical data

## Approvals

Approvals



ROHS Conform

## Dimensions and weights

Depth	132 mm	Depth (inches)	5.1968 inch
Height	236 mm	Height (inches)	9.2913 inch
Width	300 mm	Width (inches)	11.811 inch
Net weight	3942 g		

## Temperatures

Ambient temperature -20 °C...50 °C Humidity 5...95 %, no condensation

## Environmental Product Compliance

RoHS Compliance Status	Compliant with exemption
RoHS Exemption (if applicable/known)	7a, 7cl
REACH SVHC	Lead 7439-92-1
SCIP	bdab5698-6a20-4370-8e28-8810d882d01a

## Included in delivery

Included accessories	Article	Mounting foot
	Quantity	4
	Article	Sealing plug
	Quantity	2

## Approvals and norms

Approvals EN 61439-2, IEC 61439-2, OVE-Directive R 11-1:2022-05-01

## Guarantee

Time interval 5 years

## Electrical characteristics

Rated DC voltage	1100 V
Rated short-term current resistance	Rated current 55 A
Current per Maximum Power Point, max.	44 A
Rated DC current per connection	Current per string, max. 44.00 A

## Enclosure

Insulating material	Polyester glass-fibre reinforced, Polycarbonate	Type of mounting	Fixing lugs
Impact resistance	IK08 in accordance with IEC 62208, IK10 in accordance with IEC 62262	Enclosure attachment	Via mounting feet

**PVC DC 2I 10 2MPP RD SPD1R EVO 11**

**Weidmüller Interface GmbH & Co. KG**  
 Klingenbergstraße 26  
 D-32758 Detmold  
 Germany

www.weidmueller.com

**Technical data**

Protection class	II	Connection type string	Plug MC4-Evo 2
------------------	----	------------------------	----------------

**General data**

Standards	EN 61643-31	Protection degree	IP65
Installation location	Protected outdoor area (>1 km from sea)		

**Inputs**

Amount of maximum power points (MPP)	2			
Functional earth connector	Cable entry	Number of cable entries	1	
	Wire connection	Type of connection	Tension clamp connection with actuator	
		Flexible, max. H05(07) V-K	25 mm <sup>2</sup>	
Number of conduit inlets	3			
DC Input + & -	Wire connection	Type of connection	Stäubli MC4-Evo 2 connector	
		Compatible cable cross-section	TÜV 2 Pfg1169/08.07	
		Wire cross-section, min.	2.5 mm <sup>2</sup>	
	Wire cross-section, max.	16 mm <sup>2</sup>		
	Cable entry	Number of cable entries	4	
Fuse type	Neither fuse cartridge nor holder			
Fuses	No			
Max. number of DC inputs	per Maximum Power Point 2 inputs connected in parallel			
Number of string inputs per MPP	≤ 2			
Surge protection auxiliary contact	Cable entry	Number of cable entries	1	
	Wire connection	Type of connection	Tension clamp connection with actuator	
		Flexible, max. H05(07) V-K	1.5 mm <sup>2</sup>	
		w. wire end ferrule, DIN 46228 pt 1, max.	1.5 mm <sup>2</sup>	
Number of inputs	4			

**Outputs**

Max. number of DC outputs	per Maximum Power Point 1 output		
DC Output + & -	Wire connection	Type of connection	Stäubli MC4-Evo 2 connector
		Compatible cable cross-section	TÜV 2 Pfg1169/08.07
		Wire cross-section, min.	2.5 mm <sup>2</sup>
		Wire cross-section, max.	16 mm <sup>2</sup>

**Remote disconnecter**

Automatic reclosing after voltage drop	Yes
Number of operating cycles	10000

**PVC DC 2I 10 2MPP RD SPD1R EVO 11**

**Weidmüller Interface GmbH & Co. KG**  
 Klingenbergstraße 26  
 D-32758 Detmold  
 Germany

www.weidmueller.com

**Technical data**

Control voltage	100 V AC - 250 V AC 50/60Hz		
Remote disconnecter auxiliary contact	Cable entry	Number of cable entries	1
	Wire connection	Type of connection	Screw terminal connectors
		Flexible, max. H05(07) V-K	1.5 mm <sup>2</sup>
		w. wire end ferrule, DIN 46228 pt 1, max.	1.5 mm <sup>2</sup>
Remote disconnecter control contact	Cable entry	Number of cable entries	1
	Wire connection	Type of connection	Screw terminal connectors
		Flexible, max. H05(07) V-K	1.5 mm <sup>2</sup>
		w. wire end ferrule, DIN 46228 pt 1, max.	1.5 mm <sup>2</sup>
Type of power circuit disconnection	Under voltage tripping		
Turn-off time	1.5 s		
Current consumption of switch	Type of switch	Fireman switch	
	Current consumption, note	The Peak current only arises for a short time when the capacitors of the fireman switch were previously completely discharged.	
	Current consumption peak	300 mA	
	Current consumption continuous	30 mA	
Number of breaking operation cycles at rated current	300		
Switch disconnecter execution	Remote disconnecter inside enclosure		
Switching disconnecter capacity	IEC 60947-3, DC-PV1		

**Surge protection DC side**

Standards	EN 61643-31	Lightning test current Iimp (10/350 μs)	5 kA
Protection level Up (+/-, -/PE, +/-PE)	≤ 3.8 kV	Standby power consumption PC	<0.2 W
Short-circuit current ISCP	11000 A	Total discharge current Itotal (8/20μs)	50 kA
Discharge current In (8/20 μs)	20 kA	Requirements class	Type I/II
Total discharge current Itotal (10/350μs)	10 kA	Protection level Up (-/PE)	≤ 3.8 kV
Protection level Up (+/-)	≤ 3.8 kV	Protection level Up (+/PE)	≤ 3.8 kV
PV system voltage, max. Ucpv	1100 V	Surge protection DC side	1000 V type I + II
Maximum continuous operating voltage DC UCPV mode +/-, -/PE, +/-PE	1100 V		

**Important note**

Product information      The SCIP number was assigned due to a lead content of more than 0.1 % of the net weight. Safe use instruction according to ECHA:  
 The identification of the hazardous substance is sufficient to allow safe use of the article throughout its life cycle, including the service life, disassembly and waste/recycling phase

**Classifications**

ETIM 8.0	EC003857	ETIM 9.0	EC003857
ETIM 10.0	EC003857	ECLASS 14.0	22-57-02-92
ECLASS 15.0	22-57-02-92		

**Tender specification sheets**

Long specification      Automatic ON and OFF switching fireman switch

**PVC DC 2I 10 2MPP RD SPD1R EVO 11**

**Weidmüller Interface GmbH & Co. KG**  
Klingenbergstraße 26  
D-32758 Detmold  
Germany

[www.weidmueller.com](http://www.weidmueller.com)

**Technical data**

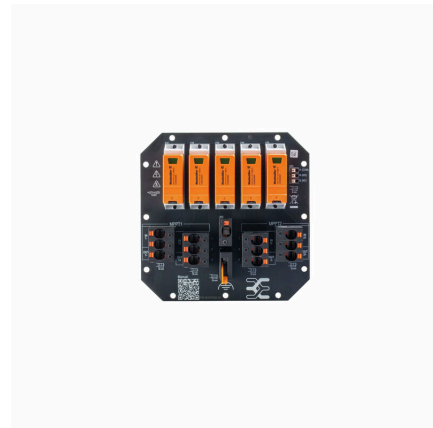
for the connection to 2 MPP tracker in the inverter. Suitable for remote disconnection of the DC side by the fire department.  
Max. string voltage Uoc: 1100V Integrated surge protection with 2 class I+II combined arresters with signal contact.  
Suitable for protection against overvoltages in a photovoltaic system according to EN 51643-32. MPP1: 2 inputs, connection via MC4-Evo 2 connector, compatible with cable type TÜV 2 Pfg1169/08.07 / EN 50618:2063  
1 output, connection via MC4-Evo 2 connector, compatible with cable type TÜV 2 Pfg1169/08.07 / EN 50618:2063  
MPP2: identical to MPP1  
DC fireman switch: Switching off by undervoltage tripping. Automatic reconnection after the control voltage (230 V AC) is applied again.  
With signal contact. Connection of the fireman switch control line 230 VAC via cable glands (8-12mmØ) max. conductor cross-section: 1.5mm<sup>2</sup>.  
Connection of the signal contact 24 VDC via cable glands (8-12mmØ) max. conductor cross-section: 1.5mm<sup>2</sup>.  
Protection class: IP65.  
All built into a glass fibre reinforced polyester housing.  
Dimensions HxWxD: 236x200x132mm.  
Approval according to low voltage switchgear IEC 61439-1:2011 and EN 61439-2:2011

**PVC DC 2I 10 2MPP RD SPD1R EVO 11**

**Weidmüller Interface GmbH & Co. KG**  
Klingenbergstraße 26  
D-32758 Detmold  
Germany

**Drawings**

[www.weidmueller.com](http://www.weidmueller.com)



## PVC DC 2I 10 2MPP RD SPD1R EVO 11

**Weidmüller Interface GmbH & Co. KG**  
 Klingenbergstraße 26  
 D-32758 Detmold  
 Germany

[www.weidmueller.com](http://www.weidmueller.com)

## Accessories

### PV Sun Covers



#### General ordering data

Type	PV SUNCOVER 30/20/13	Version	
Order No.	<a href="#">8000143249</a>	Photovoltaics, Sun cover	
GTIN (EAN)	4099987 111881		
Qty.	1 ST		

### Cutting tools



Cutting tools for conductors up to 8 mm, 12 mm, 14 mm and 22 mm outside diameter. The special blade geometry allows pinch-free cutting of copper and aluminium conductors with minimum physical effort. The cutting tools (KT 8 to KT 22) also come with VDE and GS-tested protective insulation up to 1,000 V in accordance with EN/IEC 60900.

#### General ordering data

Type	KT 14	Version	
Order No.	<a href="#">1157820000</a>	Cutting tools, Cutting tool for one-hand operation	
GTIN (EAN)	4032248945344		
Qty.	1 ST		

### Tools



- For flexible and solid conductors with special insulating materials
- High-quality stripping for industrial applications (complies with aircraft industry requirements)
- Specially shaped blades enable stripping of special types of insulation and conductor configurations
- Stripping length adjustable via end stop
- Very versatile thanks to interchangeable stripping units
- Stripping results reproduced accurately over and over again
- No damage to the conductor
- A long-lasting, reliable tool thanks to its sturdy design
- Integrated cutting function

## PVC DC 2I 10 2MPP RD SPD1R EVO 11

**Weidmüller Interface GmbH & Co. KG**  
 Klingenbergstraße 26  
 D-32758 Detmold  
 Germany

www.weidmueller.com

## Accessories

### General ordering data

Type	MULTI-STRIPAX PV	Version	
Order No.	<a href="#">1190490000</a>	Photovoltaics, Plug-in connector	
GTIN (EAN)	4032248973262		
Qty.	1 ST		

### Crosshead screwdriver Phillips



VDE insulated crosshead screwdriver, for Phillips screws, SDIK PH DIN 7438, ISO 8764/2-PH, output to ISO 8764-PH, SoftFinish grip

### General ordering data

Type	SDIK PH3 X 150	Version	
Order No.	<a href="#">2749910000</a>	Screwdriver, Blade width (B): 3 mm, 150 mm, Blade thickness (A): 3	
GTIN (EAN)	4050118897210		
Qty.	1 ST		

### Slotted screwdriver



VDE insulated slot-head screwdriver, SDI DIN 7437, ISO 2380/2, drive output acc. to DIN 5264, ISO 2380/1. SoftFinish grip

### General ordering data

Type	SDIS 0.6X3.5X100	Version	
Order No.	<a href="#">2749810000</a>	Screwdriver, Blade width (B): 3.5 mm, Blade length: 100 mm, Blade thickness (A): 0.6 mm	
GTIN (EAN)	4050118897012		
Qty.	1 ST		
Type	SDIS 1.0X5.5X125	Version	
Order No.	<a href="#">2749850000</a>	Screwdriver, Blade width (B): 5.5 mm, Blade length: 125 mm, Blade thickness (A): 1 mm	
GTIN (EAN)	4050118897050		
Qty.	1 ST		

## PVC DC 2I 10 2MPP RD SPD1R EVO 11

**Weidmüller Interface GmbH & Co. KG**  
 Klingenbergstraße 26  
 D-32758 Detmold  
 Germany

[www.weidmueller.com](http://www.weidmueller.com)

## Accessories

### External fixing lugs



External attachment lugs 4-part set

#### General ordering data

Type	MF FPC	Version	
Order No.	<a href="#">9536040000</a>	FPC (polycarbonate empty enclosure), Mounting foot, Fixing lugs,	
GTIN (EAN)	4032248009442	Height: 40 mm, Width: 19 mm, Depth: 35.5 mm, Basic material:	
Qty.	1 ST	Polyamide, Polyamide 66, Light Grey	

### UV-resistant cable ties



UV-resistant polyamide 6.6 ensures long durability of our special cable ties even with strong UV radiation. Ideal for continuous outdoor use.

#### General ordering data

Type	CB-UVR 290/4,5 BK	Version	
Order No.	<a href="#">2659350000</a>	Cable ties, 4.5 x 290 mm, Polyamide 66, 220 N	
GTIN (EAN)	4050118682816		
Qty.	100 ST		

### Y-Connector Cables



The Y cable is used for the parallel connection of several strings in a PV system, e.g. for splitting a line in front of an inverter.  
 The cables are available in different connection variants.

#### General ordering data

Type	PVHYM-M-XXXX6W+11	Version	
Order No.	<a href="#">2877850000</a>	Photovoltaics, Y-Connector Cable, 1x WM4 C Female, 2x MC4 Male,	
GTIN (EAN)	4064675666417	6mm <sup>2</sup> , 1100 V	
Qty.	1 ST		

## PVC DC 2I 10 2MPP RD SPD1R EVO 11

**Weidmüller Interface GmbH & Co. KG**  
 Klingenbergstraße 26  
 D-32758 Detmold  
 Germany

www.weidmueller.com

## Accessories

Type	PVHYM+M+XXXX6W-11	Version	
Order No.	<a href="#">2877860000</a>	Photovoltaics, Y-Connector Cable, 1x WM4 C Male, 2x MC4 Female,	
GTIN (EAN)	4064675666424	6mm <sup>2</sup> , 1100 V	
Qty.	1 ST		

## Emergency stop button



### General ordering data

Type	AC SB E 5A 1POL PO 06KV	Version	
Order No.	<a href="#">3077660000</a>	Photovoltaics, Emergency stop button, 1 pole, 600 V AC, 5 A,	
GTIN (EAN)	4099987081887	Complete enclosure	
Qty.	1 ST		

## Sealing sets



### General ordering data

Type	BLINDPLUG SET5 7X28MM	Version	
Order No.	<a href="#">3077670000</a>	Photovoltaics, Blind plug	
GTIN (EAN)	4099987081894		
Qty.	1 ST		
Type	BLINDPLUG SET50 7X28MM	Version	
Order No.	<a href="#">3077650000</a>	Photovoltaics, Blind plug, Accessories, Blind plug, 50 pieces	
GTIN (EAN)	4099987081870		
Qty.	1 ST		

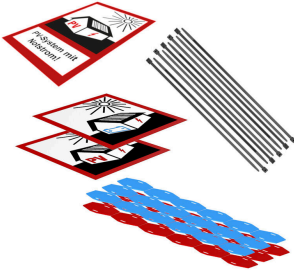
## PVC DC 2I 10 2MPP RD SPD1R EVO 11

**Weidmüller Interface GmbH & Co. KG**  
 Klingenbergstraße 26  
 D-32758 Detmold  
 Germany

www.weidmueller.com

## Accessories

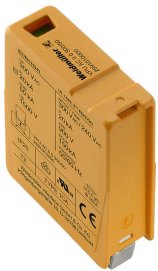
### PV marking sets



### General ordering data

Type	PV MARKER 1-3 MPP	Version	
Order No.	<a href="#">8000149520</a>	Photovoltaics, Device markers, Accessories, Conductor and cable	
GTIN (EAN)	4099987229197	markers, Cable ties, Marking set, Warning label, Cable marker, Self-	
Qty.	1 ST	adhesive	

### Spare Arrester



### General ordering data

Type	VPU PV I+II O 1000	Version	
Order No.	<a href="#">2530600000</a>	Surge voltage arrester, Low voltage, Accessories, Surge protection I /	
GTIN (EAN)	4050118540819	II, Spare arrester	
Qty.	9 ST		
Type	VPU PV I+II OM 1000	Version	
Order No.	<a href="#">2534300000</a>	Surge voltage arrester, Low voltage, Surge protection I / II, Spare	
GTIN (EAN)	4050118545906	arrester	
Qty.	9 ST		