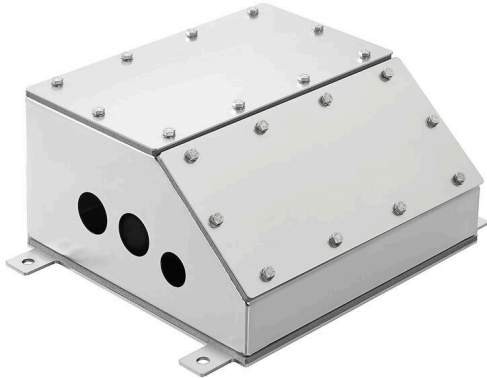


KTB FS 302915 S2N2 ANGLED BOX EDGE HV

Weidmüller Interface GmbH & Co. KG
Klingenbergstraße 26
D-32758 Detmold
Germany

www.weidmueller.com



We offer enclosure solutions for on-vehicle use. Our motor connection boxes for DC, three-phase and AC drives guarantee perfect functionality even with high current and high voltage. Their space-saving design allows flexible use of the installation space and due to the current load tolerance, heating is low, resulting in higher durability. In addition, our gangway connection boxes ensure the distribution of the supply voltage in train sets, providing robust and safe protection for the power supply of trains.

General ordering data

Version	Enclosures, Height: 303 mm, Width: 290 mm, Depth: 157.5 mm, Gland plates: Bottom, top, Basic material: Stainless steel 1.4301 (304), untreated, silver
Order No.	8000092462
Type	KTB FS 302915 S2N2 ANGLED BOX EDGE HV
GTIN (EAN)	4099986672307
Qty.	1 items

KTB FS 302915 S2N2 ANGLED BOX EDGE HV

Weidmüller Interface GmbH & Co. KG
 Klingenbergstraße 26
 D-32758 Detmold
 Germany

www.weidmueller.com

Technical data
Dimensions and weights

Depth	157.5 mm	Depth (inches)	6.2008 inch
Height	303 mm	Height (inches)	11.9291 inch
Width	290 mm	Width (inches)	11.4173 inch
Net weight	10800 g		

Temperatures

Operating temperature	-60 °C...135 °C
-----------------------	-----------------

Environmental Product Compliance

RoHS Compliance Status	Compliant without exemption
REACH SVHC	No SVHC above 0.1 wt%

General information

Material thickness of cover	1.5 mm	Material thickness of flange	3 mm
Material thickness of enclosure	1.5 mm	Operating temperature, max.	135 °C
Operating temperature, min.	-60 °C	UL 94 flammability rating	V-0
Lid attachment	M6 hex-head slotted screws SW10	Standards	EN 61373 1b, EN 45545 HL3, EN 15085 CL2
Surface finish	untreated	Impact resistance	10 J version standard
Protection degree	IP66, IP67	Basic material	Stainless steel 1.4301 (304)
Seal material	Silicone	Gland plates	Bottom, top
Flange plate	Yes		

horizontal assembly

HV 4000	1x4	Fuse holder available	No
---------	-----	-----------------------	----

vertical assembly

Fuse holder available	No
-----------------------	----

Material data

UL 94 flammability rating	V-0	Surface finish	untreated
Basic material	Stainless steel 1.4301 (304)		

General data

Colour	silver	Protection degree	IP66, IP67
Colour chart (similar)	RAL 7001		

Housing

Basic material	Stainless steel 1.4301 (304)		
Drill holes side A	none		
Drill holes side B	none		
Reference product	Cardinality	1	
	Reference		

KTB FS 302915 S2N2 ANGLED BOX EDGE HV

Weidmüller Interface GmbH & Co. KG
Klingenbergstraße 26
D-32758 Detmold
Germany

www.weidmueller.com

Technical data

Classifications

ETIM 8.0	EC000261	ETIM 9.0	EC000261
ETIM 10.0	EC000261	ECLASS 14.0	27-18-01-01
ECLASS 15.0	27-18-01-01		