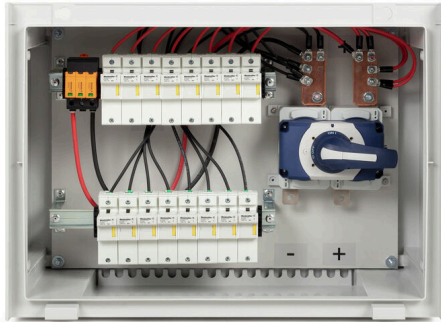


**PV 208S0F3CXXV000TXPX15LWW**

**Weidmüller Interface GmbH & Co. KG**  
 Klingenbergstraße 26  
 D-32758 Detmold  
 Germany

www.weidmueller.com



Standard portfolio for combiner boxes.  
 Protect and monitor strings in a solar park.  
 Weidmüller has developed a full portfolio of standard PV DC combiner boxes for solar parks. These products intend to cover the most common used solutions for such purposes in an efficient and competitive manner. From 6 up to 32 inputs our Generation X offers a full range of products for monitored and non-monitored combiner boxes allowing our customer to benefit from Weidmueller's experience and commitment to quality. Gen X

**General ordering data**

|            |   |
|------------|---|
| Version    | Photovoltaics, Assembled enclosure, Combiner Box, 1500 V, With fuse holder, Surge protection II, Cable gland, for wall mounting, Switch disconnect, Landscape, Central Inverter |
| Order No.  | <a href="#">8000081271</a>  |
| Type       | PV 208S0F3CXXV000TXPX15LWW  |
| GTIN (EAN) | 4064675596110   |
| Qty.       | 1 items   |

**PV 208S0F3CXXV000TXPX15LWW**

**Weidmüller Interface GmbH & Co. KG**  
 Klingenbergstraße 26  
 D-32758 Detmold  
 Germany

www.weidmueller.com

**Technical data**

**Approvals**

Approvals



ROHS Conform

**Dimensions and weights**

|            |            |                 |              |
|------------|------------|-----------------|--------------|
| Depth      | 300 mm     | Depth (inches)  | 11.811 inch  |
| Height     | 536 mm     | Height (inches) | 21.1023 inch |
| Width      | 747 mm     | Width (inches)  | 29.4094 inch |
| Net weight | 13218.88 g |                 |              |

**Temperatures**

|                     |                |                       |                |
|---------------------|----------------|-----------------------|----------------|
| Ambient temperature | -20 °C...45 °C | Operating temperature | -20°C to +40°C |
|---------------------|----------------|-----------------------|----------------|

**Environmental Product Compliance**

|                        |                       |
|------------------------|-----------------------|
| RoHS Compliance Status | Compliant             |
| REACH SVHC             | No SVHC above 0.1 wt% |

**DC electrical properties**

|               |                     |                          |                                       |
|---------------|---------------------|--------------------------|---------------------------------------|
| Rated voltage | 1500 V              | Switching capacity       | 400 A (DC21B 1500 V)                  |
| Earthing      | Directly at the VPU | Surge protection DC side | 1500 V type II without remote contact |

**DC inputs**

|                                 |  |                         |                         |
|---------------------------------|--|-------------------------|-------------------------|
| Cartridge fuse                  | 22 x 58 mm                               |                         |                         |
| Fuse protection                 | 30 A, 35 A, 40 A, 50 A, 60 A, 70 A, 75 A |                         |                         |
| Number of DC inputs             | 8  |                         |                         |
| Fused poles of string           | +/-                                      |                         |                         |
| Connection type, DC input cable | Cable gland                              |                         |                         |
| Connection DC input cable (-)   | Screw connection                         |                         |                         |
| Fuse-link standard              | gPV (EN 60269-6)                         |                         |                         |
| Functional earth connector      | Cable entry                              | Number of cable entries | 1                       |
|                                 |  | Cable diameter, min.    | 6 mm                    |
|                                 |  | Cable diameter, max.    | 12 mm                   |
|                                 | Wire connection                          | Type of connection      | M20 Cable gland         |
| Number of inputs                | 8  |                         |                         |
| Number of conduit inlets        | 19                                       |                         |                         |
| DC Input + & -                  | Wire connection                          | Type of connection      | M16 Cable gland         |
|                                 |  | Cable entry             | Number of cable entries |
|                                 |  |                         | Cable diameter, min.    |
|                                 |  | Cable diameter, max.    | 10 mm                   |
| Connection DC input cable (+)   | Screw connection                         |                         |                         |
| Fuse type                       | Empty fuse holder                        |                         |                         |
| Position of the fuses           | positive and negative inputs             |                         |                         |
| Type of fuse                    | Empty fuse holder                        |                         |                         |

**PV 208S0F3CXXV000TXPX15LWW**

**Weidmüller Interface GmbH & Co. KG**  
 Klingenbergstraße 26  
 D-32758 Detmold  
 Germany

www.weidmueller.com

**Technical data**

**DC outputs**

|   |                 |                             |                     |
|---|-----------------|-----------------------------|---------------------|
| DC output cable connection                  |                 | M12 bolt and nut connection |                     |
| DC Output + & -                             | Wire connection | Type of connection          | M40 Cable gland     |
|   |                 | Wire cross-section, min.    | 150 mm <sup>2</sup> |
|   |                 | Wire cross-section, max.    | 300 mm <sup>2</sup> |
| Number of DC outputs                        | 2               |                             |                     |
| Load circuit breaker with auxiliary contact | No              |                             |                     |

**DC string monitoring**

|                     |               |
|---------------------|---------------|
| Monitoring function | Non monitored |
|---------------------|---------------|

**Housing**

|                  |               |                   |      |
|------------------|---------------|-------------------|------|
| Type of mounting | Wall mounting | Protection degree | IP65 |
|------------------|---------------|-------------------|------|

**Norms and standards**

|           |                                     |
|-----------|-------------------------------------|
| Standards | EN 61439-2:2011, IEC 61439-2 ed 3.0 |
|-----------|-------------------------------------|

**Guarantee**

|               |         |
|---------------|---------|
| Time interval | 5 years |
|---------------|---------|

**Classifications**

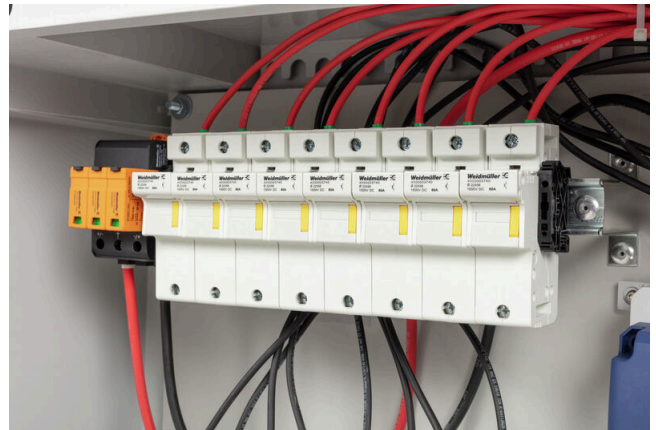
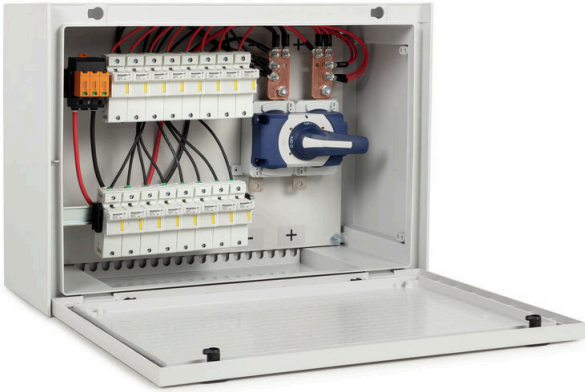
|             |             |             |             |
|-------------|-------------|-------------|-------------|
| ETIM 8.0    | EC003857    | ETIM 9.0    | EC003857    |
| ETIM 10.0   | EC003857    | ECLASS 14.0 | 22-57-02-92 |
| ECLASS 15.0 | 22-57-02-92 |             |             |

**PV 208S0F3CXXV000TXPX15LWW**

**Weidmüller Interface GmbH & Co. KG**  
Klingenbergstraße 26  
D-32758 Detmold  
Germany

**Drawings**

[www.weidmueller.com](http://www.weidmueller.com)



**PV 208S0F3CXXV000TXPX15LWW**

**Weidmüller Interface GmbH & Co. KG**  
 Klingenbergstraße 26  
 D-32758 Detmold  
 Germany

Drawings

www.weidmueller.com

Combiner Box Name Description

PV 2 24 S0 FX CXX VX OX TXPX 15 P F ES

**PV 1:** PV DC L0 Industrial  
**PV 2:** PV DC L1 Industrial  
**PV 3:** PV DC L2 Industrial

**Number of inputs (01-36)**

**S0:** Switch-disconnector

- S0 → Switch-disconnector (SW)
- S1 → Switch-disconnector with remote disconnection (SW RD)
- S2 → Molded Case Circuit Breaker (MCCB)
- S3 → Motorized switch-disconnector (SW M)
- S4 → Switch-disconnector with Contactor (SW K)
- SX → No Switch-disconnector needed (N/A)

**FX:** Fuses / Fuseholders position

- F0 → Fuses Both Poles
- F1 → Only Positive Fuses
- F2 → Only Negative Fuses
- F3 → Only Fuse Holders
- F4 → Only fuse holder in positive (+)
- F5 → Only fuse holder in negative (-)
- FX → No Fuse holders needed (N/A)

**CXX:** CIL Fuses Type → C 10/15/16/20/25/30/40/50/55/60/63/80 - (Example C10)

**NXX:** NH Fuses Type → N 40/50/63/80/100/125/160/200/250/315/355/400 - (Example N40)

CXX → N/A, NXX → N/A

**VX:** SPD Type

V0 → SPD Class II / V1 → SPD Class I+II / V2 → SPD Class I

VX → No SPD needed (N/A)

**Country / Whole World**

**Floating:** YES (F) / NO

**P:** Portrait

**L:** Landscape

**10:** 1000v

**15:** 1500v

**TX:** Monitoring Device

- TX → No monitoring (N/A)
- T2 → TC 16i+ (1kV or 1.5kV)
- T5 → TC 2x16i+
- T7 → TC 16iH
- T8 → Others
- T9 → Fronrich
- TA1 → Solar SMS (25A)
- TA2 → Solar SMS (50A)
- TA3 → Solar SMS LoRaWAN (25A)
- TA4 → Solar SMS LoRaWAN (50A)

**PX:** Power Supply for (TX)

- PX → No Power Supply Needed (N/A)
- P0 → Self-Powered (BKE)
- P1 → External Power Supply (PS ACDC)
- PA → Self-Powered (EE)

**OX:** Output type

- OX → No holes needed (N/A)
- O0 → Cable Gland
- O1 → WMAC
- O2 → MCA
- O3 → Multivia CG

