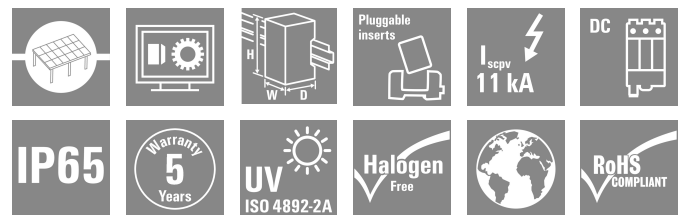
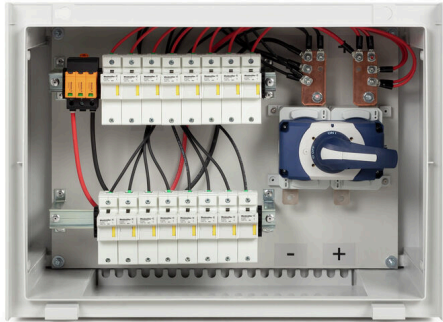


PV 206S0F3CXXV000TXPX15LWW

Weidmüller Interface GmbH & Co. KG
 Klingenbergstraße 26
 D-32758 Detmold
 Germany

www.weidmueller.com



Standard portfolio for combiner boxes.

Protect and monitor strings in a solar park.

Weidmüller has developed a full portfolio of standard PV DC combiner boxes for solar parks. These products intend to cover the most common used solutions for such purposes in an efficient and competitive manner. From 6 up to 32 inputs our Generation X offers a full range of products for monitored and non-monitored combiner boxes allowing our customer to benefit from Weidmüller's experience and commitment to quality. Gen X

General ordering data

Version	Photovoltaics, Assembled enclosure, Combiner Box, 1500 V, With fuse holder, Surge protection II, Cable gland, for wall mounting, Switch disconnect, Landscape, Central Inverter
Order No.	8000081269
Type	PV 206S0F3CXXV000TXPX15LWW
GTIN (EAN)	4064675592884
Qty.	1 items

PV 206S0F3CXXV000TXPX15LWW

Weidmüller Interface GmbH & Co. KG
 Klingenbergstraße 26
 D-32758 Detmold
 Germany

www.weidmueller.com

Technical data

Approvals

Approvals



ROHS Conform

Dimensions and weights

Depth	300 mm	Depth (inches)	11.811 inch
Height	536 mm	Height (inches)	21.1023 inch
Width	747 mm	Width (inches)	29.4094 inch
Net weight	25000 g		

Temperatures

Ambient temperature	-20 °C...40 °C	Operating temperature	-20°C to +40°C
---------------------	----------------	-----------------------	----------------

Environmental Product Compliance

RoHS Compliance Status	Compliant
REACH SVHC	No SVHC above 0.1 wt%

DC electrical properties

Rated voltage	1500 V	Switching capacity	400 A (DC21B 1500 V)
Earthing	Directly at the VPU	Surge protection DC side	1500 V type II without remote contact

DC inputs

Cartridge fuse	22 x 58 mm		
Fuse protection	30 A, 35 A, 40 A, 50 A, 60 A, 70 A, 75 A		
Number of DC inputs	6		
Fused poles of string	+/-		
Connection type, DC input cable	Cable gland		
Connection DC input cable (-)	Screw connection		
Fuse-link standard	gPV (EN 60269-6)		
Functional earth connector	Cable entry	Number of cable entries	1
		Cable diameter, min.	6 mm
		Cable diameter, max.	12 mm
	Wire connection	Type of connection	M20 Cable gland
Number of inputs	6		
Number of conduit inlets	15		
DC Input + & -	Wire connection	Type of connection	M16 Cable gland
		Cable entry	Number of cable entries
			Cable diameter, min.
		Cable diameter, max.	10 mm
Connection DC input cable (+)	Screw connection		
Fuse type	Empty fuse holder		
Position of the fuses	positive and negative inputs		
Type of fuse	Empty fuse holder		

PV 206S0F3CXXV000TXPX15LWW

Weidmüller Interface GmbH & Co. KG
 Klingenbergstraße 26
 D-32758 Detmold
 Germany

www.weidmueller.com

Technical data

DC outputs

DC output cable connection		M12 bolt and nut connection	
DC Output + & -	Wire connection	Type of connection	M40 Cable gland
		Wire cross-section, min.	150 mm ²
		Wire cross-section, max.	300 mm ²
Number of DC outputs	2		
Load circuit breaker with auxiliary contact	No		

DC string monitoring

Monitoring function	Non monitored
---------------------	---------------

Housing

Type of mounting	Wall mounting	Protection degree	IP65
------------------	---------------	-------------------	------

Norms and standards

Standards	EN 61439-2:2011, IEC 61439-2 ed 3.0
-----------	-------------------------------------

Guarantee

Time interval	5 years
---------------	---------

Classifications

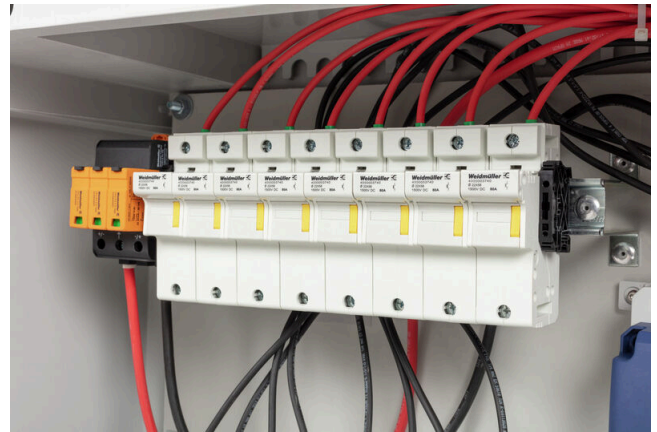
ETIM 8.0	EC003857	ETIM 9.0	EC003857
ETIM 10.0	EC003857	ECLASS 14.0	22-57-02-92
ECLASS 15.0	22-57-02-92		

PV 206S0F3CXXV000TXPX15LWW

Weidmüller Interface GmbH & Co. KG
Klingenbergstraße 26
D-32758 Detmold
Germany

Drawings

www.weidmueller.com



PV 206S0F3CXXV000TXPX15LWW

Weidmüller Interface GmbH & Co. KG
 Klingenbergstraße 26
 D-32758 Detmold
 Germany

Drawings

www.weidmueller.com

Combiner Box Name Description

PV 2 24 S0 FX CXX VX OX TXPX 15 P F ES

- PV 1:** PV DC L0 Industrial
- PV 2:** PV DC L1 Industrial
- PV 3:** PV DC L2 Industrial
- Number of inputs (01-36)**
- S0:** Switch-disconnector
 S0 → Switch-disconnector (SW)
 S1 → Switch-disconnector with remote disconnection (SW RD)
 S2 → Molded Case Circuit Breaker (MCCB)
 S3 → Motorized switch-disconnector (SW M)
 S4 → Switch-disconnector with Contactor (SW K)
 SX → No Switch-disconnector needed (N/A)
- FX:** Fuses / Fuseholders position
 F0 → Fuses Both Poles
 F1 → Only Positive Fuses
 F2 → Only Negative Fuses
 F3 → Only Fuse Holders
 F4 → Only fuse holder in positive (+)
 F5 → Only fuse holder in negative (-)
 FX → No Fuse holders needed (N/A)
- CXX:** CIL Fuses Type → C 10/15/16/20/25/30/40/50/55/60/63/80 - (Example C10)
- NXX:** NH Fuses Type → N 40/50/63/80/100/125/160/200/250/315/355/400 - (Example N40)
- CXX → N/A, NXX → N/A
- VX:** SPD Type
 V0 → SPD Class II / V1 → SPD Class I+II / V2 → SPD Class I
 VX → No SPD needed (N/A)



- Country / Whole World**
- Floating:** YES (F) / NO
- P:** Portrait
- L:** Landscape
- 10:** 1000v
- 15:** 1500v
- TX:** Monitoring Device
 TX → No monitoring (N/A)
 T2 → TC 16i+ (1kV or 1.5kV)
 T5 → TC 2x16i+
 T7 → TC 16iH
 T8 → Others
 T9 → Fronrich
 TA1 → Solar SMS (25A)
 TA2 → Solar SMS (50A)
 TA3 → Solar SMS LoRaWAN (25A)
 TA4 → Solar SMS LoRaWAN (50A)
- PX:** Power Supply for (TX)
 PX → No Power Supply Needed (N/A)
 P0 → Self-Powered (BKE)
 P1 → External Power Supply (PS ACDC)
 PA → Self-Powered (EE)

- OX:** Output type
 OX → No holes needed (N/A)
 O0 → Cable Gland
 O1 → WMAC
 O2 → MCA
 O3 → Multivia CG

