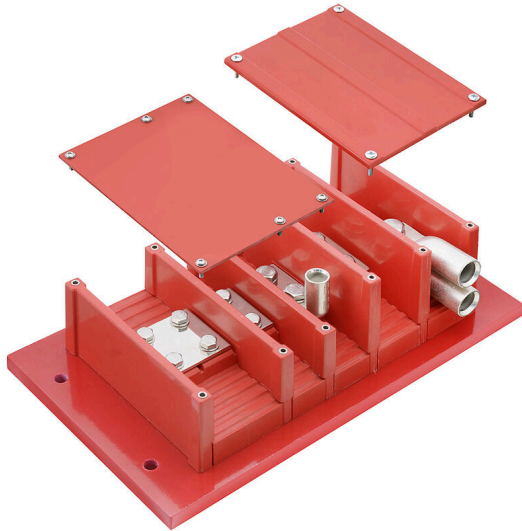


HV MUSTERLEISTE M8/M10/M12

Weidmüller Interface GmbH & Co. KG
Klingenbergstraße 26
D-32758 Detmold
Germany

www.weidmueller.com



Enclosed you will find the HV sample rail with the available terminal sizes, end and intermediate walls as well as standard and specific covers. Your High Voltage Terminal Block will be engineered and assembled according to your individual requirements. Terminal blocks in enclosures from the Klippon® Protect enclosure portfolio are also possible. Send us your requirements or contact us.

General ordering data

Version	Bolt-type screw terminals, Sample set
Order No.	8000073249
Type	HV MUSTERLEISTE M8/M10/M12
GTIN (EAN)	4064675882589
Qty.	1 items

HV MUSTERLEISTE M8/M10/M12

Weidmüller Interface GmbH & Co. KG
 Klingenbergstraße 26
 D-32758 Detmold
 Germany

www.weidmueller.com

Technical data

Dimensions and weights

Depth	126 mm	Depth (inches)	4.9606 inch
Height	220 mm	Height (inches)	8.6614 inch
Width	400 mm	Width (inches)	15.748 inch
Mounting dimension - height	120 mm	Mounting dimension - width	360 mm
Net weight	10004 g		

Temperatures

Continuous operating temp., min.	-50 °C	Continuous operating temp., max.	140 °C
----------------------------------	--------	----------------------------------	--------

Environmental Product Compliance

RoHS Compliance Status	Compliant without exemption
REACH SVHC	No SVHC above 0.1 wt%

Material data

Colour	red	UL 94 flammability rating	V-0
--------	-----	---------------------------	-----

System specifications

End cover plate required	Yes	Levels cross-connected internally	Yes
N-function	No	PE function	No
PEN function	No		

Additional technical data

Snap-on	No	Explosion-tested version	No
Type of mounting	Screw		

Conductors for clamping (rated connection)

Connection direction	on side, Bottom, top
----------------------	----------------------

General

Standards	EN 45545-2:2020, NFPA 130 ASTM E 162/ 662, BSS 7239/ 7242
-----------	---

Rating data

Rated voltage	4000 V	Standards	EN 45545-2:2020, NFPA 130 ASTM E 162/ 662, BSS 7239/ 7242
---------------	--------	-----------	---

Classifications

ETIM 8.0	EC000897	ETIM 9.0	EC000897
ETIM 10.0	EC000897	ECLASS 14.0	27-25-01-01
ECLASS 15.0	27-25-01-01		