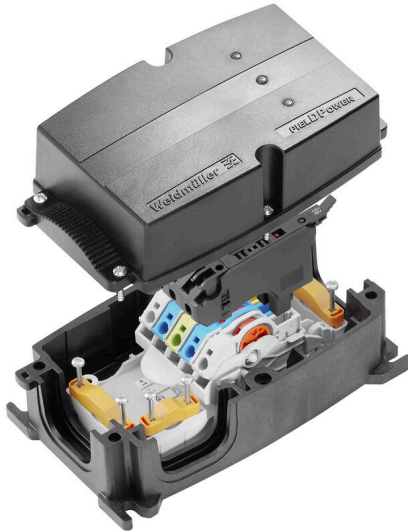


FP BOX FUSE DC

Weidmüller Interface GmbH & Co. KG
Klingenbergstraße 26
D-32758 Detmold
Germany

www.weidmueller.com



The FieldPower® power distributors support error-free installation in an extremely short space of time. Branches and functions integrated in the cover can simply be plugged in. Robust with high protection degree.

General ordering data

Version	FieldPower® power distribution box, DC, IP65, in complete state, glass-fibre reinforced polycarbonate, Insulation displacement connection (IDC), PUSH IN, Fuse
Order No.	8000007924
Type	FP BOX FUSE DC
GTIN (EAN)	4050118195439
Qty.	1 items

FP BOX FUSE DC

Weidmüller Interface GmbH & Co. KG
 Klingenbergstraße 26
 D-32758 Detmold
 Germany

www.weidmueller.com

Technical data

Approvals

Approvals



ROHS	Conform
UL File Number Search	UL Website
Certificate No. (UL)	E310075

Dimensions and weights

Depth	86 mm	Depth (inches)	3.3858 inch
Width	104 mm	Width (inches)	4.0945 inch
Net weight	679.76 g		

Temperatures

Storage temperature	-40 °C...85 °C	Operating temperature	-40 °C...55 °C
---------------------	----------------	-----------------------	----------------

Environmental Product Compliance

RoHS Compliance Status	Compliant with exemption
RoHS Exemption (if applicable/known)	7cl
REACH SVHC	Potassium perfluorobutane sulfonate 29420-49-3
SCIP	5f19cd84-8946-4797-9386-3ac323b95c10

Clamping capacity

Connection data - contact element Branch / Feed-in	Wire connection method	PUSH IN		
	Blade size of operating tool	0.6 x 3.5 mm		
	Stripping length	14.00 mm		
	Number of poles	5		
	Conductor connection cross-section, solid, max.	6 mm ²		
	Conductor connection cross-section, solid, min.	0.50 mm ²		
	Conductor connection cross-section, stranded, max.	6.00 mm ²		
	Conductor connection cross-section, stranded, min.	0.50 mm ²		
	Conductor connection cross-section, finely stranded, max.	10.00 mm ²		
	Conductor connection cross-section, finely stranded, min.	0.50 mm ²		
	Conductor connection cross-section, finest stranded, max.	6.00 mm ²		
	Conductor connection cross-section, finest stranded, min.	0.50 mm ²		
	Conductor connection cross-section with wire end ferrule	Type of wire end ferrule	12 mm with plastic collar	
		Standard	DIN 46228/4	
		Cross-section, min.	0.5 mm ²	
		Cross-section, max.	6 mm ²	
		Type of wire end ferrule	12 mm with plastic collar	
		Standard	DIN 46228/4	
		Cross-section, min.	0.5 mm ²	
	Cross-section, max.	6 mm ²		

Technical data

		Type of wire end ferrule	8 mm with plastic collar	
		Standard	DIN 46228/4	
		Cross-section, min.	0.5 mm ²	
		Cross-section, max.	6 mm ²	
		Type of wire end ferrule	8 mm with plastic collar	
		Standard	DIN 46228/4	
		Cross-section, min.	0.5 mm ²	
		Cross-section, max.	6 mm ²	
		Type of wire end ferrule	Twin wire-end ferrules	
		Cross-section, min.	0.5 mm ²	
		Cross-section, max.	6 mm ²	
Connection data - contact element power bus	Wire connection method	Insulation displacement connection (IDC)		
	Blade size of operating tool	0.6 x 3.5 mm		
	Number of poles	5		
	Conductor connection cross-section, solid, max.	6 mm ²		
	Conductor connection cross-section, solid, min.	1.50 mm ²		
	Conductor connection cross-section, stranded, max.	6.00 mm ²		
	Conductor connection cross-section, stranded, min.	2.50 mm ²		
	Conductor connection cross-section, finely stranded, max.	6.00 mm ²		
	Conductor connection cross-section, finely stranded, min.	2.50 mm ²		
	Connection data - plug-in connector	Wire connection method	PUSH IN	
Blade size of operating tool		3.0 x 0.5 mm		
Stripping length		12.00 mm		
Number of poles		5		
Conductor connection cross-section, solid, max.		4 mm ²		
Conductor connection cross-section, solid, min.		0.50 mm ²		
Conductor connection cross-section, stranded, max.		4.00 mm ²		
Conductor connection cross-section, stranded, min.		0.50 mm ²		
Conductor connection cross-section, finely stranded, max.		4.00 mm ²		
Conductor connection cross-section, finely stranded, min.		0.50 mm ²		
Conductor connection cross-section, finest stranded, max.		4.00 mm ²		
Conductor connection cross-section, finest stranded, min.		0.50 mm ²		
Conductor connection cross-section with wire end ferrule		Type of wire end ferrule	12 mm with plastic collar	
		Standard	DIN 46228/4	
		Cross-section, min.	0.5 mm ²	
		Cross-section, max.	4 mm ²	
		Type of wire end ferrule	12 mm with plastic collar	
		Standard	DIN 46228/4	
		Cross-section, min.	0.5 mm ²	
	Cross-section, max.	4 mm ²		
	Type of wire end ferrule	8 mm with plastic collar		
	Standard	DIN 46228/4		
	Cross-section, min.	0.5 mm ²		
	Cross-section, max.	4 mm ²		

FP BOX FUSE DC

Weidmüller Interface GmbH & Co. KG
 Klingenbergstraße 26
 D-32758 Detmold
 Germany

www.weidmueller.com

Technical data

Type of wire end ferrule	8 mm with plastic collar ferrule
Standard	DIN 46228/4
Cross-section, min.	0.5 mm ²
Cross-section, max.	4 mm ²
Type of wire end ferrule	Twin wire-end ferrules
Cross-section, min.	0.5 mm ²
Cross-section, max.	4 mm ²

General data

Basic material	Polycarbonate, GRP	Insulating material	Polycarbonate
Enclosure material	glass-fibre reinforced polycarbonate	Silicone	No
Colour	black	Protection degree	IP65, in complete state
UL 94 flammability rating	5VA	Torque for lid screws	2 Nm
Lid attachment	TX20 screws	Type of mounting	Screw mounting, Fixing lugs
Installation advice	Lid screws included	Function	Fuse
Can be coded	Yes, Coded on PE	Voltage type	DC
Number of poles	5	Number of connections / pole	1
Wire connection method	Insulation displacement connection (IDC), PUSH IN	Cartridge fuse	6.3 x 32 mm (1/4 x 1 1/4")
Conductor outlet direction	90°	Failure indicator	Red LED
Fuse holder (cartridge holder)	Pivoting		

Rated data acc. to IEC

Rated data acc. to IEC for contact element	Voltage type	DC
	Standard	IEC 60947-7-1, IEC 60947-7-2
	Rated voltage	800 V
	Rated impulse withstand voltage	8.00 kV
	Rated current (3 loaded poles)	41 A
Rated data acc. to IEC for fuse plug	Rated current (4 loaded poles)	25 A
	Voltage type	DC
	Standard	IEC 61984, IEC 60947-7-3
	Rated voltage	36 V
	Rated impulse withstand voltage	6.00 kV
	Rated current	12 A

Rated data acc. to UL

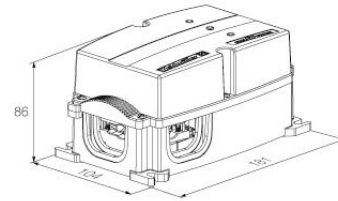
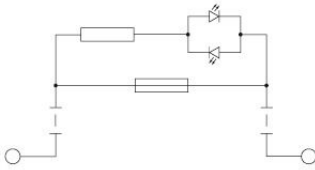
Standards	not UL approved	
Rated data acc. to UL for contact element	Standard	UL 1059
	Note	for use with UL-listed TC-ER cables
	Conductor connection cross-section, AWG, max.	AWG 10
	Conductor connection cross-section, AWG, min.	AWG 14
	Rated voltage	600 V
	Rated current	30 A
Rated data acc. to UL for fuse plug		

Classifications

ETIM 8.0	EC000214	ETIM 9.0	EC000214
ETIM 10.0	EC000214	ECLASS 14.0	27-14-24-09
ECLASS 15.0	27-14-24-09		

Drawings

Drilling template



Drilling template

