

## KLIPPON K41 M20WCSS EX

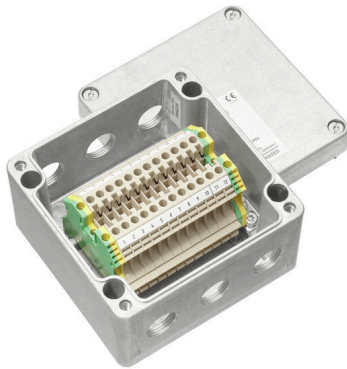
**Weidmüller Interface GmbH & Co. KG**

Klingenbergstraße 26

D-32758 Detmold

Germany

[www.weidmueller.com](http://www.weidmueller.com)



Various types of terminal boxes are available for installing signal / power supplies or distributors in explosive risk zones. The terminal boxes are explosion-protected equipment approved for use in Ex

areas in zones 0, 1, 2 and 20, 21, 22. They are certified in accordance with the latest international standards Ex e, Ex ia and Ex tb. Customer-specific configuration means these terminal boxes are the optimum solution for all applications. Use the product overview to find the right solution for you! Combine the enclosure, with or without threaded holes, a suitable mounting rail or pre-fitted strip terminals. We have put together a small selection for you, but we are happy to configure a bespoke solution for you.

Features:

- Available in a wide range of versions to meet customer requirements
- Additional international approvals alongside IECEx and ATEX also available
- Increased quality thanks to the use of established basic products in the Klippon® brand

### General ordering data

Version	Terminal Box, ATEX II 2GD T85°C Ex e II T6, KLIPPON K41 EX, KL SET 12W4 SDrill holes side A: 3 x M20x1.5, Drill holes side B: 3 x M20x1.5
Order No.	<a href="#">8000003591</a>
Type	KLIPPON K41 M20WCSS EX
GTIN (EAN)	4032248986736
Qty.	1 items

## KLIPPON K41 M20WCSS EX

**Weidmüller Interface GmbH & Co. KG**  
 Klingenbergstraße 26  
 D-32758 Detmold  
 Germany

www.weidmueller.com

## Technical data

### Approvals

ROHS	Conform
------	---------

### Dimensions and weights

Depth	81 mm	Depth (inches)	3.189 inch
Height	120 mm	Height (inches)	4.7244 inch
Width	122 mm	Width (inches)	4.8031 inch
Net weight	1235 g		

### Environmental Product Compliance

RoHS Compliance Status	Compliant without exemption
REACH SVHC	No SVHC above 0.1 wt%

### Certificate numbers enclosure

Certificate no. Terminal Box (ATEX)	IBExU12ATEX1145 X	Certificate no. Terminal Box (IECEX)	IECEX IBE 13.0002X
-------------------------------------	-------------------	--------------------------------------	--------------------

### Material data

Surface finish	untreated	Basic material	Aluminium AlSi12
----------------	-----------	----------------	------------------

### General data

Protection degree	IP66, IP67
-------------------	------------

### Housing

Basic material	Aluminium AlSi12	Drill holes side A	3 x M20x1.5
Drill holes side B	3 x M20x1.5		

### Standard features

Version	ATEX II 2GD T85°C Ex e II T6	Reference product	<a href="#">KLIPPON K41 EX</a>
---------	------------------------------	-------------------	--------------------------------

### Classifications

ETIM 8.0	EC002503	ETIM 9.0	EC002503
ETIM 10.0	EC002503	ECLASS 14.0	27-18-05-02
ECLASS 15.0	27-18-05-02		

**KLIPPON K41 M20WCSS EX**

**Weidmüller Interface GmbH & Co. KG**  
Klingenbergstraße 26  
D-32758 Detmold  
Germany

**Drawings**

[www.weidmueller.com](http://www.weidmueller.com)

