

KLIPPON K41 M25WCSS EX

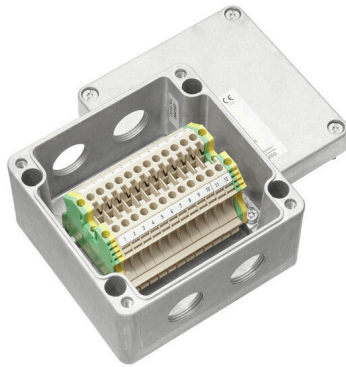
Weidmüller Interface GmbH & Co. KG

Klingenbergstraße 26

D-32758 Detmold

Germany

www.weidmueller.com



Various types of terminal boxes are available for installing signal / power supplies or distributors in explosive risk zones. The terminal boxes are explosion-protected equipment approved for use in Ex

areas in zones 0, 1, 2 and 20, 21, 22. They are certified in accordance with the latest international standards Ex e, Ex ia and Ex tb. Customer-specific configuration means these terminal boxes are the optimum solution for all applications. Use the product overview to find the right solution for you! Combine the enclosure, with or without threaded holes, a suitable mounting rail or pre-fitted strip terminals. We have put together a small selection for you, but we are happy to configure a bespoke solution for you.

Features:

- Available in a wide range of versions to meet customer requirements
- Additional international approvals alongside IECEx and ATEX also available
- Increased quality thanks to the use of established basic products in the Klippon® brand

General ordering data

Version	Terminal Box, ATEX II 2GD T85°C Ex e II T6, KLIPPON K41 EX, KL SET 12W4 SDrill holes side A: 2 x M25x1.5, Drill holes side B: 2 x M25x1.5
Order No.	8000003589
Type	KLIPPON K41 M25WCSS EX
GTIN (EAN)	4032248986613
Qty.	1 items

KLIPPON K41 M25WCSS EX

Weidmüller Interface GmbH & Co. KG
 Klingenbergstraße 26
 D-32758 Detmold
 Germany

www.weidmueller.com

Technical data

Approvals

ROHS	Conform
------	---------

Dimensions and weights

Depth	81 mm	Depth (inches)	3.189 inch
Height	120 mm	Height (inches)	4.7244 inch
Width	122 mm	Width (inches)	4.8031 inch
Net weight	1220 g		

Environmental Product Compliance

RoHS Compliance Status	Compliant without exemption
REACH SVHC	No SVHC above 0.1 wt%

Certificate numbers enclosure

Certificate no. Terminal Box (ATEX)	IBExU12ATEX1145 X	Certificate no. Terminal Box (IECEX)	IECEX IBE 13.0002X
-------------------------------------	-------------------	--------------------------------------	--------------------

Material data

Surface finish	untreated	Basic material	Aluminium AlSi12
----------------	-----------	----------------	------------------

General data

Protection degree	IP66, IP67
-------------------	------------

Housing

Basic material	Aluminium AlSi12	Drill holes side A	2 x M25x1.5
Drill holes side B	2 x M25x1.5		

Standard features

Version	ATEX II 2GD T85°C Ex e II T6	Reference product	KLIPPON K41 EX
---------	------------------------------	-------------------	--------------------------------

Classifications

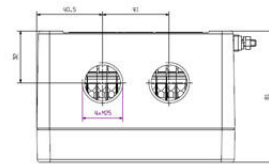
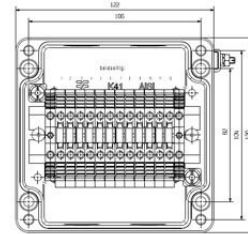
ETIM 8.0	EC002503	ETIM 9.0	EC002503
ETIM 10.0	EC002503	ECLASS 14.0	27-18-05-02
ECLASS 15.0	27-18-05-02		

KLIPPON K41 M25WCSS EX

Weidmüller Interface GmbH & Co. KG
Klingenbergstraße 26
D-32758 Detmold
Germany

Drawings

www.weidmueller.com



KLIPPON K41 M25WCSS EX

Weidmüller Interface GmbH & Co. KG
 Klingenbergstraße 26
 D-32758 Detmold
 Germany

www.weidmueller.com

Accessories

KSG BN O NI - nickel-plated version with neoprene seal



The KSG is only intended for use when connecting non-armoured cables and lines. When the cable gland is ordered together with a neoprene seal, the seal allows temperatures from -35°C to +90°C. When using a silicone seal, a temperature range of -60°C to +180°C is possible. The O-ring and the cable gland included in the delivery are made from the same material. IP66 or IP68 protection at a depth of 25 metres under water (a pressure of 2.5 bar) is guaranteed when using this sealing material. The KSG is permitted for use with pressure-resistant Ex d encapsulations and increased safety Ex e.

General ordering data

Type	KSG M25 BN O NI 2 G25	Version	
Order No.	1911570000	KSG (Klippon standard Ex cable gland), Cable glands, straight, M 25,	
GTIN (EAN)	4032248539710	16 mm, OD min. 13.5 - OD max. 20 mm, ID min. 13.50 - ID max.	
Qty.	20 ST	20.00 mm, IP66, IP68 - 2.5 bar, Brass, nickel-plated	

Plastic blanking plugs Ex e/i 7 Joule



In addition to cable glands for a wide range of applications, the product portfolio is rounded off by plugs, pressure compensation elements, adaptors and the corresponding accessories such as locknuts, sealing rings, flat washers and earthing rings.

General ordering data

Type	VP M25 EX SI 7J	Version	
Order No.	2066740000	VPK EX 7J (Ex blanking plug, plastic, 7J), Blanking plug, in closed	
GTIN (EAN)	4050118415360	state, M 25, 10 mm, IP54, IP66, IP67, IP68 - 5 bar (30 min.),	
Qty.	50 ST	Polyamide 6	

External thread M25



ADAP series adaptors provide flexibility and versatility infilling unused entries in Ex equipment while maintaining Flameproof Ex d and Increased Safety Ex e explosion protection and IP66/67/68 ingress rate.

KLIPPON K41 M25WCSS EX

Weidmüller Interface GmbH & Co. KG
Klingenbergstraße 26
D-32758 Detmold
Germany

www.weidmueller.com

Accessories

General ordering data

Type	ADAP EX M25-M16	Version	
Order No.	1737550000	ADAP (adaptor, extensions and reductions), Adapter, M 25 ,M 16,	
GTIN (EAN)	4008190957582	IP54, Brass, nickel-plated	
Qty.	1 ST		
Type	ADAP EX M25-M20	Version	
Order No.	1737710000	ADAP (adaptor, extensions and reductions), Adapter, M 25 ,M 20,	
GTIN (EAN)	4008190957735	IP54, Brass, nickel-plated	
Qty.	1 ST		