

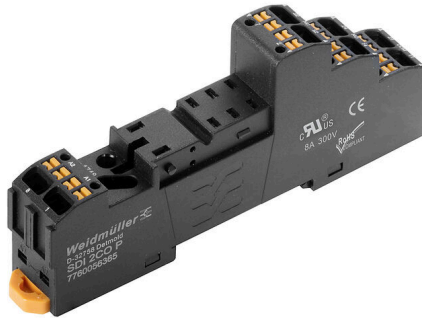
SDI 2CO P**Weidmüller Interface GmbH & Co. KG**

Klingenbergstraße 26

D-32758 Detmold

Germany

www.weidmueller.com



Relay sockets for the D-SERIES DRI relays

- 1 and 2 CO contacts
- Screw and PUSH IN connection
- Standard and low heights

General ordering data

| | |
|------------|---|
| Version | D-SERIES DRI, Relay socket, Number of contacts: 2, CO contact, Continuous current: 8 A, PUSH IN |
| Order No. | 7760056365 |
| Type | SDI 2CO P |
| GTIN (EAN) | 6944 1697 72290 |
| Qty. | 20 items |

SDI 2CO P

Weidmüller Interface GmbH & Co. KG

Klingenbergstraße 26
D-32758 Detmold
Germany

www.weidmueller.com

Technical data

Approvals

Approvals



ROHS Conform

UL File Number Search [UL Website](#)

Certificate No. (cURus) E312083

Dimensions and weights

| | | | |
|------------|----------|-----------------|-------------|
| Depth | 42.7 mm | Depth (inches) | 1.6811 inch |
| Height | 102.1 mm | Height (inches) | 4.0197 inch |
| Width | 15.9 mm | Width (inches) | 0.626 inch |
| Net weight | 38.72 g | | |

Temperatures

| | | | |
|-----------------------|----------------|---------------------|---------------------------|
| Storage temperature | -40 °C...85 °C | Ambient temperature | -40 °C...55 °C |
| Operating temperature | | Humidity | 5...85 %, no condensation |

Environmental Product Compliance

RoHS Compliance Status Compliant without exemption

REACH SVHC No SVHC above 0.1 wt%

Rated data UL

Certificate No. (cURus) E312083

Load side

| | | | |
|----------------------------|----------|--------------------|--------------|
| Rated switching voltage | 300 V AC | Continuous current | 8 A |
| Max. switching voltage, AC | 300 V | Contact type | 2 CO contact |

General data

| | | | |
|------------------------------------|--------------------------|----------------|--|
| Mounting rail | TS 35 | | |
| Colour | black | | |
| UL94 flammability rating component | Component | Housing | |
| | UL94 flammability rating | V-2 | |
| | Component | Pusher | |
| | UL94 flammability rating | HB | |
| | Component | Mounting foot | |
| | UL94 flammability rating | HB | |
| | Component | Retaining clip | |
| | UL94 flammability rating | HB | |

Insulation coordination

| | | | |
|---|--------------------|--|--------------------|
| Rated voltage | 300 V | Pollution severity | 2 |
| Surge voltage category | III | Insulating material group | IIIb |
| Clearance and creepage distances for control side - load side | ≥ 3 mm | Dielectric strength for control side - load side | 5 kVeff / 1 min |
| Dielectric strength of neighbouring contacts | 2.5 kVeff / 1 Min. | Impulse withstand voltage | 4.8 kV (1.2/50 µs) |

SDI 2CO P

Weidmüller Interface GmbH & Co. KG

Klingenbergstraße 26
D-32758 Detmold
Germany

www.weidmueller.com

Technical data

| | | | |
|-------------------|------|--|--------------------|
| Protection degree | IP20 | Impulse withstand voltage at neighbouring contacts | 4.8 kV (1.2/50 µs) |
|-------------------|------|--|--------------------|

Further details of approvals / standards

| | |
|-------------------------|---------|
| Certificate No. (cURus) | E312083 |
|-------------------------|---------|

Connection data

| | | | |
|---|---------------------|---|----------------------|
| Wire connection method | PUSH IN | Stripping length, rated connection | 10 mm |
| Clamping range, rated connection | 1.5 mm ² | Clamping range, min. | 0.14 mm ² |
| Clamping range, max. | 1.5 mm ² | Wire connection cross section AWG, min. | AWG 26 |
| Wire connection cross section AWG, max. | AWG 16 | Wire cross-section, solid, min. | 0.14 mm ² |
| Wire cross-section, solid, max. | 1.5 mm ² | Wire connection cross section, finely stranded, min. | 0.14 mm ² |
| Wire connection cross section, finely stranded, max. | 1.5 mm ² | Wire connection cross-section, finely stranded with wire-end ferrules DIN 46228/4, min. | 0.14 mm ² |
| Wire connection cross-section, finely stranded with wire-end ferrules DIN 46228/4, max. | 1 mm ² | Conductor cross-section, flexible, AEH (DIN 46228-1), min. | 0.14 mm ² |
| Conductor cross-section, flexible, AEH (DIN 46228-1), max. | 1.5 mm ² | Blade size | 0.4 x 2.5 mm |

Important note

| | |
|---------------------|---|
| Product information | Only connection A2 with the cross-connection SCM/SDI P CC (art. no. 7760056366) can be bridged on this socket. The protection module (RC filter) RIM 3 110/230VAC LED with order no. 7760056045 is not compatible with this socket. |
|---------------------|---|

Classifications

| | | | |
|-------------|-------------|-------------|-------------|
| ETIM 8.0 | EC001456 | ETIM 9.0 | EC001456 |
| ETIM 10.0 | EC001456 | ECLASS 14.0 | 27-37-16-03 |
| ECLASS 15.0 | 27-37-16-03 | | |

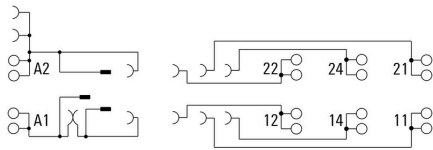
SDI 2CO P

Weidmüller Interface GmbH & Co. KG
 Klingenbergstraße 26
 D-32758 Detmold
 Germany

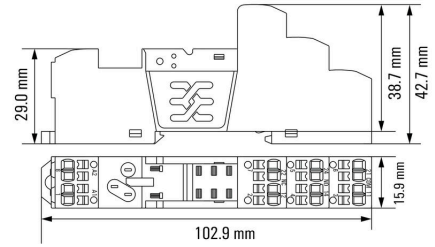
www.weidmueller.com

Drawings

Wiring diagram



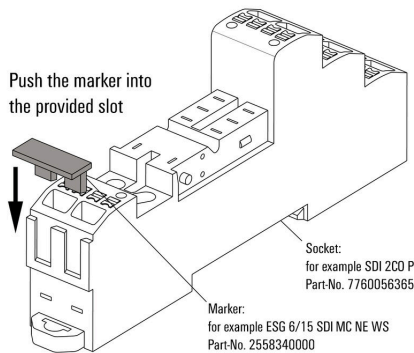
Dimensional drawing



Example of use

How to install marker

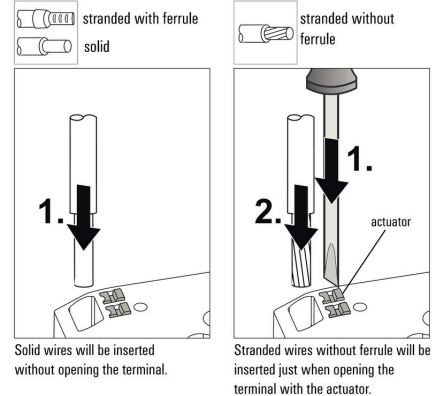
on PUSH IN connection sockets (one slot available)



How to install marker on PUSH IN connection sockets (one slot available)

Miscellaneous

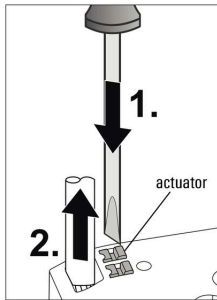
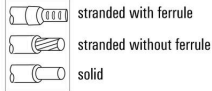
Insert flexible and solid cables



Drawings

Miscellaneous

Removal of cables

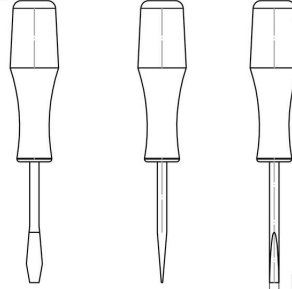


Wires will be disconnected just when opening the terminal with the actuator.

Miscellaneous

Recommended screwdriver

to push the actuator in PUSH IN



Ø 2,5mm
Screwdriver
SDS 0,4 x 2,5 x 75
9009030000

SDI 2CO P

Weidmüller Interface GmbH & Co. KG
 Klingenbergstraße 26
 D-32758 Detmold
 Germany

www.weidmueller.com

Accessories

Protection modules



Pluggable protective modules for the D-SERIES relay sockets, with optional protective functions.

- With free-wheeling diode or RC filter

General ordering data

| | | | |
|------------|----------------------------|--|--|
| Type | RIM 1 6/230VDC | Version | |
| Order No. | 7760056169 | D-SERIES, Free-wheeling diode, Rated control voltage: 6...230 V, Plug- | |
| GTIN (EAN) | 4032248967728 | in connection | |
| Qty. | 10 ST | | |

LED / free-wheel diode



Pluggable protective modules for the D-SERIES relay sockets, with optional protective functions.

- With green LED and free-wheeling diode

General ordering data

| | | | |
|------------|----------------------------|---|--|
| Type | RIM 2 6/24VDC | Version | |
| Order No. | 7760056015 | D-SERIES, LED module with freewheel diode, Rated control voltage: | |
| GTIN (EAN) | 4032248878116 | 6...24 V DC, Plug-in connection | |
| Qty. | 10 ST | | |
| Type | RIM 2 24/60VDC | Version | |
| Order No. | 7760056016 | D-SERIES, LED module with freewheel diode, Rated control voltage: | |
| GTIN (EAN) | 4032248878123 | 24...60 V DC, Plug-in connection | |
| Qty. | 10 ST | | |
| Type | RIM 2 110/230VDC | Version | |
| Order No. | 7760056017 | D-SERIES, LED module with freewheel diode, Rated control voltage: | |
| GTIN (EAN) | 4032248896615 | 110...230 V DC, Plug-in connection | |
| Qty. | 10 ST | | |

SDI 2CO P

Weidmüller Interface GmbH & Co. KG
 Klingenbergstraße 26
 D-32758 Detmold
 Germany

www.weidmueller.com

Accessories

LED



Pluggable protective modules for the D-SERIES relay sockets, with optional protective functions.

- With green LED

General ordering data

| | | |
|------------|----------------------------|---|
| Type | RIM 3 6/24VUC | Version |
| Order No. | 7940018457 | D-SERIES, LED module, Rated control voltage: 6...24 V UC, Plug-in connection |
| GTIN (EAN) | 4032248878192 | |
| Qty. | 10 ST | |
| Type | RIM 3 24/60VUC | Version |
| Order No. | 7760056018 | D-SERIES, LED module, Rated control voltage: 24...60 V UC, Plug-in connection |
| GTIN (EAN) | 4032248878130 | |
| Qty. | 10 ST | |
| Type | RIM 3 110/230VUC | Version |
| Order No. | 7940018455 | D-SERIES, LED module, Rated control voltage: 110...230 V UC, Plug-in connection |
| GTIN (EAN) | 4032248878185 | |
| Qty. | 10 ST | |

Protection modules



Pluggable protective modules for the D-SERIES relay sockets, with optional protective functions.

- With free-wheeling diode or RC filter

General ordering data

| | | |
|------------|----------------------------|--|
| Type | RIM 3 110/230VAC | Version |
| Order No. | 7760056014 | D-SERIES, RC filter, Rated control voltage: 110...230 V AC, Plug-in connection |
| GTIN (EAN) | 4032248878109 | |
| Qty. | 10 ST | |

SDI 2CO P

Weidmüller Interface GmbH & Co. KG
 Klingenbergstraße 26
 D-32758 Detmold
 Germany

www.weidmueller.com

Accessories

Cross-connection for socket with PUSH IN connection

Cross-connection for the sockets in the D-SERIES DRI.



General ordering data

| | | | |
|------------|----------------------------|---------------------------|--|
| Type | SCM/SDI P CC | Version | |
| Order No. | 7760056366 | D-SERIES, Cross-connector | |
| GTIN (EAN) | 6944 169773327 | | |
| Qty. | 10 ST | | |

Retaining clips

Retaining clip for D-SERIES DRI relays
 • Metal and plastic retaining clip



General ordering data

| | | | |
|------------|----------------------------|------------------------------|--|
| Type | SDI CLIP | Version | |
| Order No. | 7760056352 | D-SERIES DRI, Retaining clip | |
| GTIN (EAN) | 6944 169739996 | | |
| Qty. | 10 ST | | |
| Type | SDI CLIP P | Version | |
| Order No. | 7760056389 | D-SERIES DRI, Retaining clip | |
| GTIN (EAN) | 6944 169787539 | | |
| Qty. | 10 ST | | |
| Type | SDI CLIP LM | Version | |
| Order No. | 7760056368 | D-SERIES DRI, Retaining clip | |
| GTIN (EAN) | 6944 169773341 | | |
| Qty. | 10 ST | | |
| Type | SDI CLIP HM | Version | |
| Order No. | 7760056390 | D-SERIES DRI, Retaining clip | |
| GTIN (EAN) | 6944 169787898 | | |
| Qty. | 10 ST | | |

SDI 2CO P

Weidmüller Interface GmbH & Co. KG

Klingenbergstraße 26

D-32758 Detmold

Germany

www.weidmueller.com

Accessories

Blank



ESG is the tried-and-tested marker in MultiCard format for use on many well-known electrical devices. The result is high-quality device marking with a high-contrast appearance.

Various types are available for devices from manufacturers like Siemens, ABB, Beckhoff etc.

Advantages at a glance:

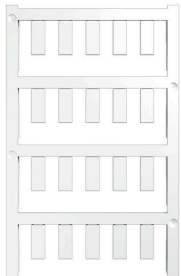
- Tags for universal usage, self-adhesive or clip-on tags, depending on type
- For aligned equipment, e.g. circuit breakers, we supply ESG markers for clipping onto tag rails
- Individual laser-quality printing according to specifications

For custom printing: Please send us a file of our labeling software M-Print PRO or M-Print PRO Online (without installation) for your labeling specifications.

General ordering data

| | | | |
|------------|----------------------------|--|--|
| Type | ESG 6/15 SDI MC NE WS | Version | |
| Order No. | 2558340000 | ESG, Device markers x 15 mm, PA 66, Colour: white, pluggable | |
| GTIN (EAN) | 4050118569056 | | |
| Qty. | 200 ST | | |

Custom printing



ESG is the tried-and-tested marker in MultiCard format for use on many well-known electrical devices. The result is high-quality device marking with a high-contrast appearance.

Various types are available for devices from manufacturers like Siemens, ABB, Beckhoff etc.

Advantages at a glance:

- Tags for universal usage, self-adhesive or clip-on tags, depending on type
- For aligned equipment, e.g. circuit breakers, we supply ESG markers for clipping onto tag rails
- Individual laser-quality printing according to specifications

For custom printing: Please send us a file of our labeling software M-Print PRO or M-Print PRO Online (without installation) for your labeling specifications.

General ordering data

| | | | |
|------------|----------------------------|--|--|
| Type | ESG 6/15 SDI MC SDR | Version | |
| Order No. | 2558310000 | ESG, Device markers x 15 mm, PA 66, Colour: To customer specification, pluggable | |
| GTIN (EAN) | 4050118569025 | | |
| Qty. | 40 ST | | |

SDI 2CO P

Weidmüller Interface GmbH & Co. KG
 Klingenbergstraße 26
 D-32758 Detmold
 Germany

www.weidmueller.com

Accessories

Slotted screwdriver



VDE insulated slot-head screwdriver, SDI DIN 7437, ISO 2380/2, drive output acc. to DIN 5264, ISO 2380/1. SoftFinish grip

General ordering data

| | | | |
|------------|----------------------------|--|--|
| Type | SDIS 0.4X2.5X75 | Version | |
| Order No. | 2749790000 | Screwdriver, Blade width (B): 2.5 mm, Blade length: 75 mm, Blade thickness (A): 0.4 mm | |
| GTIN (EAN) | 4050118896534 | | |
| Qty. | 1 ST | | |
| Type | SDS 0.4X2.5X75 | Version | |
| Order No. | 2749320000 | Screwdriver, Blade width (B): 2.5 mm, Blade length: 75 mm, Blade thickness (A): 0.4 mm | |
| GTIN (EAN) | 4050118895544 | | |
| Qty. | 1 ST | | |

ESG 6/15



Guaranteed long service life: ESG
 The multi-colour and multi-format labels have a strong adhesive layer to ensure the best possible adhesion to the underlying surface. Double laminated polyester makes the basic material very thin and yet extremely tear-resistant. Your benefits with MultiMark

- "Different materials for various requirements"
- Can be used with equipment from many manufacturers
- Device markers with a familiar design

General ordering data

| | | | |
|------------|----------------------------|---------------------------------------|--|
| Type | ESG 6/15 MM WS | Version | |
| Order No. | 2619940000 | ESG, Device markers, 6 x 15 mm, white | |
| GTIN (EAN) | 4050118626148 | | |
| Qty. | 3000 ST | | |