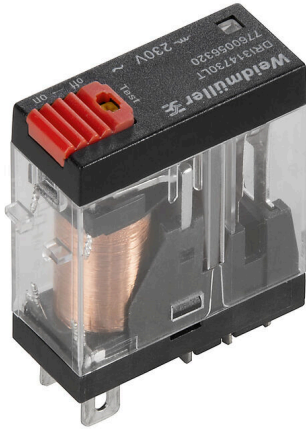


DRI314615LT

Weidmüller Interface GmbH & Co. KG
 Klingenbergstraße 26
 D-32758 Detmold
 Germany

www.weidmueller.com

Product image



Similar to illustration

Individual relays within the D-SERIES DRI

- 1 CO contact
- AC coils
- With integrated status LED and test button

General ordering data

| | |
|------------|---|
| Version | D-SERIES DRI, Relay, Number of contacts: 1, CO contact AgSnO, Rated control voltage: 115 V AC, Continuous current: 10 A, Flat blade connections (4.7 mm x 0.5 mm), Test button available: Yes |
| Order No. | 7760056319 |
| Type | DRI314615LT |
| GTIN (EAN) | 6944169740244 |
| Qty. | 20 items |

DRI314615LT

Weidmüller Interface GmbH & Co. KG

Klingenbergstraße 26

D-32758 Detmold

Germany

www.weidmueller.com

Technical data

Approvals

Approvals



ROHS Conform

UL File Number Search [UL Website](#)

Certificate No. (cURus) E312083

Dimensions and weights

| | | | |
|------------|---------|-----------------|-------------|
| Depth | 33.5 mm | Depth (inches) | 1.3189 inch |
| Height | 31 mm | Height (inches) | 1.2205 inch |
| Width | 13 mm | Width (inches) | 0.5118 inch |
| Net weight | 22.05 g | | |

Temperatures

| | | | |
|-----------------------|----------------|---------------------|--|
| Storage temperature | -40 °C...85 °C | Ambient temperature | -40 °C...55 °C |
| Operating temperature | | Humidity | 35...85 % rel. humidity, no condensation |

Environmental Product Compliance

| | |
|------------------------|-----------------------------|
| RoHS Compliance Status | Compliant without exemption |
| REACH SVHC | No SVHC above 0.1 wt% |

Rated data UL

| | |
|-------------------------|---------|
| Certificate No. (cURus) | E312083 |
|-------------------------|---------|

Control side

| | | | |
|-----------------------|----------|------------------|---------------|
| Rated control voltage | 115 V AC | Rated current AC | 9.3 mA |
| Power rating | 1.1 VA | Coil resistance | 6200 Ω ± 10 % |
| Status indicator | red LED | | |

Load side

| | | | |
|---|---------------------------------------|---|--|
| Rated switching voltage | 250 V AC | Continuous current | 10 A |
| Max. switching frequency at rated load | 0.1 Hz | Max. switching voltage, AC | 250 V |
| Max. switching voltage, DC | 250 V | AC switching capacity (resistive), max. | 2500 VA |
| DC switching capacity (resistive), max. | 240 W @ 24 V | Switch-on delay | ≤ 15 ms |
| Switch-off delay | ≤ 10 ms | Contact type | 1 CO contact (AgSnO) |
| Mechanical service life | 10 x 10 ⁶ switching cycles | Min. switching power | 10 mA @ 24 V, 10 mA @ 12 V, 100 mA @ 5 V |

General data

| | | | |
|--------------------------------------|---|-----------------|--|
| Test button available | Yes | | |
| Version of test button | Lockable test button, Momentary test button | | |
| Mechanical switch position indicator | No | | |
| Colour | Transparent | | |
| UL94 flammability rating component | Component | Relay cover | |
| | UL94 flammability rating | V-2 | |
| | Component | Relay baseplate | |
| | UL94 flammability rating | V-0 | |

DRI314615LT

Weidmüller Interface GmbH & Co. KG
 Klingenbergstraße 26
 D-32758 Detmold
 Germany

www.weidmueller.com

Technical data

| | |
|--------------------------|-------------------|
| Component | Relay test button |
| UL94 flammability rating | HB |

Insulation coordination

| | | | |
|---|-----------------|--|------------------|
| Rated voltage | 300 V | Pollution severity | 2 |
| Surge voltage category | III | Insulating material group | IIIa |
| Clearance and creepage distances for control side - load side | ≥ 4 mm | Dielectric strength for control side - load side | 5 kVeff / 1 min |
| Dielectric strength of open contact | 1 kVeff / 1 min | Impulse withstand voltage | 5 kV (1.2/50 µs) |
| Protection degree | IP20 | | |

Further details of approvals / standards

| | |
|-------------------------|---------|
| Certificate No. (cURus) | E312083 |
|-------------------------|---------|

Connection data

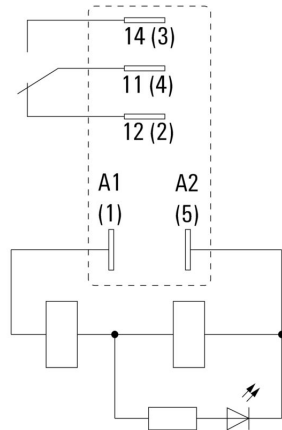
| | |
|------------------------|---|
| Wire connection method | Flat blade connections (4.7 mm x 0.5 mm) |
|------------------------|---|

Classifications

| | | | |
|-------------|-------------|-------------|-------------|
| ETIM 8.0 | EC001437 | ETIM 9.0 | EC001437 |
| ETIM 10.0 | EC001437 | ECLASS 14.0 | 27-37-16-01 |
| ECLASS 15.0 | 27-37-16-01 | | |

Drawings

Wiring diagram



View of Pins from below

Graph



DC load limit curve Resistive load

Graph



Electrical service life

Graph



AC operational voltage range

Dimensional drawing



Miscellaneous



Type codes

Accessories

Sockets



Relay sockets for the D-SERIES DRI relays

- 1 and 2 CO contacts
- Screw and PUSH IN connection
- Standard and low heights

General ordering data

| | | |
|------------|----------------------------|--|
| Type | SDI 1CO | Version |
| Order No. | 7760056350 | D-SERIES DRI, Relay socket, Number of contacts: 1, CO contact, |
| GTIN (EAN) | 6944 169739972 | Continuous current: 12 A, Screw connection |
| Qty. | 10 ST | |
| Type | SDI 1CO ECO | Version |
| Order No. | 7760056346 | D-SERIES DRI, Relay socket, Number of contacts: 1, CO contact, |
| GTIN (EAN) | 6944 169739934 | Continuous current: 12 A, Screw connection |
| Qty. | 10 ST | |
| Type | SDI 1CO F ECO | Version |
| Order No. | 7760056348 | D-SERIES DRI, Relay socket, Number of contacts: 1, CO contact, |
| GTIN (EAN) | 6944 169739958 | Continuous current: 12 A, Screw connection |
| Qty. | 10 ST | |
| Type | SDI 1CO P | Version |
| Order No. | 7760056364 | D-SERIES DRI, Relay socket, Number of contacts: 1, CO contact, |
| GTIN (EAN) | 6944 169772283 | Continuous current: 12 A, PUSH IN |
| Qty. | 20 ST | |

LED



Pluggable protective modules for the D-SERIES relay sockets, with optional protective functions.

- With green LED

General ordering data

| | | |
|------------|----------------------------|--|
| Type | RIM 3 110/230VUC | Version |
| Order No. | 7940018455 | D-SERIES, LED module, Rated control voltage: 110...230 V UC, Plug- |
| GTIN (EAN) | 4032248878185 | in connection |
| Qty. | 10 ST | |

DRI314615LT

Weidmüller Interface GmbH & Co. KG
 Klingenbergstraße 26
 D-32758 Detmold
 Germany

www.weidmueller.com

Accessories

Protection modules



Pluggable protective modules for the D-SERIES relay sockets, with optional protective functions.

- With free-wheeling diode or RC filter

General ordering data

| | | | |
|------------|----------------------------|--|--|
| Type | RIM 3 110/230VAC | Version | |
| Order No. | 7760056014 | D-SERIES, RC filter, Rated control voltage: 110...230 V AC, Plug-in connection | |
| GTIN (EAN) | 4032248878109 | | |
| Qty. | 10 ST | | |
| Type | RIM 3 110/230VAC LED | Version | |
| Order No. | 7760056045 | D-SERIES, RC filter, Rated control voltage: 110...230 V AC, Plug-in connection | |
| GTIN (EAN) | 4032248878147 | | |
| Qty. | 10 ST | | |

Retaining clips



Retaining clip for D-SERIES DRI relays

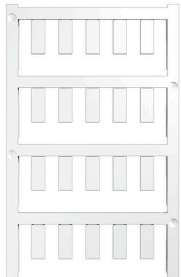
- Metal and plastic retaining clip

General ordering data

| | | | |
|------------|----------------------------|------------------------------|--|
| Type | SDI CLIP | Version | |
| Order No. | 7760056352 | D-SERIES DRI, Retaining clip | |
| GTIN (EAN) | 6944169739996 | | |
| Qty. | 10 ST | | |
| Type | SDI CLIP P | Version | |
| Order No. | 7760056389 | D-SERIES DRI, Retaining clip | |
| GTIN (EAN) | 6944169787539 | | |
| Qty. | 10 ST | | |
| Type | SDI CLIP HM | Version | |
| Order No. | 7760056390 | D-SERIES DRI, Retaining clip | |
| GTIN (EAN) | 6944169787898 | | |
| Qty. | 10 ST | | |

Accessories

Blank



ESG is the tried-and-tested marker in MultiCard format for use on many well-known electrical devices. The result is high-quality device marking with a high-contrast appearance.

Various types are available for devices from manufacturers like Siemens, ABB, Beckhoff etc.

Advantages at a glance:

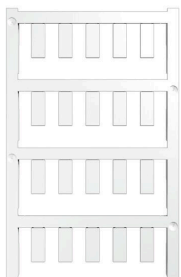
- Tags for universal usage, self-adhesive or clip-on tags, depending on type
- For aligned equipment, e.g. circuit breakers, we supply ESG markers for clipping onto tag rails
- Individual laser-quality printing according to specifications

For custom printing: Please send us a file of our labeling software M-Print PRO or M-Print PRO Online (without installation) for your labeling specifications.

General ordering data

| | | | |
|------------|----------------------------|--|--|
| Type | ESG 6/15 SDI MC NE WS | Version | |
| Order No. | 2558340000 | ESG, Device markers x 15 mm, PA 66, Colour: white, pluggable | |
| GTIN (EAN) | 4050118569056 | | |
| Qty. | 200 ST | | |

Custom printing



ESG is the tried-and-tested marker in MultiCard format for use on many well-known electrical devices. The result is high-quality device marking with a high-contrast appearance.

Various types are available for devices from manufacturers like Siemens, ABB, Beckhoff etc.

Advantages at a glance:

- Tags for universal usage, self-adhesive or clip-on tags, depending on type
- For aligned equipment, e.g. circuit breakers, we supply ESG markers for clipping onto tag rails
- Individual laser-quality printing according to specifications

For custom printing: Please send us a file of our labeling software M-Print PRO or M-Print PRO Online (without installation) for your labeling specifications.

General ordering data

| | | | |
|------------|----------------------------|--|--|
| Type | ESG 6/15 SDI MC SDR | Version | |
| Order No. | 2558310000 | ESG, Device markers x 15 mm, PA 66, Colour: To customer specification, pluggable | |
| GTIN (EAN) | 4050118569025 | | |
| Qty. | 40 ST | | |

Accessories

ESG 6/15



Guaranteed long service life: ESG

The multi-colour and multi-format labels have a strong adhesive layer to ensure the best possible adhesion to the underlying surface. Double laminated polyester makes the basic material very thin and yet extremely tear-resistant.

Your benefits with MultiMark

- “Different materials for various requirements”
- Can be used with equipment from many manufacturers
- Device markers with a familiar design

General ordering data

| | | | |
|------------|----------------------------|---------------------------------------|--|
| Type | ESG 6/15 MM WS | Version | |
| Order No. | 2619940000 | ESG, Device markers, 6 x 15 mm, white | |
| GTIN (EAN) | 4050118626148 | | |
| Qty. | 3000 ST | | |

Counterpart

Sockets



- Relay sockets for the D-SERIES DRI relays
- 1 and 2 CO contacts
 - Screw and PUSH IN connection
 - Standard and low heights

General ordering data

| | | |
|------------|----------------------------|--|
| Type | SDI 1CO | Version |
| Order No. | 7760056350 | D-SERIES DRI, Relay socket, Number of contacts: 1, CO contact, |
| GTIN (EAN) | 6944169739972 | Continuous current: 12 A, Screw connection |
| Qty. | 10 ST | |
| Type | SDI 1CO ECO | Version |
| Order No. | 7760056346 | D-SERIES DRI, Relay socket, Number of contacts: 1, CO contact, |
| GTIN (EAN) | 6944169739934 | Continuous current: 12 A, Screw connection |
| Qty. | 10 ST | |
| Type | SDI 1CO F ECO | Version |
| Order No. | 7760056348 | D-SERIES DRI, Relay socket, Number of contacts: 1, CO contact, |
| GTIN (EAN) | 6944169739958 | Continuous current: 12 A, Screw connection |
| Qty. | 10 ST | |
| Type | SDI 1CO P | Version |
| Order No. | 7760056364 | D-SERIES DRI, Relay socket, Number of contacts: 1, CO contact, |
| GTIN (EAN) | 6944169772283 | Continuous current: 12 A, PUSH IN |
| Qty. | 20 ST | |