

DRI314048LTD

Weidmüller Interface GmbH & Co. KG

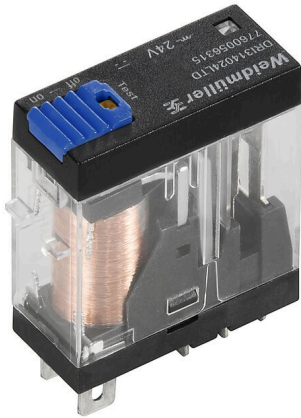
Klingenbergstraße 26

D-32758 Detmold

Germany

www.weidmueller.com

Product image



Similar to illustration

Individual relays within the D-SERIES DRI

- 1 CO contact
- DC coils
- With integrated status LED, free-wheeling diode and test button

General ordering data

| | |
|------------|--|
| Version | D-SERIES DRI, Relay, Number of contacts: 1, CO contact AgSnO, Rated control voltage: 48 V DC, Continuous current: 10 A, Flat blade connections (4.7 mm x 0.5 mm), Test button available: Yes |
| Order No. | 7760056316 |
| Type | DRI314048LTD |
| GTIN (EAN) | 6944169740213 |
| Qty. | 20 items |

DRI314048LTD

Weidmüller Interface GmbH & Co. KG

Klingenbergstraße 26

D-32758 Detmold

Germany

www.weidmueller.com

Technical data

Approvals

Approvals



ROHS Conform

UL File Number Search [UL Website](#)

Certificate No. (cURus) E312083

Dimensions and weights

| | | | |
|------------|---------|-----------------|-------------|
| Depth | 33.5 mm | Depth (inches) | 1.3189 inch |
| Height | 31 mm | Height (inches) | 1.2205 inch |
| Width | 13 mm | Width (inches) | 0.5118 inch |
| Net weight | 2.7 g | | |

Temperatures

| | | | |
|-----------------------|----------------|---------------------|--|
| Storage temperature | -40 °C...85 °C | Ambient temperature | -40 °C...55 °C |
| Operating temperature | | Humidity | 35...85 % rel. humidity, no condensation |

Environmental Product Compliance

RoHS Compliance Status Compliant without exemption

REACH SVHC No SVHC above 0.1 wt%

Rated data UL

Certificate No. (cURus) E312083

Control side

| | | | |
|-----------------------|-----------|--------------------|---------------------|
| Rated control voltage | 48 V DC | Rated current DC | 11,2 mA |
| Power rating | 530 mW | Coil resistance | 4300 Ω ± 10 % |
| Status indicator | Green LED | Protective circuit | Free-wheeling diode |

Load side

| | | | |
|---|---------------------------------------|---|--|
| Rated switching voltage | 250 V AC | Continuous current | 10 A |
| Max. switching frequency at rated load | 0.1 Hz | Max. switching voltage, AC | 250 V |
| Max. switching voltage, DC | 250 V | AC switching capacity (resistive), max. | 2500 VA |
| DC switching capacity (resistive), max. | 240 W @ 24 V | Switch-on delay | ≤ 15 ms |
| Switch-off delay | ≤ 10 ms | Contact type | 1 CO contact (AgSnO) |
| Mechanical service life | 10 x 10 ⁶ switching cycles | Min. switching power | 10 mA @ 24 V, 10 mA @ 12 V, 100 mA @ 5 V |

General data

| | | | |
|--------------------------------------|---|-----------------|--|
| Test button available | Yes | | |
| Version of test button | Lockable test button, Momentary test button | | |
| Mechanical switch position indicator | No | | |
| Colour | Transparent | | |
| UL94 flammability rating component | Component | Relay cover | |
| | UL94 flammability rating | V-2 | |
| | Component | Relay baseplate | |
| | UL94 flammability rating | V-0 | |

Technical data

| | |
|--------------------------|-------------------|
| Component | Relay test button |
| UL94 flammability rating | HB |

Insulation coordination

| | | | |
|---|-----------------|--|------------------|
| Rated voltage | 300 V | Pollution severity | 2 |
| Surge voltage category | III | Insulating material group | IIIa |
| Clearance and creepage distances for control side - load side | ≥ 4 mm | Dielectric strength for control side - load side | 5 kVeff / 1 min |
| Dielectric strength of open contact | 1 kVeff / 1 min | Impulse withstand voltage | 5 kV (1.2/50 µs) |
| Protection degree | IP20 | | |

Further details of approvals / standards

| | |
|-------------------------|---------|
| Certificate No. (cURus) | E312083 |
|-------------------------|---------|

Connection data

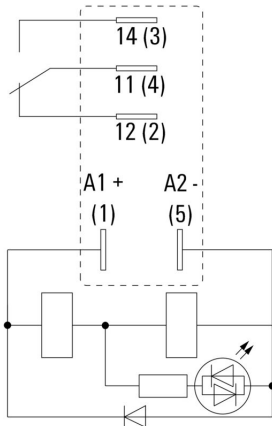
| | |
|------------------------|---|
| Wire connection method | Flat blade connections (4.7 mm x 0.5 mm) |
|------------------------|---|

Classifications

| | | | |
|-------------|-------------|-------------|-------------|
| ETIM 8.0 | EC001437 | ETIM 9.0 | EC001437 |
| ETIM 10.0 | EC001437 | ECLASS 14.0 | 27-37-16-01 |
| ECLASS 15.0 | 27-37-16-01 | | |

Drawings

Wiring diagram



View of Pins from below

Graph



DC load limit curve Resistive load

Graph



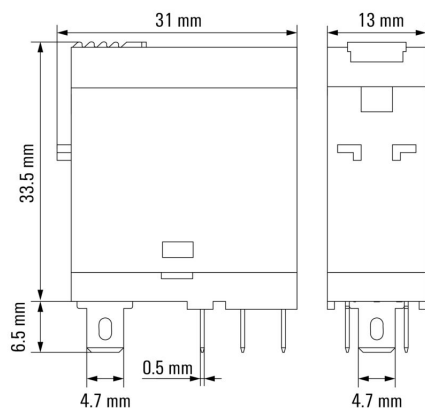
Electrical service life

Graph



DC operational voltage range

Dimensional drawing



Miscellaneous



Type codes