

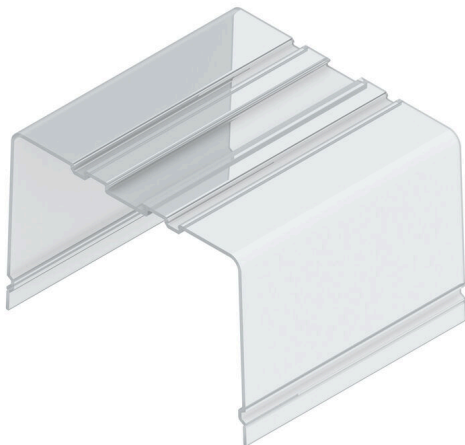
**ADP 11****Weidmüller Interface GmbH & Co. KG**

Klingenbergstraße 26

D-32758 Detmold

Germany

www.weidmueller.com



The RS 100 Profi offers you a flexible solution for your mounting needs, as both DIN rail mounting and wall mounting are possible. This versatility facilitates integration into different environments and applications. The housing can be used for the Eurocard PCB standard. The profile can be cut to size so that you can adapt it precisely to your specific requirements. For particularly heavy components, additional locking feet can be used to improve stability and thus increase the safety of your installation.

Another practical feature is the option of using a cover profile to protect large components.

**General ordering data**

Version	Cover profile, RS 100 Transparent, Cover profile high height, Width: 2000 mm
Order No.	<a href="#">4169330000</a>
Type	ADP 11
GTIN (EAN)	4008190229030
Qty.	2 M

## ADP 11

**Weidmüller Interface GmbH & Co. KG**  
 Klingenbergstraße 26  
 D-32758 Detmold  
 Germany

www.weidmueller.com

## Technical data

### Approvals

ROHS	Conform
------	---------

### Dimensions and weights

Depth	74.5 mm	Depth (inches)	2.9331 inch
Height	113 mm	Height (inches)	4.4488 inch
Width	2000 mm	Width (inches)	78.74 inch
Length	0 mm	Net weight	557.5 g

### Environmental Product Compliance

RoHS Compliance Status	Compliant without exemption
REACH SVHC	No SVHC above 0.1 wt%

### Material data

UL 94 flammability rating	V-0	Insulating material	PVC
Surface finish	untreated	Basic material	PVC

### General data

Colour	Transparent	Protection degree	IP20 in installed state
Mounting rail	TS 32	Colour chart (similar)	-

### Important note

Product information

3 heights are available for the cover profile and the end plates:  
 TS mounting without cover: TS 32 = 45 mm, TS35x7.5 = 40.5 mm  
 TS mounting with low cover: TS 32 = 89 mm, TS 35x7.5 = 84.5 mm  
 TS mounting with high cover: TS 32 = 121 mm, TS 35x7.5 = 116.5 mm  
 Direct mounting, without/low/high cover: 24 / 69 / 99 mm  
 Dimensions of the PCB  
 Thickness: 1.6 (±0.2) mm, width: 100 (+0.5) mm  
 Dimension of the RS section = length of the printed circuit board - 4.5 mm  
 Dimension of ADP section = PCB length - 1 mm  
 Example:  
 PCB length 160 mm, RS = 155.5 mm, ADP = 159 mm"

### Classifications

ETIM 8.0	EC002848	ETIM 9.0	EC002779
ETIM 10.0	EC002779	ECLASS 14.0	27-19-06-03
ECLASS 15.0	27-19-06-03		

ADP 11

Weidmüller Interface GmbH & Co. KG  
Klingenbergstraße 26  
D-32758 Detmold  
Germany

Drawings

[www.weidmueller.com](http://www.weidmueller.com)

