

SSS RELAIS 5V/24V 2ADC

Weidmüller Interface GmbH & Co. KG
Klingenbergstraße 26
D-32758 Detmold
Germany

www.weidmueller.com



Similar to illustration

Individual relays for TERMSERIES

- Solid-state relays
- Different output versions

General ordering data

Version	TERMSERIES, Solid-state relay, Rated control voltage: 2.5 V DC...5 V DC...6 V DC , Rated switching voltage: 3...33 V DC, Continuous current: 2 A, Plug-in connection
Order No.	4064310000
Type	SSS RELAIS 5V/24V 2ADC
GTIN (EAN)	4032248365524
Qty.	1 items

SSS RELAIS 5V/24V 2ADC

Weidmüller Interface GmbH & Co. KG
 Klingenbergstraße 26
 D-32758 Detmold
 Germany

www.weidmueller.com

Technical data

Approvals

ROHS	Conform
------	---------

Dimensions and weights

Depth	15 mm	Depth (inches)	0.5906 inch
Height	28 mm	Height (inches)	1.1024 inch
Width	5 mm	Width (inches)	0.1968 inch
Net weight	2.05 g		

Temperatures

Storage temperature	-40 °C...70 °C	Ambient temperature	-20 °C...60 °C
Operating temperature		Humidity	40 °C / 93 % rel. humidity, no condensation

Probability of failure

MTTF	1118 a
------	--------

Environmental Product Compliance

RoHS Compliance Status	Compliant
REACH SVHC	No SVHC above 0.1 wt%

Control side

Rated control voltage	2.5 V DC...5 V DC...6 V DC	Rated control voltage (control input)	2.5 V DC...5 V DC...6 V DC
Nominal control current	9 mA DC (±10%)	Power rating	45 mW
Status indicator	No		

Load side

Rated switching voltage	3...33 V DC	Continuous current	2 A
Rated switching current	2 A DC	Inrush current	15 A / 10 ms
Switch-on delay	<55 µs	Switch-off delay	<600 µs
Voltage drop at max. load	≤ 120 mV	Leakage current	<10 µA
Min. switching current	5 mA	Short-circuit-proof	No
Protective circuit, load side	Free-wheeling diode	Contact type	1 NO contact (MOS-FET)

General data

Colour	black
--------	-------

Insulation coordination

Clearance and creepage distances for control side - load side	≥ 5.5 mm	Dielectric strength for control side - load side	2.5 kVeff
---	----------	--	-----------

Connection data

Wire connection method	Plug-in connection
------------------------	--------------------

SSS RELAIS 5V/24V 2ADC

Weidmüller Interface GmbH & Co. KG
Klingenbergstraße 26
D-32758 Detmold
Germany

www.weidmueller.com

Technical data

Classifications

ETIM 8.0	EC001504	ETIM 9.0	EC001504
ETIM 10.0	EC001504	ECLASS 14.0	27-37-16-04
ECLASS 15.0	27-37-16-04		

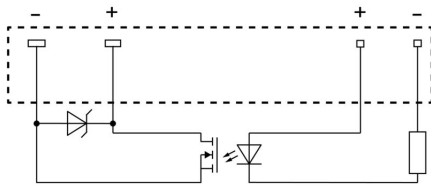
SSS RELAIS 5V/24V 2ADC

Weidmüller Interface GmbH & Co. KG
Klingenbergstraße 26
D-32758 Detmold
Germany

www.weidmueller.com

Drawings

Wiring diagram



View of pins from below

Dimensional drawing



SSS RELAIS 5V/24V 2ADC

Weidmüller Interface GmbH & Co. KG
 Klingenbergstraße 26
 D-32758 Detmold
 Germany

www.weidmueller.com

Counterpart

Screw connection



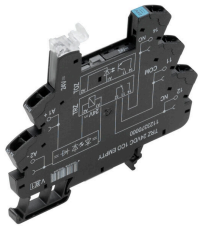
TERMSERIES empty sockets with:

- 1 CO contact
- Unique multi-voltage input from 24 to 230 V UC
- Input voltages with coloured marking: DC: blue, UC: white
- Due to high-quality design and no sharp edges no risk of injuries during installation
- Partition plates for optical separation and reinforcement of insulation

General ordering data

Type	TRS 5VDC 1CO EMPTY	Version	
Order No.	1123220000	TERMSERIES, Relay socket, Number of contacts: 1, CO contact, Rated control voltage: 5 V DC \pm 20 %, Continuous current: 10 A, Screw connection	
GTIN (EAN)	4032248905379		
Qty.	10 ST		

Tension clamp connection



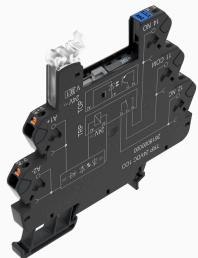
TERMSERIES empty sockets with:

- 1 CO contact
- Unique multi-voltage input from 24 to 230 V UC
- Input voltages with coloured marking: DC: blue, UC: white
- Due to high-quality design and no sharp edges no risk of injuries during installation
- Partition plates for optical separation and reinforcement of insulation

General ordering data

Type	TRZ 5VDC 1CO EMPTY	Version	
Order No.	1123340000	TERMSERIES, Relay socket, Number of contacts: 1, CO contact, Rated control voltage: 5 V DC \pm 20 %, Continuous current: 10 A, Tension-clamp connection	
GTIN (EAN)	4032248905645		
Qty.	10 ST		

PUSH IN connection



TERMSERIES empty sockets with:

- 1 CO contact
- Unique multi-voltage input from 24 to 230 V UC
- Input voltages with coloured marking: DC: blue, UC: white
- Due to high-quality design and no sharp edges no risk of injuries during installation
- Partition plates for optical separation and reinforcement of insulation

General ordering data

Type	TRP 5VDC 1CO EMPTY	Version	
Order No.	2614870000	TERMSERIES, Relay socket, Number of contacts: 1, CO contact, Rated control voltage: 5 V DC \pm 20 %, Continuous current: 10 A, PUSH IN	
GTIN (EAN)	4050118671032		
Qty.	10 ST		