

SSS RELAIS 60V/24V 0,1ADC

Weidmüller Interface GmbH & Co. KG
 Klingenbergstraße 26
 D-32758 Detmold
 Germany

www.weidmueller.com



Similar to illustration

Individual relays for TERMSERIES

- Solid-state relays
- Different output versions

General ordering data

Version	TERMSERIES, Solid-state relay, Rated control voltage: 52 V DC...60 V DC...72 V DC , Rated switching voltage: 0...48 V DC, Continuous current: 0.1 A, Plug-in connection
Order No.	4061230000
Type	SSS RELAIS 60V/24V 0,1ADC
GTIN (EAN)	40322484 15 106
Qty.	20 items

SSS RELAIS 60V/24V 0,1ADC

Weidmüller Interface GmbH & Co. KG
Klingenbergstraße 26
D-32758 Detmold
Germany

www.weidmueller.com

Technical data

Approvals

ROHS	Conform
------	---------

Dimensions and weights

Depth	15 mm	Depth (inches)	0.5906 inch
Height	28 mm	Height (inches)	1.1024 inch
Width	5 mm	Width (inches)	0.1968 inch
Net weight	3.42 g		

Temperatures

Storage temperature	-40 °C...70 °C	Ambient temperature	-20 °C...60 °C
Operating temperature		Humidity	40 °C / 93 % rel. humidity, no condensation

Probability of failure

MTTF	3989 a
------	--------

Environmental Product Compliance

RoHS Compliance Status	Compliant
REACH SVHC	No SVHC above 0.1 wt%

Control side

Rated control voltage	52 V DC...60 V DC...72 V DC	Rated control voltage (control input)	52 V DC...60 V DC...72 V DC
Nominal control current	2.8 mA DC (±10%)	Power rating	180 mW
Status indicator	No		

Load side

Rated switching voltage	0...48 V DC	Continuous current	0.1 A
Rated switching current	100 mA/ DC	Switch-on delay	<35 µs
Switch-off delay	<355 µs	Voltage drop at max. load	≤ 1 V
Leakage current	<10 µA	Min. switching current	500 µA
Short-circuit-proof	No	Protective circuit, load side	Free-wheeling diode
Contact type	1 NO contact (Bipolar transistor)		

General data

Colour	black
--------	-------

Insulation coordination

Clearance and creepage distances for control side - load side	≥ 5.5 mm	Dielectric strength for control side - load side	2.5 kVeff
---	----------	--	-----------

Connection data

Wire connection method	Plug-in connection
------------------------	--------------------

SSS RELAIS 60V/24V 0,1ADC

Weidmüller Interface GmbH & Co. KG
Klingenbergstraße 26
D-32758 Detmold
Germany

www.weidmueller.com

Technical data

Classifications

ETIM 8.0	EC001504	ETIM 9.0	EC001504
ETIM 10.0	EC001504	ECLASS 14.0	27-37-16-04
ECLASS 15.0	27-37-16-04		

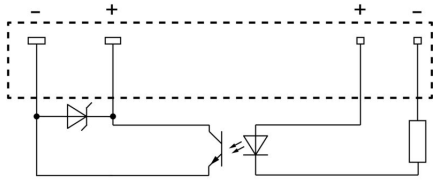
SSS RELAIS 60V/24V 0,1ADC

Weidmüller Interface GmbH & Co. KG
Klingenbergstraße 26
D-32758 Detmold
Germany

www.weidmueller.com

Drawings

Wiring diagram



View of pins from below

Dimensional drawing



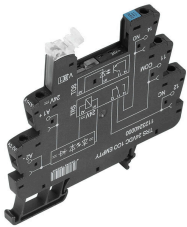
SSS RELAIS 60V/24V 0,1ADC

Weidmüller Interface GmbH & Co. KG
 Klingenbergstraße 26
 D-32758 Detmold
 Germany

Counterpart

www.weidmueller.com

Screw connection



TERMSERIES empty sockets with:

- 1 CO contact
- Unique multi-voltage input from 24 to 230 V UC
- Input voltages with coloured marking: DC: blue, UC: white
- Due to high-quality design and no sharp edges no risk of injuries during installation
- Partition plates for optical separation and reinforcement of insulation

General ordering data

Type	TRS 60VUC 1CO EMPTY	Version
Order No.	1123280000	TERMSERIES, Relay socket, Number of contacts: 1, CO contact, Rated control voltage: 60 V UC $\pm 10\%$, Continuous current: 10 A, Screw connection
GTIN (EAN)	4032248905270	
Qty.	10 ST	
Type	TRS 120VUC 1CO EMPTY	Version
Order No.	1123290000	TERMSERIES, Relay socket, Number of contacts: 1, CO contact, Rated control voltage: 120 V UC $\pm 10\%$, Continuous current: 10 A, Screw connection
GTIN (EAN)	4032248905461	
Qty.	10 ST	
Type	TRS 230VUC 1CO EMPTY	Version
Order No.	1123300000	TERMSERIES, Relay socket, Number of contacts: 1, CO contact, Rated control voltage: 230 V UC $\pm 10\%$, Continuous current: 10 A, Screw connection
GTIN (EAN)	4032248905515	
Qty.	10 ST	
Type	TRS 120VAC RC 1CO EMPTY	Version
Order No.	1123310000	TERMSERIES, Relay socket, Number of contacts: 1, CO contact, Rated control voltage: 120 V AC $\pm 10\%$, Continuous current: 10 A, Screw connection
GTIN (EAN)	4032248905317	
Qty.	10 ST	
Type	TRS 230VAC RC 1CO EMPTY	Version
Order No.	1123320000	TERMSERIES, Relay socket, Number of contacts: 1, CO contact, Rated control voltage: 230 V AC $\pm 10\%$, Continuous current: 10 A, Screw connection
GTIN (EAN)	4032248905522	
Qty.	10 ST	

Tension clamp connection



TERMSERIES empty sockets with:

- 1 UC contact
- Unique multi-voltage input from 24 to 230 V UC
- Input voltages with coloured marking: DC: blue, UC: white
- Due to high-quality design and no sharp edges no risk of injuries during installation
- Partition plates for optical separation and reinforcement of insulation

General ordering data

Type	TRZ 60VUC 1CO EMPTY	Version
Order No.	1123400000	TERMSERIES, Relay socket, Number of contacts: 1, CO contact, Rated control voltage: 60 V UC $\pm 10\%$, Continuous current: 10 A, Tension-clamp connection
GTIN (EAN)	4032248905546	
Qty.	10 ST	

SSS RELAIS 60V/24V 0,1ADC

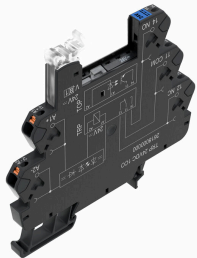
Weidmüller Interface GmbH & Co. KG
 Klingenbergstraße 26
 D-32758 Detmold
 Germany

www.weidmueller.com

Counterpart

Type	TRZ 120VUC 1CO EMPTY	Version
Order No.	1123410000	TERMSERIES, Relay socket, Number of contacts: 1, CO contact, Rated
GTIN (EAN)	4032248905690	control voltage: 120 V UC $\pm 10\%$, Continuous current: 10 A, Tension-
Qty.	10 ST	clamp connection
Type	TRZ 230VUC 1CO EMPTY	Version
Order No.	1123420000	TERMSERIES, Relay socket, Number of contacts: 1, CO contact, Rated
GTIN (EAN)	4032248905683	control voltage: 230 V UC $\pm 10\%$, Continuous current: 10 A, Tension-
Qty.	10 ST	clamp connection
Type	TRZ 120VAC RC 1CO EMPTY	Version
Order No.	1123430000	TERMSERIES, Relay socket, Number of contacts: 1, CO contact, Rated
GTIN (EAN)	4032248905188	control voltage: 120 V AC $\pm 10\%$, Continuous current: 10 A, Tension-
Qty.	10 ST	clamp connection
Type	TRZ 230VAC RC 1CO EMPTY	Version
Order No.	1123440000	TERMSERIES, Relay socket, Number of contacts: 1, CO contact, Rated
GTIN (EAN)	4032248905171	control voltage: 230 V AC $\pm 10\%$, Continuous current: 10 A, Tension-
Qty.	10 ST	clamp connection

PUSH IN connection



TERMSERIES empty sockets with:

- 1 CO contact
- Unique multi-voltage input from 24 to 230 V UC
- Input voltages with coloured marking: DC: blue, UC: white
- Due to high-quality design and no sharp edges no risk of injuries during installation
- Partition plates for optical separation and reinforcement of insulation

General ordering data

Type	TRP 60VUC 1CO EMPTY	Version
Order No.	2618900000	TERMSERIES, Relay socket, Number of contacts: 1, CO contact, Rated
GTIN (EAN)	4050118669930	control voltage: 60 V UC $\pm 10\%$, Continuous current: 10 A, PUSH IN
Qty.	10 ST	
Type	TRP 120VAC RC 1CO EMPTY	Version
Order No.	2618880000	TERMSERIES, Relay socket, Number of contacts: 1, CO contact, Rated
GTIN (EAN)	4050118669954	control voltage: 120 V AC $\pm 10\%$, Continuous current: 10 A, PUSH IN
Qty.	10 ST	
Type	TRP 120VUC 1CO EMPTY	Version
Order No.	2618950000	TERMSERIES, Relay socket, Number of contacts: 1, CO contact, Rated
GTIN (EAN)	4050118667585	control voltage: 120 V UC $\pm 10\%$, Continuous current: 10 A, PUSH IN
Qty.	10 ST	
Type	TRP 230VAC RC 1CO EMPTY	Version
Order No.	2618890000	TERMSERIES, Relay socket, Number of contacts: 1, CO contact, Rated
GTIN (EAN)	4050118669947	control voltage: 230 V AC $\pm 10\%$, Continuous current: 10 A, PUSH IN
Qty.	10 ST	
Type	TRP 230VUC 1CO EMPTY	Version
Order No.	2618960000	TERMSERIES, Relay socket, Number of contacts: 1, CO contact, Rated
GTIN (EAN)	4050118667578	control voltage: 230 V UC $\pm 10\%$, Continuous current: 10 A, PUSH IN
Qty.	10 ST	