

## SSS RELAIS 60V/24V 2ADC

**Weidmüller Interface GmbH & Co. KG**  
 Klingenbergstraße 26  
 D-32758 Detmold  
 Germany

www.weidmueller.com



Similar to illustration

Individual relays for TERMSERIES

- Solid-state relays
- Different output versions

### General ordering data

Version	TERMSERIES, Solid-state relay, Rated control voltage: 52 V DC...60 V DC...72 V DC , Rated switching voltage: 3...33 V DC, Continuous current: 2 A, Plug-in connection
Order No.	<a href="#">406120000</a>
Type	SSS RELAIS 60V/24V 2ADC
GTIN (EAN)	40322484 15090
Qty.	20 items

## SSS RELAIS 60V/24V 2ADC

**Weidmüller Interface GmbH & Co. KG**  
 Klingenbergstraße 26  
 D-32758 Detmold  
 Germany

www.weidmueller.com

## Technical data

## Approvals

ROHS	Conform
------	---------

## Dimensions and weights

Depth	15 mm	Depth (inches)	0.5906 inch
Height	28 mm	Height (inches)	1.1024 inch
Width	5 mm	Width (inches)	0.1968 inch
Net weight	20 g		

## Temperatures

Storage temperature	-40 °C...70 °C	Ambient temperature	-20 °C...60 °C
Operating temperature		Humidity	40 °C / 93 % rel. humidity, no condensation

## Probability of failure

MTTF	1116 a
------	--------

## Environmental Product Compliance

RoHS Compliance Status	Compliant
REACH SVHC	No SVHC above 0.1 wt%

## Control side

Rated control voltage	52 V DC...60 V DC...72 V DC	Rated control voltage (control input)	52 V DC...60 V DC...72 V DC
Nominal control current	3 mA DC (± 15 %)	Power rating	180 mW
Status indicator	No		

## Load side

Rated switching voltage	3...33 V DC	Continuous current	2 A
Rated switching current	2 A DC	Inrush current	15 A / 10 ms
Switch-on delay	<55 µs	Switch-off delay	<600 µs
Voltage drop at max. load	≤ 120 mV	Leakage current	<10 µA
Min. switching current	5 mA	Short-circuit-proof	No
Protective circuit, load side	Free-wheeling diode	Contact type	1 NO contact (MOS-FET)

## General data

Colour	black
--------	-------

## Insulation coordination

Clearance and creepage distances for control side - load side	≥ 5.5 mm	Dielectric strength for control side - load side	2.5 kVeff
---	----------	--	-----------

## Connection data

Wire connection method	Plug-in connection
------------------------	--------------------

**SSS RELAIS 60V/24V 2ADC**

**Weidmüller Interface GmbH & Co. KG**  
Klingenbergstraße 26  
D-32758 Detmold  
Germany

[www.weidmueller.com](http://www.weidmueller.com)

**Technical data**

**Classifications**

ETIM 8.0	EC001504	ETIM 9.0	EC001504
ETIM 10.0	EC001504	ECLASS 14.0	27-37-16-04
ECLASS 15.0	27-37-16-04		

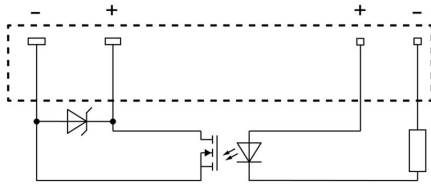
**SSS RELAIS 60V/24V 2ADC**

**Weidmüller Interface GmbH & Co. KG**  
Klingenbergstraße 26  
D-32758 Detmold  
Germany

[www.weidmueller.com](http://www.weidmueller.com)

**Drawings**

**Wiring diagram**



View of pins from below

**Dimensional drawing**

