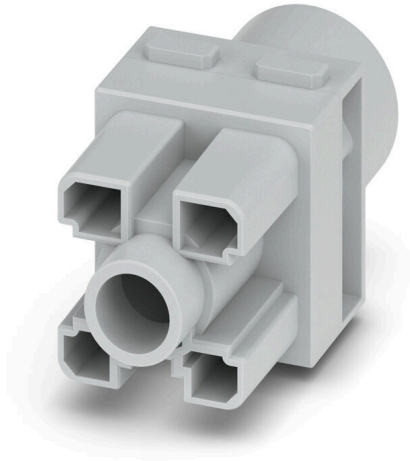


HDC MHP 300 FC

Weidmüller Interface GmbH & Co. KG
Klingenbergstraße 26
D-32758 Detmold
Germany

www.weidmueller.com

**Flexible**

The four module sizes make for individual plug solutions that save a huge amount of space. The smaller pitch translates into an optimised design too.

General ordering data

Version	Module, 1000 V, 300 A, Number of poles: 1, Crimp connection, Female, Required plug-in slots: 1.5
Order No.	3187680000
Type	HDC MHP 300 FC
GTIN (EAN)	4099987958776
Qty.	1 items

HDC MHP 300 FC

Weidmüller Interface GmbH & Co. KG
Klingenbergstraße 26
D-32758 Detmold
Germany

www.weidmueller.com

Technical data

Approvals

ROHS	Conform
------	---------

Dimensions and weights

Height	61.9 mm	Height (inches)	2.437 inch
Width	34 mm	Width (inches)	1.3386 inch
Length	29.5 mm	Length (inches)	1.1614 inch
Net weight	18 g		

Temperatures

Limit temperature	-40 °C ... 125 °C
-------------------	-------------------

Environmental Product Compliance

RoHS Compliance Status	Compliant without exemption
REACH SVHC	No SVHC above 0.1 wt%

General data

Number of poles	1	Number of potentials	1
UL 94 flammability rating	V-0	Insulation resistance	10 ¹² Ω
Plugging cycles	≥ 500	Type	Female
Surge voltage category	III	Pollution severity	3
Basic material	Polycarbonate, glass fibre reinforced	Series	ModuPlug
Rated voltage (DIN EN 61984)	1000 V	Rated voltage according to UL/CSA	600 V
Rated impulse voltage (DIN EN 61984)	8 kV	Rated current (DIN EN 61984)	300 A
Required plug-in slots	1.5		

PE connection data

Connection type PE	Screw connection via module frame
--------------------	-----------------------------------

Version

Wire connection cross section AWG, max.	AWG 4/0	Stripping length, rated connection	19 mm
Type of connection	Crimp connection	Wire connection cross section AWG, min.	AWG 3/0
Conductor cross-section, max.	120 mm ²	Conductor cross-section, min.	95 mm ²

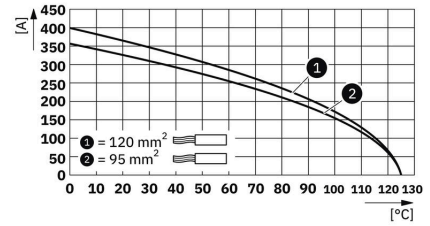
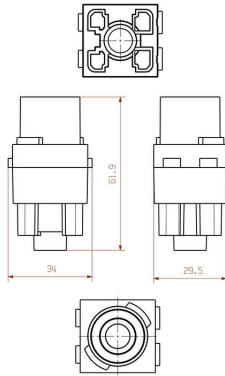
Power contact

Tightening torque, max. according to the conductor cross-section	Conductor cross-section, min.	120 mm ²
	Conductor cross-section, max.	95 mm ²

Classifications

ETIM 8.0	EC000438	ETIM 9.0	EC000438
ETIM 10.0	EC000438	ECLASS 14.0	27-44-02-17
ECLASS 15.0	27-44-02-17		

Drawings



HDC MHP 300 FC

Weidmüller Interface GmbH & Co. KG
Klingenbergstraße 26
D-32758 Detmold
Germany

www.weidmueller.com

Accessories**300 A crimp contacts**

Crimps provide a electrical and mechanical connection between wire and contact that is both secure and reliable. The optimal crimp connection is gas-tight and corrosion-resistant.

General ordering data

Type	HDC MHP300 F 95	Version	
Order No.	3187710000	Female, silver, 95 - 95 mm ²	
GTIN (EAN)	4099987958837		
Qty.	1 ST		
Type	HDC MHP300 F 120	Version	
Order No.	3187720000	Female, silver, 120 - 120 mm ²	
GTIN (EAN)	4099987958851		
Qty.	1 ST		