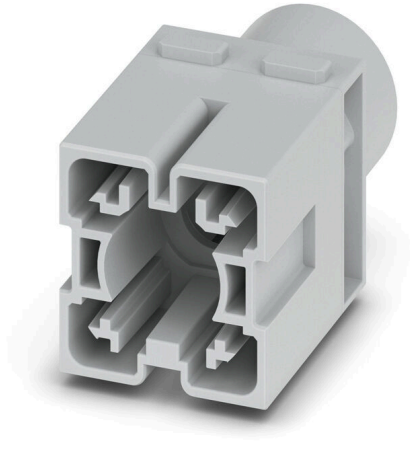


HDC MHP 300 MC

Weidmüller Interface GmbH & Co. KG
Klingenbergstraße 26
D-32758 Detmold
Germany

www.weidmueller.com

**Flexible**

The four module sizes make for individual plug solutions that save a huge amount of space. The smaller pitch translates into an optimised design too.

General ordering data

Version	Module, 1000 V, Number of poles: 0, Crimp connection, Male, Required plug-in slots: 1.5
Order No.	3187670000
Type	HDC MHP 300 MC
GTIN (EAN)	4099987958769
Qty.	1 items

HDC MHP 300 MC

Weidmüller Interface GmbH & Co. KG

Klingenbergstraße 26

D-32758 Detmold

Germany

www.weidmueller.com

Technical data

Approvals

ROHS	Conform
------	---------

Dimensions and weights

Depth	34 mm	Depth (inches)	1.3386 inch
Height	56.2 mm	Height (inches)	2.2126 inch
Width	34 mm	Width (inches)	1.3386 inch
Length	29.5 mm	Length (inches)	1.1614 inch
Net weight	19 g		

Temperatures

Limit temperature	-40 °C ... 125 °C
-------------------	-------------------

Environmental Product Compliance

RoHS Compliance Status	Compliant without exemption
REACH SVHC	No SVHC above 0.1 wt%

General data

Number of poles	0	UL 94 flammability rating	V-0
Insulation resistance	10 ¹² Ω	Plugging cycles	≥ 500
Type	Male	Surge voltage category	III
Pollution severity	3	Basic material	Polycarbonate, glass fibre reinforced
Series	ModuPlug	Rated voltage (DIN EN 61984)	1000 V
Rated voltage according to UL/CSA	600 V	Rated impulse voltage (DIN EN 61984)	8 kV
Required plug-in slots	1.5		

PE connection data

Connection type PE	Screw connection via module frame
--------------------	-----------------------------------

Version

Wire connection cross section AWG, max.	AWG 4/0	Stripping length, rated connection	19 mm
Type of connection	Crimp connection	Wire connection cross section AWG, min.	AWG 3/0
Conductor cross-section, max.	120 mm ²	Conductor cross-section, min.	95 mm ²

Power contact

Tightening torque, max. according to the conductor cross-section	Conductor cross-section, min.	95 mm ²
	Conductor cross-section, max.	120 mm ²
Stripping length according to the cable diameter	Cable diameter, min.	9.5 mm
	Cable diameter, max.	9.5 mm

Classifications

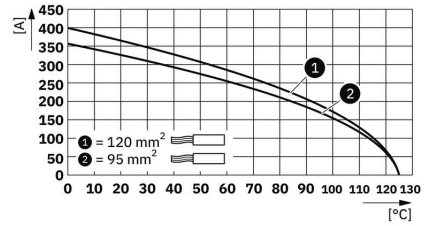
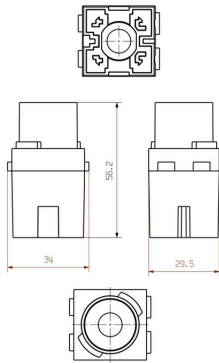
ETIM 8.0	EC000438	ETIM 9.0	EC000438
ETIM 10.0	EC000438	ECLASS 14.0	27-44-02-17
ECLASS 15.0	27-44-02-17		

HDC MHP 300 MC

Weidmüller Interface GmbH & Co. KG
Klingenbergstraße 26
D-32758 Detmold
Germany

Drawings

www.weidmueller.com



HDC MHP 300 MC

Weidmüller Interface GmbH & Co. KG
 Klingenbergstraße 26
 D-32758 Detmold
 Germany

www.weidmueller.com

Accessories

300 A crimp contacts



Crimps provide a electrical and mechanical connection between wire and contact that is both secure and reliable. The optimal crimp connection is gas-tight and corrosion-resistant.

General ordering data

Type	HDC MHP300 M 95	Version	
Order No.	3187690000	Male, silver, 95 - 95 mm ²	
GTIN (EAN)	4099987958783		
Qty.	1 ST		
Type	HDC MHP300 M 120	Version	
Order No.	3187700000	Male, silver, 120 - 120 mm ²	
GTIN (EAN)	4099987958806		
Qty.	1 ST		